



**MID-STATES
CORRIDOR**

APPENDIX W ENVIRONMENTAL JUSTICE ANALYSIS

Mid-States Corridor Tier 1 Environmental Impact Statement

Prepared for
Indiana Department of Transportation
Mid-States Corridor Regional Development Authority

FEBRUARY 24, 2022

UPDATED AUGUST 13, 2023

Prepared by
Mid-States Corridor Project Consultant





Table of Contents

Introduction	1
Methodology.....	2
Analysis	4
Environmental Justice Outreach Plan	66
Environmental Justice Action Plan.....	78

Tables

Table 1. Environmental Justice Summary Table	6
Table 2. EJ Analysis, Minority Populations Totals	10
Table 3. Breakdown by Race – Not Hispanic or Latino in Block Groups	24
Table 4. Breakdown by Race – Hispanic or Latino in Block Groups	37
Table 5. EJ Analysis Low-Income Populations Totals	50
Table 6. EJ Analysis, Minority Population Totals – Local Improvements.....	63
Table 7. EJ Analysis, Low-Income Population Totals – Local Improvements.....	65



INTRODUCTION

The following substantive changes have been made to this appendix since the Draft Environmental Impact Statement (DEIS) was published:

- During the Screening of Alternatives, preliminary Alternative R was evaluated before being removed from further consideration. Alternative R consists of upgrading US 231 from I-64 to I-69. Many comments on the DEIS requested further consideration of an upgrade of US 231 in place of the five alternatives presented in the DEIS. In response to these comments, this FEIS further evaluates the costs, impacts and benefits of Alternative R. See **Section 2.5.1** for details about Alternative R.
- Multiple comments were received from local officials in Loogootee and Martin County about the alignment of Alternative P in Martin County, particularly in the vicinity of Loogootee. The DEIS showed Alternative P with an alignment west of Loogootee. Portions of this alignment are in Daviess County. These comments requested modifications to Alternative P to bring it through or to the east of Loogootee.
- In response to these comments, three additional variations of Alternative P have been added in Martin County. All variations are within Section of Independent Utility (SIU) 4. See **Section 2.7** for a discussion of Tier 2 sections for all alternatives. Alternative P with these variations has been designated as Refined Preferred Alternative P (RPA P). It is evaluated separately from any alternative considered in the DEIS. A single variation of RPA P will be selected in Tier 2 studies for SIU 4. See Section 2.5.2 for details about the variations of RPA P near Loogootee.
- The two additional alternatives, RPA P and Alternative R, have been added to the analysis.
- Six additional census block groups are intersected by the new alternatives, as shown in **Table 1**.

The purpose of this appendix is to document and summarize information for block groups and low-income and minority populations for use in an environmental justice (EJ) analysis of the Mid-States Corridor Project alternatives in southwestern Indiana. The environmental justice analysis is part of the Tier 1 Environmental Impact Statement for the referenced project.

This appendix provides information regarding the identification and characterization of communities that meet the criteria for protection under Title VI of the 1964 Civil Rights Act (Title VI) and Executive Order 12898: Federal Actions to Address Environmental Justice in Minority Populations and Low-Income Populations, as well as efforts to engage these populations in the project development process for the Mid-States Corridor. A detailed Environmental Justice Outreach Plan has been developed and is included in this appendix. This appendix documents efforts to identify minority and low-income populations that could potentially be impacted by the Mid-States Corridor. This information supports the analysis in **Chapter 3.8, Title VI/Environmental Justice Impacts**.



METHODOLOGY

Under the Federal Highway Administration (FHWA) Order 6640.23A, the following populations must be considered in analyzing EJ impacts. Order 6640.23A defines low-income and minority as follows:

“**Minority**” means a person who is:

1. Black – a person having origins in any of the black racial groups of Africa.
2. Hispanic or Latino – a person of Mexican, Puerto Rican, Cuban, Central or South American, or other Spanish culture or origin, regardless of race.
3. Asian American – a person having origins in any of the original peoples of the Far East, Southeast Asia, or the Indian subcontinent.
4. American Indian and Alaskan Native – a person having origins in any of the original people of North America, South America (including Central America), and who maintains cultural identification through tribal affiliation or community recognition.
5. Native Hawaiian or Other Pacific Islander – a person having origins in any of the original peoples of Hawaii, Guam, Samoa, or other Pacific Islands.

Minority Population. Any readily identifiable groups of minority persons who live in geographic proximity, and if circumstances warrant, geographically dispersed/transient persons (such as migrant workers or Native Americans) who will be similarly affected by a proposed FHWA program, policy, or activity.

Low-Income. A person whose median household income is at or below the Department of Health and Human Services poverty guidelines.

Low-Income Population. Any readily identifiable group of low-income persons who live in geographic proximity, and if circumstances warrant, geographically dispersed/transient persons (such as migrant workers or Native Americans) who will be similarly affected by a proposed FHWA program, policy, or activity. (FHWA Order 6640.23A)

The purpose of this analysis is to identify the affected communities and communities of comparison for the Mid-States Corridor project. The following key terms are used in this analysis:

1. **Socioeconomic Study Area** is defined as all census tract block groups that are impacted by one of the Mid-States Corridor alternatives.
2. **Census Tract** is defined by the U.S. Census Bureau as, “small, relatively permanent statistical subdivisions of a county...the primary purpose of census tracts is to provide a stable set of geographic units for the presentation of statistical data,” (INDOT Environmental Justice in NEPA Documentation Process).
3. **Census Tract Block Group** (CBG) is defined by the U.S. Census Bureau as, “statistical divisions of census tracts, [and] are generally defined to contain between 600 and 3,000 people.” For the EJ analysis, block groups were used to identify the geographic limits of each potentially affected community (AC).
4. **Community of Comparison** (COC) is defined by INDOT EJ guidance as the reference community for the socioeconomic study area, which is typically a county, city or town, but may be based on



other locally or regionally important community contexts. This document details the analysis completed to determine the COC for the EJ analysis.

5. **Affected Community (AC)** is defined by INDOT EJ guidance as the community that overlaps the socioeconomic study area and is entirely contained within the COC. For the EJ analysis, the geographic boundaries of the block groups within the socioeconomic study area were used to define the geographic boundary of each, distinct affected community.
6. **Population of Concern** is defined by INDOT EJ guidance as a population within an AC and that “population is more than 50 percent minority or low-income or if the percentage of low-income or minority population in the AC is 25 percent higher than the percentage of low-income or minority population in the COC.”

Potential EJ impacts are found by identifying the minority populations and low-income populations that are in or near the project area, calculating their percentages in the area relative to a reference population, and determining whether there may be adverse impacts to them. The reference community is the community of comparison (COC). For this analysis, the COC is the county in which the CBG is located.

The U.S. Census Bureau American Community Survey (ACS) data set was used to determine if any of the seven alternatives for the Mid-States cross areas of minority or low-income populations of concern. The ACS data were used to identify the minority and low-income populations within the Mid-States Corridor study area. CBGs are the smallest area which contain information on minority and low-income residents. For this reason, CBGs were used to define the Socioeconomic Study Area. The CBG data were used to identify populations of concern.

The study area for the seven different alternatives of the Mid-States Corridor had 360 block groups identified and used as part of the EJ analysis to identify the geographic limits of each potential affected community.

According to INDOT EJ guidance¹, an affected community has a population of concern if:

1. The minority or low-income population of an affected community is greater than 50 percent of the affected community’s total populations; or
2. The percentage minority or low-income population of an affected community is 25 percent (or more) higher than the reference population or COC.

If either of items 1 or 2 apply, the affected community is defined as having an elevated concentration of minority or low-income populations. The equations to determine percentages for each indicator are as follows:

1. Minority Populations:
$$\text{COC/AC Minority population \%} = \frac{\text{Non - white Minority}}{\text{Total Population}}$$

$$125\% \text{ COC} = \text{COC Minority Population} \times 1.25$$

¹ INDOT Environmental Justice in NEPA Documentation Process, https://www.in.gov/indot/engineering/files/ES_EnvironmentalJusticeGuidance_2012.pdf



2. Low-Income Populations:

$$\text{COC/AC Low Income population \%} = \frac{\text{Total Population Below Poverty Level (estimated)}}{\text{Total Population}}$$

$$125\% \text{ COC} = \text{COC Low Income Population} \times 1.25$$

Based on these calculations, when the concentration of minority or low-income individuals in an affected area is greater than 50 percent or if the concentration in an affected community is 25 percent or more than that of the COC, the affected community is referred to as having an elevated concentration of minority or low-income populations.

ANALYSIS

Within the study area for the Mid-States Corridor project, the county for each of the block groups was utilized as the COC to identify block groups with elevated minority and low-income populations.

The following section provides a summary of the minority and low-income populations with the counties as COC, in the form of tables. **Figure 1** shows a map of the Mid-States Corridor alternatives with the CBGs with the potential for minority and/or low-income population impacts.

Table 1 provides a summary of census tracts that have at least one alternative, or an associated Local Improvement, intersecting it. The calculations for the environmental justice analysis using the block groups for each of the 12 counties for minority population totals are included in **Table 2**. The breakdown by race for Non-Hispanic or Latinos for the minority population data in **Table 2** can be found in **Table 3**, and the breakdown by race for Hispanic or Latinos can be found in **Table 4**. The calculations for the environmental justice analysis using the block groups for each of the 12 counties for low-income populations are included in **Table 5**. The breakdown by race for population data and calculations for the environmental justice analysis for the Census Tract Block Groups in which the local improvements are located can be found in **Table 6**. The calculations for low-income populations for the environmental justice analysis using the block groups for each of the census tract block groups in which local improvements are located are included in **Table 7**. In **Table 7**, seven census tract block groups indicate “No Data,” as no data was available from the ACS for these block groups. Therefore, an analysis for potential impacts to low-income populations was unable to be completed for those block groups. Potential EJ impacts could arise in these block groups during project development in addition to the others indicated if low-income population data becomes available for these block groups.



FIGURE 1: ENVIRONMENTAL JUSTICE BLOCK GROUPS IN PROJECT VICINITY

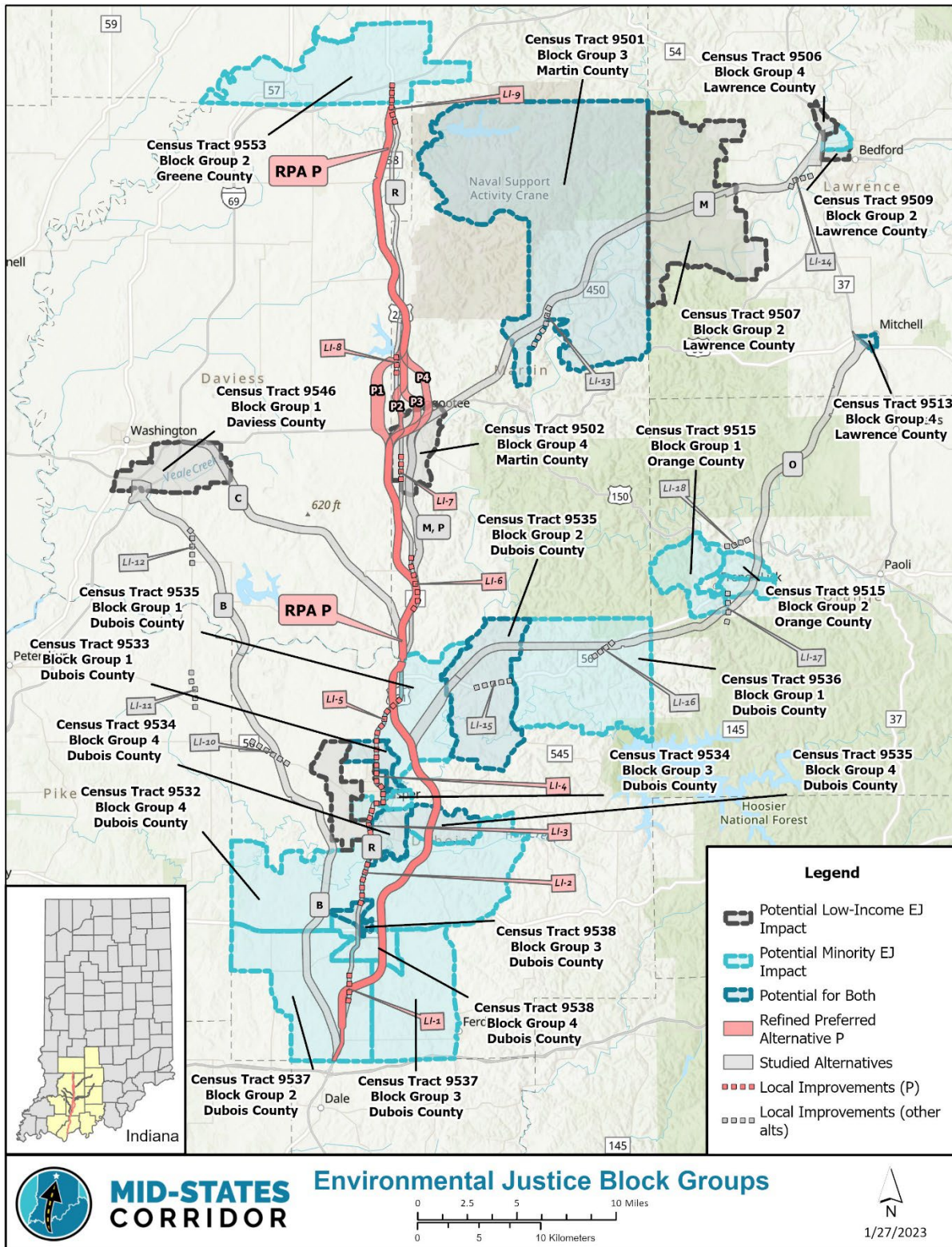




TABLE 1. ENVIRONMENTAL JUSTICE SUMMARY TABLE

Environmental Justice Summary Table (Table 1)								
Census Tract /Block Group	Minority Population			Low Income Population			Alternatives	Impact Area
	Population for Minority Population Calculations	Persons	Percentage	Population for Low Income Population Calculations	Persons	Percentage		
9543/1	1,006	22	2.19	1,006	36	3.58	P, RPA P, R	Rural
9543/4	868	62	7.14	806	99	12.28	P, RPA P, R	Rural
9544/3	1,265	32	2.53	1,265	145	11.46	C	Rural
9545/1	1,897	0	0.00	1,897	0	0.00	P, RPA P, R	Rural
9545/2	4,005	26	0.65	4,005	351	8.76	P, RPA P	Rural
9545/3	1,593	8	0.50	1,593	216	13.56	C	Rural
9545/4	1,789	0	0.00	1,746	167	9.56	P, RPA P	Rural
9545/5	755	0	0.00	754	12	1.59	B, C	Rural
9546/1^	1,363	0	0.00	1,314	207	0.16	B, C	Suburban
9546/4	1,368	22	1.61	1,368	31	2.27	B	Rural
9532/1	1,260	3	0.24	1,260	7	0.56	B, C, M, O, P, RPA P, R	Suburban
9532/2	1,756	0	0.00	1,756	0	0.00	B	Suburban
9532/3^	2,643	0	0.00	2,643	322	12.18	B, C, M, O, P, RPA P, R	Suburban
9532/4*	988	119	0.12	988	0	0.00	B, C, M, O, P, RPA P, R	Suburban



Environmental Justice Summary Table (Table 1)								
Census Tract /Block Group	Minority Population			Low Income Population			Alternatives	Impact Area
	Population for Minority Population Calculations	Persons	Percentage	Population for Low Income Population Calculations	Persons	Percentage		
9533/1*^	3,162	807	25.52	3,162	373	0.12	C, M, O, P, RPA P, R	Urban
9533/2^	1,658	0	0.00	1,591	397	0.25	M, O, P, RPA P, R	Urban
9533/3	1,681	2	0.12	1,377	67	4.87	M, O, P, RPA P, R	Urban
9533/4	783	0	0.00	783	22	2.81	M, O, P, RPA P, R	Urban
9534/1*	1,558	58	3.72	1,558	43	0.03	B, C, M, O, P, RPA P, R	Urban
9534/2	858	0	0.00	759	18	2.37	M, O, P, RPA P, R	Urban
9534/4*^	2,427	321	13.23	2,181	309	0.14	B, C, M, O, P, RPA P, R	Urban
9535/1*	726	113	0.16	726	14	0.02	C, M, O, P, RPA P, R	Urban
9535/2*^	684	65	0.10	684	90	0.13	O	Rural
9535/3	612	0	0.00	612	22	3.59	C, M, O, P, RPA P	Rural
9535/4*^	1,336	249	0.19	1,336	271	0.20	C, M, O, P, RPA P	Suburban
9535/5*	1,595	87	0.05	1,595	6	0.00	B, C, M, O, P, RPA P, R	Suburban



Environmental Justice Summary Table (Table 1)								
Census Tract /Block Group	Minority Population			Low Income Population			Alternatives	Impact Area
	Population for Minority Population Calculations	Persons	Percentage	Population for Low Income Population Calculations	Persons	Percentage		
9536/1*	1,049	77	0.07	1,049	91	0.09	O	Rural
9537/2*	1,856	56	0.03	1,856	54	0.03	B, C, M, O, P, RPA P, R	Suburban
9537/3*	1,535	57	0.04	1,535	97	0.06	C, M, O, P, RPA P	Suburban
9538/1*	429	74	17.25	429	0	0.00	R	Urban
9538/2*^	1,809	678	37.48	1,729	491	0.28	B, C, M, O, P, RPA P, R	Urban
9538/4*	1,149	93	0.08	1,149	62	0.05	C, M, O, P, RPA P, R	Urban
9538/5*	1,257	428	34.05	1,257	17	1.35	R	Suburban
9553/2*	887	152	0.17	887	72	0.08	P, RPA P, R	Rural
9506/4^	858	45	0.05	844	170	0.20	M	Suburban
9506/5	711	20	2.81	705	89	12.62	M	Rural
9507/1	1,725	44	2.55	1,710	99	5.79	M	Rural
9507/2^	1,181	0	0.00	1,181	384	0.33	M	Rural
9507/4	1,455	56	3.85	1,408	178	12.64	O	Rural
9509/2^	592	31	0.05	503	122	0.24	M	Suburban
9510/4*	821	52	0.06	821	94	0.11	M	Suburban
9513/2	641	11	1.72	641	40	6.24	O	Urban



Environmental Justice Summary Table (Table 1)								
Census Tract /Block Group	Minority Population			Low Income Population			Alternatives	Impact Area
	Population for Minority Population Calculations	Persons	Percentage	Population for Low Income Population Calculations	Persons	Percentage		
9513/4*^	1,214	121	0.10	1,108	347	0.31	O	Urban
9501/1	778	11	1.41	778	28	3.60	P, RPA P, R	Rural
9501/2	802	0	0.00	802	25	3.12	M, P, RPA P	Rural
9501/3*^	1,064	165	0.16	867	193	0.22	M	Rural
9502/1	1,163	26	2.24	1,147	99	8.63	P, RPA P, R	Urban
9502/2	778	7	0.90	778	101	12.98	RPA P, R	Urban
9502/3	625	3	0.48	625	52	8.32	RPA P, R	Urban
9502/4^	1,150	8	0.01	1,109	194	0.17	M, P, RPA P, R	Suburban
9503/1	1,250	22	1.76	1,202	126	10.48	M	Rural
9503/3	1,823	34	1.87	1,823	186	10.20	C, M, P, RPA P, R	Rural
9514/2	1,066	0	0.00	1,066	85	7.97	O	Rural
9514/3	976	0	0.00	976	62	6.35	O	Rural
9515/1*	1,154	246	0.21	1,144	184	0.16	O	Suburban
9515/2*	721	55	0.08	706	107	0.15	O	Suburban
9515/3*	622	63	0.10	544	59	0.11	O	Suburban
9516/1	1,813	87	4.80	1,813	104	5.74	O	Rural
*Denotes a potential Minority EJ Community								
^Denotes a potential Low-Income EJ Community								

TABLE 2. EJ ANALYSIS, MINORITY POPULATIONS TOTALS

Potential Environmental Justice Impacts – Minority (Table 2)											
County	Census Tract	Block Group	Community of Comparison (County Data)				Affected Community (Block Group)			Minority EJ Community?	Alternatives Impacted
			County Total for Minority Estimate	Number of People of Minority Heritage in County	Percent People of Minority Heritage in County	125% of Percent People of Minority Heritage in County	Block Group Total for Minority Estimate	Number of People of Minority Heritage in Block Group	Percent People of Minority Heritage in Block Group		
Crawford	9519	1	10,569	418	3.95	4.94	1,401	96	6.85	YES	-
Crawford	9519	2	10,569	418	3.95	4.94	1,225	90	7.35	YES	-
Crawford	9519	3	10,569	418	3.95	4.94	1,093	22	2.01	NO	-
Crawford	9520	1	10,569	418	3.95	4.94	1,181	69	5.84	YES	-
Crawford	9520	2	10,569	418	3.95	4.94	1,316	12	0.91	NO	-
Crawford	9520	3	10,569	418	3.95	4.94	1,697	44	2.59	NO	-
Crawford	9521	1	10,569	418	3.95	4.94	1,114	23	2.06	NO	-
Crawford	9521	2	10,569	418	3.95	4.94	966	58	6.00	YES	-
Crawford	9521	3	10,569	418	3.95	4.94	576	4	0.69	NO	-
Daviess	9543	1	33,120	2,796	8.44	10.55	1,006	22	2.19	NO	P, RPA P, R
Daviess	9543	2	33,120	2,796	8.44	10.55	1,120	59	5.27	NO	-
Daviess	9543	3	33,120	2,796	8.44	10.55	536	21	3.92	NO	-
Daviess	9543	4	33,120	2,796	8.44	10.55	868	62	7.14	NO	P, RPA P, R
Daviess	9543	5	33,120	2,796	8.44	10.55	642	29	4.52	NO	-
Daviess	9544	1	33,120	2,796	8.44	10.55	536	5	0.93	NO	-
Daviess	9544	2	33,120	2,796	8.44	10.55	763	27	3.54	NO	-
Daviess	9544	3	33,120	2,796	8.44	10.55	1,265	32	2.53	NO	C
Daviess	9545	1	33,120	2,796	8.44	10.55	1,897	0	0.00	NO	P, RPA P, R
Daviess	9545	2	33,120	2,796	8.44	10.55	4,005	26	0.65	NO	P, RPA P
Daviess	9545	3	33,120	2,796	8.44	10.55	1,593	8	0.50	NO	C
Daviess	9545	4	33,120	2,796	8.44	10.55	1,789	0	0.00	NO	P, RPA P
Daviess	9545	5	33,120	2,796	8.44	10.55	755	0	0.00	NO	B, C
Daviess	9546	1	33,120	2,796	8.44	10.55	1,363	0	0.00	NO	B, C
Daviess	9546	2	33,120	2,796	8.44	10.55	777	40	5.15	NO	-
Daviess	9546	3	33,120	2,796	8.44	10.55	548	38	6.93	NO	-



Potential Environmental Justice Impacts – Minority (Table 2)											
County	Census Tract	Block Group	Community of Comparison (County Data)				Affected Community (Block Group)			Minority EJ Community?	Alternatives Impacted
			County Total for Minority Estimate	Number of People of Minority Heritage in County	Percent People of Minority Heritage in County	125% of Percent People of Minority Heritage in County	Block Group Total for Minority Estimate	Number of People of Minority Heritage in Block Group	Percent People of Minority Heritage in Block Group		
Daviess	9546	4	33,120	2,796	8.44	10.55	1,368	22	1.61	NO	B, C-
Daviess	9547	1	33,120	2,796	8.44	10.55	1,619	519	32.06	YES	-
Daviess	9547	2	33,120	2,796	8.44	10.55	1,118	357	31.93	YES	-
Daviess	9547	3	33,120	2,796	8.44	10.55	671	180	26.83	YES	-
Daviess	9547	4	33,120	2,796	8.44	10.55	1,053	743	70.56	YES	-
Daviess	9548	1	33,120	2,796	8.44	10.55	1,205	99	8.22	NO	-
Daviess	9548	2	33,120	2,796	8.44	10.55	721	85	11.79	YES	-
Daviess	9548	3	33,120	2,796	8.44	10.55	653	52	7.96	NO	-
Daviess	9548	4	33,120	2,796	8.44	10.55	572	121	21.15	YES	-
Daviess	9549	1	33,120	2,796	8.44	10.55	977	68	6.96	NO	-
Daviess	9549	2	33,120	2,796	8.44	10.55	1,127	88	7.81	NO	-
Daviess	9549	3	33,120	2,796	8.44	10.55	1,241	80	6.45	NO	-
Daviess	9549	4	33,120	2,796	8.44	10.55	1,332	13	0.98	NO	-
Dubois	9532	1	285,813	4,165	1.46	1.82	1,260	3	0.24	NO	B, C, M, P, RPA P, R-,
Dubois	9532	2	285,813	4,165	1.46	1.82	1,756	0	0.00	NO	B,-
Dubois	9532	3	285,813	4,165	1.46	1.82	2,643	0	0.00	NO	B, R-
Dubois	9532	4	285,813	4,165	1.46	1.82	988	119	12.04	YES	B, R
Dubois	9533	1	285,813	4,165	1.46	1.82	3,162	807	25.52	YES	R-
Dubois	9533	2	285,813	4,165	1.46	1.82	1,658	0	0.00	NO	R-
Dubois	9533	3	285,813	4,165	1.46	1.82	1,681	2	0.12	NO	R-
Dubois	9533	4	285,813	4,165	1.46	1.82	783	0	0.00	NO	R-
Dubois	9534	1	285,813	4,165	1.46	1.82	1,558	58	3.72	YES	B, R-
Dubois	9534	2	285,813	4,165	1.46	1.82	858	0	0.00	NO	R-
Dubois	9534	3	285,813	4,165	1.46	1.82	544	12	2.21	YES	R-
Dubois	9534	4	285,813	4,165	1.46	1.82	2,427	321	13.23	YES	B, R-
Dubois	9535	1	285,813	4,165	1.46	1.82	726	113	15.56	YES	C, M, O, P, RPA P, R



Potential Environmental Justice Impacts – Minority (Table 2)											
County	Census Tract	Block Group	Community of Comparison (County Data)				Affected Community (Block Group)			Minority EJ Community?	Alternatives Impacted
			County Total for Minority Estimate	Number of People of Minority Heritage in County	Percent People of Minority Heritage in County	125% of Percent People of Minority Heritage in County	Block Group Total for Minority Estimate	Number of People of Minority Heritage in Block Group	Percent People of Minority Heritage in Block Group		
Dubois	9535	2	285,813	4,165	1.46	1.82	684	65	9.50	YES	O
Dubois	9535	3	285,813	4,165	1.46	1.82	612	0	0.00	NO	C, M, O, P, RPA P-
Dubois	9535	4	285,813	4,165	1.46	1.82	1,336	249	18.64	YES	C, M, O, P, RPA P
Dubois	9535	5	285,813	4,165	1.46	1.82	1,595	87	5.45	YES	C, M, O, P, RPA P, R
Dubois	9536	1	285,813	4,165	1.46	1.82	1,049	77	7.34	YES	O
Dubois	9536	2	285,813	4,165	1.46	1.82	1,919	0	0.00	NO	-
Dubois	9536	3	285,813	4,165	1.46	1.82	821	11	1.34	NO	-
Dubois	9536	4	285,813	4,165	1.46	1.82	1,542	15	0.97	NO	-
Dubois	9537	1	285,813	4,165	1.46	1.82	923	15	1.63	NO	-
Dubois	9537	2	285,813	4,165	1.46	1.82	1,856	56	3.02	YES	B, C, M, O, P, RPA P, R
Dubois	9537	3	285,813	4,165	1.46	1.82	1,535	57	3.71	YES	C, M, O, P, RPA P
Dubois	9537	4	285,813	4,165	1.46	1.82	2,923	8	0.27	NO	-
Dubois	9538	1	285,813	4,165	1.46	1.82	429	74	17.25	YES	R-
Dubois	9538	2	285,813	4,165	1.46	1.82	1,809	678	37.48	YES	R-
Dubois	9538	3	285,813	4,165	1.46	1.82	1,060	817	77.08	YES	R-
Dubois	9538	4	285,813	4,165	1.46	1.82	1,149	93	8.09	YES	C, M, O, P, RPA P, R
Dubois	9538	5	285,813	4,165	1.46	1.82	1,257	428	34.05	YES	R-
Greene	9547.01	1	32,159	1,088	3.38	4.23	695	0	0.00	NO	-
Greene	9547.01	2	32,159	1,088	3.38	4.23	1,193	22	1.84	NO	-
Greene	9547.01	3	32,159	1,088	3.38	4.23	1,133	35	3.09	NO	-
Greene	9547.01	4	32,159	1,088	3.38	4.23	1,685	56	3.32	NO	-
Greene	9547.02	1	32,159	1,088	3.38	4.23	1,314	5	0.38	NO	-
Greene	9547.02	2	32,159	1,088	3.38	4.23	2,239	14	0.63	NO	-



Potential Environmental Justice Impacts – Minority (Table 2)											
County	Census Tract	Block Group	Community of Comparison (County Data)				Affected Community (Block Group)			Minority EJ Community?	Alternatives Impacted
			County Total for Minority Estimate	Number of People of Minority Heritage in County	Percent People of Minority Heritage in County	125% of Percent People of Minority Heritage in County	Block Group Total for Minority Estimate	Number of People of Minority Heritage in Block Group	Percent People of Minority Heritage in Block Group		
Greene	9548	1	32,159	1,088	3.38	4.23	1,182	0	0.00	NO	-
Greene	9548	2	32,159	1,088	3.38	4.23	569	34	5.98	YES	-
Greene	9548	3	32,159	1,088	3.38	4.23	729	11	1.51	NO	-
Greene	9548	4	32,159	1,088	3.38	4.23	1,122	10	0.89	NO	-
Greene	9549	1	32,159	1,088	3.38	4.23	855	0	0.00	NO	-
Greene	9549	2	32,159	1,088	3.38	4.23	1,657	0	0.00	NO	-
Greene	9549	3	32,159	1,088	3.38	4.23	1,779	87	4.89	YES	-
Greene	9549	4	32,159	1,088	3.38	4.23	494	27	5.47	YES	-
Greene	9550	1	32,159	1,088	3.38	4.23	890	76	8.54	YES	-
Greene	9550	2	32,159	1,088	3.38	4.23	979	18	1.84	NO	-
Greene	9550	3	32,159	1,088	3.38	4.23	1,008	53	5.26	YES	-
Greene	9551	1	32,159	1,088	3.38	4.23	711	22	3.09	NO	-
Greene	9551	2	32,159	1,088	3.38	4.23	744	5	0.67	NO	-
Greene	9551	3	32,159	1,088	3.38	4.23	884	24	2.71	NO	-
Greene	9551	4	32,159	1,088	3.38	4.23	586	150	25.60	YES	-
Greene	9552	1	32,159	1,088	3.38	4.23	714	10	1.40	NO	-
Greene	9552	2	32,159	1,088	3.38	4.23	990	48	4.85	YES	-
Greene	9552	3	32,159	1,088	3.38	4.23	465	36	7.74	YES	-
Greene	9553	1	32,159	1,088	3.38	4.23	1,030	8	0.78	NO	-
Greene	9553	2	32,159	1,088	3.38	4.23	887	152	17.14	YES	P, RPA P, R
Greene	9553	3	32,159	1,088	3.38	4.23	966	27	2.80	NO	-
Greene	9553	4	32,159	1,088	3.38	4.23	676	23	3.40	NO	-
Greene	9553	5	32,159	1,088	3.38	4.23	646	5	0.77	NO	-
Greene	9554	1	32,159	1,088	3.38	4.23	988	77	7.79	YES	-
Greene	9554	2	32,159	1,088	3.38	4.23	901	25	2.77	NO	-
Greene	9554	3	32,159	1,088	3.38	4.23	632	17	2.69	NO	-
Greene	9554	4	32,159	1,088	3.38	4.23	816	11	1.35	NO	-
Lawrence	9504	1	45,548	1,966	4.32	5.40	1,484	0	0.00	NO	-



Potential Environmental Justice Impacts – Minority (Table 2)											
County	Census Tract	Block Group	Community of Comparison (County Data)				Affected Community (Block Group)			Minority EJ Community?	Alternatives Impacted
			County Total for Minority Estimate	Number of People of Minority Heritage in County	Percent People of Minority Heritage in County	125% of Percent People of Minority Heritage in County	Block Group Total for Minority Estimate	Number of People of Minority Heritage in Block Group	Percent People of Minority Heritage in Block Group		
Lawrence	9504	2	45,548	1,966	4.32	5.40	1,171	91	7.77	YES	-
Lawrence	9504	3	45,548	1,966	4.32	5.40	1,109	109	9.83	YES	-
Lawrence	9505	1	45,548	1,966	4.32	5.40	1,004	0	0.00	NO	-
Lawrence	9505	2	45,548	1,966	4.32	5.40	1,454	141	9.70	YES	-
Lawrence	9505	3	45,548	1,966	4.32	5.40	1,568	32	2.04	NO	-
Lawrence	9505	4	45,548	1,966	4.32	5.40	584	0	0.00	NO	-
Lawrence	9506	1	45,548	1,966	4.32	5.40	1,699	0	0.00	NO	-
Lawrence	9506	2	45,548	1,966	4.32	5.40	1,462	70	4.79	NO	-
Lawrence	9506	3	45,548	1,966	4.32	5.40	2,383	20	0.84	NO	-
Lawrence	9506	4	45,548	1,966	4.32	5.40	858	45	5.24	NO	M
Lawrence	9506	5	45,548	1,966	4.32	5.40	711	20	2.81	NO	M-
Lawrence	9507	1	45,548	1,966	4.32	5.40	1,725	44	2.55	NO	M-
Lawrence	9507	2	45,548	1,966	4.32	5.40	1,181	0	0.00	NO	M
Lawrence	9507	3	45,548	1,966	4.32	5.40	1,152	88	7.64	YES	-
Lawrence	9507	4	45,548	1,966	4.32	5.40	1,455	56	3.85	NO	O-
Lawrence	9507	5	45,548	1,966	4.32	5.40	1,388	0	0.00	NO	-
Lawrence	9508	1	45,548	1,966	4.32	5.40	1,131	99	8.75	YES	-
Lawrence	9508	2	45,548	1,966	4.32	5.40	1,008	9	0.89	NO	-
Lawrence	9508	3	45,548	1,966	4.32	5.40	1,683	59	3.51	NO	-
Lawrence	9509	1	45,548	1,966	4.32	5.40	576	96	16.67	YES	-
Lawrence	9509	2	45,548	1,966	4.32	5.40	592	31	5.24	NO	M
Lawrence	9509	3	45,548	1,966	4.32	5.40	887	101	11.39	YES	-
Lawrence	9509	4	45,548	1,966	4.32	5.40	676	57	8.43	YES	-
Lawrence	9510	1	45,548	1,966	4.32	5.40	913	58	6.35	YES	-
Lawrence	9510	2	45,548	1,966	4.32	5.40	785	0	0.00	NO	-
Lawrence	9510	3	45,548	1,966	4.32	5.40	855	52	6.08	YES	-
Lawrence	9510	4	45,548	1,966	4.32	5.40	821	52	6.33	YES	M
Lawrence	9511	1	45,548	1,966	4.32	5.40	649	115	17.72	YES	-



Potential Environmental Justice Impacts – Minority (Table 2)											
County	Census Tract	Block Group	Community of Comparison (County Data)				Affected Community (Block Group)			Minority EJ Community?	Alternatives Impacted
			County Total for Minority Estimate	Number of People of Minority Heritage in County	Percent People of Minority Heritage in County	125% of Percent People of Minority Heritage in County	Block Group Total for Minority Estimate	Number of People of Minority Heritage in Block Group	Percent People of Minority Heritage in Block Group		
Lawrence	9511	2	45,548	1,966	4.32	5.40	1,188	141	11.87	YES	-
Lawrence	9511	3	45,548	1,966	4.32	5.40	1,132	16	1.41	NO	-
Lawrence	9512	1	45,548	1,966	4.32	5.40	1,515	36	2.38	NO	-
Lawrence	9512	2	45,548	1,966	4.32	5.40	3,556	170	4.78	NO	-
Lawrence	9512	3	45,548	1,966	4.32	5.40	1,178	0	0.00	NO	-
Lawrence	9512	4	45,548	1,966	4.32	5.40	870	0	0.00	NO	-
Lawrence	9513	1	45,548	1,966	4.32	5.40	721	26	3.61	NO	-
Lawrence	9513	2	45,548	1,966	4.32	5.40	641	11	1.72	NO	O-
Lawrence	9513	3	45,548	1,966	4.32	5.40	569	0	0.00	NO	-
Lawrence	9513	4	45,548	1,966	4.32	5.40	1,214	121	9.97	YES	O
Martin	9501	1	10,212	302	2.96	3.70	778	11	1.41	NO	P, RPA P, R-
Martin	9501	2	10,212	302	2.96	3.70	802	0	0.00	NO	M, P, RPA P-
Martin	9501	3	10,212	302	2.96	3.70	1,064	165	15.51	YES	M
Martin	9502	1	10,212	302	2.96	3.70	1,163	26	2.24	NO	P, RPA P, R-
Martin	9502	2	10,212	302	2.96	3.70	778	7	0.90	NO	RPA P, R-
Martin	9502	3	10,212	302	2.96	3.70	625	3	0.48	NO	RPA P, R-
Martin	9502	4	10,212	302	2.96	3.70	1,150	8	0.70	NO	M, P, RPA P. R
Martin	9503	1	10,212	302	2.96	3.70	1,250	22	1.76	NO	M-
Martin	9503	2	10,212	302	2.96	3.70	779	26	3.34	NO	-
Martin	9503	3	10,212	302	2.96	3.70	1,823	34	1.87	NO	C, M, P, RPA P, R-
Monroe	1	1	146,461	24,146	16.49	20.61	1,757	280	15.94	NO	-
Monroe	1	2	146,461	24,146	16.49	20.61	1,929	208	10.78	NO	-
Monroe	1	3	146,461	24,146	16.49	20.61	820	145	17.68	NO	-
Monroe	2.01	1	146,461	24,146	16.49	20.61	1,046	190	18.16	NO	-
Monroe	2.01	2	146,461	24,146	16.49	20.61	3,020	324	10.73	NO	-
Monroe	2.01	3	146,461	24,146	16.49	20.61	2,710	1,250	46.13	YES	-



Potential Environmental Justice Impacts – Minority (Table 2)											
County	Census Tract	Block Group	Community of Comparison (County Data)				Affected Community (Block Group)			Minority EJ Community?	Alternatives Impacted
			County Total for Minority Estimate	Number of People of Minority Heritage in County	Percent People of Minority Heritage in County	125% of Percent People of Minority Heritage in County	Block Group Total for Minority Estimate	Number of People of Minority Heritage in Block Group	Percent People of Minority Heritage in Block Group		
Monroe	2.02	1	146,461	24,146	16.49	20.61	3,237	822	25.39	YES	-
Monroe	2.02	2	146,461	24,146	16.49	20.61	3,253	903	27.76	YES	-
Monroe	3.01	1	146,461	24,146	16.49	20.61	823	90	10.94	NO	-
Monroe	3.01	2	146,461	24,146	16.49	20.61	1,063	108	10.16	NO	-
Monroe	3.01	3	146,461	24,146	16.49	20.61	1,156	203	17.56	NO	-
Monroe	3.01	4	146,461	24,146	16.49	20.61	1,299	158	12.16	NO	-
Monroe	3.02	1	146,461	24,146	16.49	20.61	1,075	123	11.44	NO	-
Monroe	3.02	2	146,461	24,146	16.49	20.61	839	75	8.94	NO	-
Monroe	3.02	3	146,461	24,146	16.49	20.61	708	101	14.27	NO	-
Monroe	3.02	4	146,461	24,146	16.49	20.61	559	0	0.00	NO	-
Monroe	4.01	1	146,461	24,146	16.49	20.61	1,614	335	20.76	YES	-
Monroe	4.01	2	146,461	24,146	16.49	20.61	711	87	12.24	NO	-
Monroe	4.01	3	146,461	24,146	16.49	20.61	1,859	345	18.56	NO	-
Monroe	4.02	1	146,461	24,146	16.49	20.61	4,501	916	20.35	NO	-
Monroe	4.02	2	146,461	24,146	16.49	20.61	937	209	22.31	YES	-
Monroe	5.01	1	146,461	24,146	16.49	20.61	1,290	118	9.15	NO	-
Monroe	5.01	2	146,461	24,146	16.49	20.61	2,022	520	25.72	YES	-
Monroe	5.01	3	146,461	24,146	16.49	20.61	1,736	184	10.60	NO	-
Monroe	5.02	1	146,461	24,146	16.49	20.61	1,113	177	15.90	NO	-
Monroe	5.02	2	146,461	24,146	16.49	20.61	710	232	32.68	YES	-
Monroe	5.02	3	146,461	24,146	16.49	20.61	1,457	319	21.89	YES	-
Monroe	6.01	1	146,461	24,146	16.49	20.61	1,441	331	22.97	YES	-
Monroe	6.01	2	146,461	24,146	16.49	20.61	2,501	570	22.79	YES	-
Monroe	6.02	1	146,461	24,146	16.49	20.61	2,730	763	27.95	YES	-
Monroe	6.02	2	146,461	24,146	16.49	20.61	946	142	15.01	NO	-
Monroe	7	1	146,461	24,146	16.49	20.61	1,271	134	10.54	NO	-
Monroe	7	2	146,461	24,146	16.49	20.61	574	57	9.93	NO	-
Monroe	7	3	146,461	24,146	16.49	20.61	1,329	157	11.81	NO	-



Potential Environmental Justice Impacts – Minority (Table 2)											
County	Census Tract	Block Group	Community of Comparison (County Data)				Affected Community (Block Group)			Minority EJ Community?	Alternatives Impacted
			County Total for Minority Estimate	Number of People of Minority Heritage in County	Percent People of Minority Heritage in County	125% of Percent People of Minority Heritage in County	Block Group Total for Minority Estimate	Number of People of Minority Heritage in Block Group	Percent People of Minority Heritage in Block Group		
Monroe	8	1	146,461	24,146	16.49	20.61	1,213	34	2.80	NO	-
Monroe	8	2	146,461	24,146	16.49	20.61	2,049	630	30.75	YES	-
Monroe	8	3	146,461	24,146	16.49	20.61	831	119	14.32	NO	-
Monroe	8	4	146,461	24,146	16.49	20.61	1,816	341	18.78	NO	-
Monroe	9.01	1	146,461	24,146	16.49	20.61	1,452	396	27.27	YES	-
Monroe	9.01	2	146,461	24,146	16.49	20.61	1,832	507	27.67	YES	-
Monroe	9.03	1	146,461	24,146	16.49	20.61	1,682	414	24.61	YES	-
Monroe	9.03	2	146,461	24,146	16.49	20.61	845	256	30.30	YES	-
Monroe	9.03	3	146,461	24,146	16.49	20.61	899	114	12.68	NO	-
Monroe	9.03	4	146,461	24,146	16.49	20.61	1,918	380	19.81	NO	-
Monroe	9.04	1	146,461	24,146	16.49	20.61	1,395	562	40.29	YES	-
Monroe	9.04	2	146,461	24,146	16.49	20.61	1,717	1,168	68.03	YES	-
Monroe	9.04	3	146,461	24,146	16.49	20.61	2,258	545	24.14	YES	-
Monroe	10.01	1	146,461	24,146	16.49	20.61	2,205	249	11.29	NO	-
Monroe	10.01	2	146,461	24,146	16.49	20.61	1,849	218	11.79	NO	-
Monroe	10.01	3	146,461	24,146	16.49	20.61	1,378	205	14.88	NO	-
Monroe	10.02	1	146,461	24,146	16.49	20.61	1,319	226	17.13	NO	-
Monroe	10.02	2	146,461	24,146	16.49	20.61	1,745	567	32.49	YES	-
Monroe	10.02	3	146,461	24,146	16.49	20.61	1,244	135	10.85	NO	-
Monroe	10.02	4	146,461	24,146	16.49	20.61	1,818	170	9.35	NO	-
Monroe	11.01	1	146,461	24,146	16.49	20.61	1,709	502	29.37	YES	-
Monroe	11.01	2	146,461	24,146	16.49	20.61	1,463	270	18.46	NO	-
Monroe	11.01	3	146,461	24,146	16.49	20.61	1,209	519	42.93	YES	-
Monroe	11.01	4	146,461	24,146	16.49	20.61	1,578	446	28.26	YES	-
Monroe	11.02	1	146,461	24,146	16.49	20.61	1,960	137	6.99	NO	-
Monroe	11.02	2	146,461	24,146	16.49	20.61	2,973	771	25.93	YES	-
Monroe	11.03	1	146,461	24,146	16.49	20.61	1,220	52	4.26	NO	-
Monroe	11.03	2	146,461	24,146	16.49	20.61	1,020	106	10.39	NO	-



Potential Environmental Justice Impacts – Minority (Table 2)											
County	Census Tract	Block Group	Community of Comparison (County Data)				Affected Community (Block Group)			Minority EJ Community?	Alternatives Impacted
			County Total for Minority Estimate	Number of People of Minority Heritage in County	Percent People of Minority Heritage in County	125% of Percent People of Minority Heritage in County	Block Group Total for Minority Estimate	Number of People of Minority Heritage in Block Group	Percent People of Minority Heritage in Block Group		
Monroe	11.03	3	146,461	24,146	16.49	20.61	480	83	17.29	NO	-
Monroe	12	1	146,461	24,146	16.49	20.61	961	0	0.00	NO	-
Monroe	12	2	146,461	24,146	16.49	20.61	997	10	1.00	NO	-
Monroe	12	3	146,461	24,146	16.49	20.61	1,279	56	4.38	NO	-
Monroe	12	4	146,461	24,146	16.49	20.61	631	30	4.75	NO	-
Monroe	12	5	146,461	24,146	16.49	20.61	912	107	11.73	NO	-
Monroe	12	6	146,461	24,146	16.49	20.61	1,411	179	12.69	NO	-
Monroe	13.01	1	146,461	24,146	16.49	20.61	3,124	175	5.60	NO	-
Monroe	13.01	2	146,461	24,146	16.49	20.61	672	0	0.00	NO	-
Monroe	13.01	3	146,461	24,146	16.49	20.61	607	130	21.42	YES	-
Monroe	13.01	4	146,461	24,146	16.49	20.61	1,353	41	3.03	NO	-
Monroe	13.03	1	146,461	24,146	16.49	20.61	1,547	0	0.00	NO	-
Monroe	13.03	2	146,461	24,146	16.49	20.61	2,834	117	4.13	NO	-
Monroe	13.03	3	146,461	24,146	16.49	20.61	1,770	135	7.63	NO	-
Monroe	13.04	1	146,461	24,146	16.49	20.61	1,266	27	2.13	NO	-
Monroe	13.04	2	146,461	24,146	16.49	20.61	832	0	0.00	NO	-
Monroe	13.04	3	146,461	24,146	16.49	20.61	1,991	27	1.36	NO	-
Monroe	13.05	1	146,461	24,146	16.49	20.61	2,489	79	3.17	NO	-
Monroe	14.01	1	146,461	24,146	16.49	20.61	1,556	70	4.50	NO	-
Monroe	14.01	2	146,461	24,146	16.49	20.61	782	6	0.77	NO	-
Monroe	14.02	1	146,461	24,146	16.49	20.61	775	31	4.00	NO	-
Monroe	14.02	2	146,461	24,146	16.49	20.61	1,101	0	0.00	NO	-
Monroe	14.02	3	146,461	24,146	16.49	20.61	1,484	124	8.36	NO	-
Monroe	14.02	4	146,461	24,146	16.49	20.61	1,163	151	12.98	NO	-
Monroe	14.02	5	146,461	24,146	16.49	20.61	1,160	103	8.88	NO	-
Monroe	15.01	1	146,461	24,146	16.49	20.61	2,330	253	10.86	NO	-
Monroe	15.01	2	146,461	24,146	16.49	20.61	2,345	198	8.44	NO	-
Monroe	15.01	3	146,461	24,146	16.49	20.61	1,434	202	14.09	NO	-



Potential Environmental Justice Impacts – Minority (Table 2)											
County	Census Tract	Block Group	Community of Comparison (County Data)				Affected Community (Block Group)			Minority EJ Community?	Alternatives Impacted
			County Total for Minority Estimate	Number of People of Minority Heritage in County	Percent People of Minority Heritage in County	125% of Percent People of Minority Heritage in County	Block Group Total for Minority Estimate	Number of People of Minority Heritage in Block Group	Percent People of Minority Heritage in Block Group		
Monroe	15.02	1	146,461	24,146	16.49	20.61	1,528	60	3.93	NO	-
Monroe	15.02	2	146,461	24,146	16.49	20.61	1,363	114	8.36	NO	-
Monroe	16	1	146,461	24,146	16.49	20.61	2,173	284	13.07	NO	-
Monroe	16	2	146,461	24,146	16.49	20.61	2,301	458	19.90	NO	-
Monroe	16	3	146,461	24,146	16.49	20.61	1,177	281	23.87	YES	-
Orange	9513	1	19,545	959	4.91	6.13	1,724	18	1.04	NO	-
Orange	9513	2	19,545	959	4.91	6.13	612	0	0.00	NO	-
Orange	9513	3	19,545	959	4.91	6.13	1,204	59	4.90	NO	-
Orange	9514	1	19,545	959	4.91	6.13	1,304	0	0.00	NO	-
Orange	9514	2	19,545	959	4.91	6.13	1,066	0	0.00	NO	O-
Orange	9514	3	19,545	959	4.91	6.13	976	0	0.00	NO	O-
Orange	9515	1	19,545	959	4.91	6.13	1,154	246	21.32	YES	O
Orange	9515	2	19,545	959	4.91	6.13	721	55	7.63	YES	O
Orange	9515	3	19,545	959	4.91	6.13	622	63	10.13	YES	O
Orange	9515	4	19,545	959	4.91	6.13	677	296	43.72	YES	-
Orange	9516	1	19,545	959	4.91	6.13	1,813	94	5.18	NO	O-
Orange	9516	2	19,545	959	4.91	6.13	1,442	0	0.00	NO	-
Orange	9517	1	19,545	959	4.91	6.13	1,064	26	2.44	NO	-
Orange	9517	2	19,545	959	4.91	6.13	508	0	0.00	NO	-
Orange	9517	3	19,545	959	4.91	6.13	834	82	9.83	YES	-
Orange	9517	4	19,545	959	4.91	6.13	558	3	0.54	NO	-
Orange	9518	1	19,545	959	4.91	6.13	940	0	0.00	NO	-
Orange	9518	2	19,545	959	4.91	6.13	1,188	0	0.00	NO	-
Orange	9518	3	19,545	959	4.91	6.13	1,138	17	1.49	NO	-
Perry	9522	1	19,102	1,126	5.89	7.37	1,031	0	0.00	NO	-
Perry	9522	2	19,102	1,126	5.89	7.37	961	26	2.71	NO	-
Perry	9522	3	19,102	1,126	5.89	7.37	2,502	429	17.15	YES	-
Perry	9522	4	19,102	1,126	5.89	7.37	850	0	0.00	NO	-



Potential Environmental Justice Impacts – Minority (Table 2)											
County	Census Tract	Block Group	Community of Comparison (County Data)				Affected Community (Block Group)			Minority EJ Community?	Alternatives Impacted
			County Total for Minority Estimate	Number of People of Minority Heritage in County	Percent People of Minority Heritage in County	125% of Percent People of Minority Heritage in County	Block Group Total for Minority Estimate	Number of People of Minority Heritage in Block Group	Percent People of Minority Heritage in Block Group		
Perry	9523	1	19,102	1,126	5.89	7.37	891	9	1.01	NO	-
Perry	9523	2	19,102	1,126	5.89	7.37	1,023	0	0.00	NO	-
Perry	9523	3	19,102	1,126	5.89	7.37	1,370	86	6.28	NO	-
Perry	9524	1	19,102	1,126	5.89	7.37	1,122	25	2.23	NO	-
Perry	9524	2	19,102	1,126	5.89	7.37	891	25	2.81	NO	-
Perry	9524	3	19,102	1,126	5.89	7.37	964	63	6.54	NO	-
Perry	9524	4	19,102	1,126	5.89	7.37	1,004	66	6.57	NO	-
Perry	9525	1	19,102	1,126	5.89	7.37	1,048	106	10.11	YES	-
Perry	9525	2	19,102	1,126	5.89	7.37	931	69	7.41	YES	-
Perry	9525	3	19,102	1,126	5.89	7.37	1,232	75	6.09	NO	-
Perry	9525	4	19,102	1,126	5.89	7.37	1,208	60	4.97	NO	-
Perry	9526	1	19,102	1,126	5.89	7.37	1,076	40	3.72	NO	-
Perry	9526	2	19,102	1,126	5.89	7.37	998	47	4.71	NO	-
Pike	9539	1	12,378	455	3.68	4.59	712	0	0.00	NO	-
Pike	9539	2	12,378	455	3.68	4.59	1,175	23	1.96	NO	-
Pike	9539	3	12,378	455	3.68	4.59	1,364	195	14.30	YES	-
Pike	9540	1	12,378	455	3.68	4.59	671	16	2.38	NO	-
Pike	9540	2	12,378	455	3.68	4.59	1,107	35	3.16	NO	-
Pike	9540	3	12,378	455	3.68	4.59	1,309	62	4.74	YES	-
Pike	9541	1	12,378	455	3.68	4.59	565	0	0.00	NO	-
Pike	9541	2	12,378	455	3.68	4.59	1,984	32	1.61	NO	-
Pike	9541	3	12,378	455	3.68	4.59	605	0	0.00	NO	-
Pike	9542	1	12,378	455	3.68	4.59	627	0	0.00	NO	-
Pike	9542	2	12,378	455	3.68	4.59	960	87	9.06	YES	-
Pike	9542	3	12,378	455	3.68	4.59	715	5	0.70	NO	-
Pike	9542	4	12,378	455	3.68	4.59	584	0	0.00	NO	-
Spencer	9527	1	20,447	1,050	5.14	6.42	1,377	37	2.69	NO	-
Spencer	9527	2	20,447	1,050	5.14	6.42	888	9	1.01	NO	-



Potential Environmental Justice Impacts – Minority (Table 2)											
County	Census Tract	Block Group	Community of Comparison (County Data)				Affected Community (Block Group)			Minority EJ Community?	Alternatives Impacted
			County Total for Minority Estimate	Number of People of Minority Heritage in County	Percent People of Minority Heritage in County	125% of Percent People of Minority Heritage in County	Block Group Total for Minority Estimate	Number of People of Minority Heritage in Block Group	Percent People of Minority Heritage in Block Group		
Spencer	9527	3	20,447	1,050	5.14	6.42	861	155	18.00	YES	-
Spencer	9527	4	20,447	1,050	5.14	6.42	1,072	242	22.57	YES	-
Spencer	9527	5	20,447	1,050	5.14	6.42	3,196	92	2.88	NO	-
Spencer	9528	1	20,447	1,050	5.14	6.42	1,009	13	1.29	NO	-
Spencer	9528	2	20,447	1,050	5.14	6.42	896	8	0.89	NO	-
Spencer	9528	3	20,447	1,050	5.14	6.42	1,284	62	4.83	NO	-
Spencer	9529	1	20,447	1,050	5.14	6.42	818	10	1.22	NO	-
Spencer	9529	2	20,447	1,050	5.14	6.42	863	26	3.01	NO	-
Spencer	9529	3	20,447	1,050	5.14	6.42	1,043	41	3.93	NO	-
Spencer	9530	1	20,447	1,050	5.14	6.42	990	19	1.92	NO	-
Spencer	9530	2	20,447	1,050	5.14	6.42	2,064	32	1.55	NO	-
Spencer	9530	3	20,447	1,050	5.14	6.42	744	5	0.67	NO	-
Spencer	9531	1	20,447	1,050	5.14	6.42	565	87	15.40	YES	-
Spencer	9531	2	20,447	1,050	5.14	6.42	2,777	212	7.63	YES	-
Warrick	301	1	62,280	4,737	7.61	9.51	1,144	0	0.00	NO	-
Warrick	301	2	62,280	4,737	7.61	9.51	503	0	0.00	NO	-
Warrick	301	3	62,280	4,737	7.61	9.51	1,117	26	2.33	NO	-
Warrick	301	4	62,280	4,737	7.61	9.51	875	0	0.00	NO	-
Warrick	302	1	62,280	4,737	7.61	9.51	831	19	2.29	NO	-
Warrick	302	2	62,280	4,737	7.61	9.51	971	3	0.31	NO	-
Warrick	302	3	62,280	4,737	7.61	9.51	890	91	10.22	YES	-
Warrick	302	4	62,280	4,737	7.61	9.51	1,200	12	1.00	NO	-
Warrick	303	1	62,280	4,737	7.61	9.51	3,781	171	4.52	NO	-
Warrick	303	2	62,280	4,737	7.61	9.51	1,719	74	4.30	NO	-
Warrick	304	1	62,280	4,737	7.61	9.51	1,302	31	2.38	NO	-
Warrick	304	2	62,280	4,737	7.61	9.51	580	0	0.00	NO	-
Warrick	304	3	62,280	4,737	7.61	9.51	762	15	1.97	NO	-
Warrick	305	1	62,280	4,737	7.61	9.51	2,229	354	15.88	YES	-



Potential Environmental Justice Impacts – Minority (Table 2)											
County	Census Tract	Block Group	Community of Comparison (County Data)				Affected Community (Block Group)			Minority EJ Community?	Alternatives Impacted
			County Total for Minority Estimate	Number of People of Minority Heritage in County	Percent People of Minority Heritage in County	125% of Percent People of Minority Heritage in County	Block Group Total for Minority Estimate	Number of People of Minority Heritage in Block Group	Percent People of Minority Heritage in Block Group		
Warrick	305	2	62,280	4,737	7.61	9.51	1,783	82	4.60	NO	-
Warrick	305	3	62,280	4,737	7.61	9.51	1,973	90	4.56	NO	-
Warrick	305	4	62,280	4,737	7.61	9.51	1,012	132	13.04	YES	-
Warrick	306	1	62,280	4,737	7.61	9.51	1,206	65	5.39	NO	-
Warrick	306	2	62,280	4,737	7.61	9.51	846	0	0.00	NO	-
Warrick	306	3	62,280	4,737	7.61	9.51	1,346	73	5.42	NO	-
Warrick	306	4	62,280	4,737	7.61	9.51	523	17	3.25	NO	-
Warrick	306	5	62,280	4,737	7.61	9.51	691	15	2.17	NO	-
Warrick	306	6	62,280	4,737	7.61	9.51	947	11	1.16	NO	-
Warrick	306	7	62,280	4,737	7.61	9.51	734	52	7.08	NO	-
Warrick	307.02	1	62,280	4,737	7.61	9.51	2,879	75	2.61	NO	-
Warrick	307.02	2	62,280	4,737	7.61	9.51	2,933	669	22.81	YES	-
Warrick	307.02	3	62,280	4,737	7.61	9.51	895	127	14.19	YES	-
Warrick	307.02	4	62,280	4,737	7.61	9.51	393	0	0.00	NO	-
Warrick	307.03	1	62,280	4,737	7.61	9.51	440	12	2.73	NO	-
Warrick	307.03	2	62,280	4,737	7.61	9.51	766	25	3.26	NO	-
Warrick	307.03	3	62,280	4,737	7.61	9.51	1,972	191	9.69	YES	-
Warrick	307.03	4	62,280	4,737	7.61	9.51	2,483	122	4.91	NO	-
Warrick	307.04	1	62,280	4,737	7.61	9.51	2,061	98	4.75	NO	-
Warrick	307.04	2	62,280	4,737	7.61	9.51	2,747	251	9.14	NO	-
Warrick	307.05	1	62,280	4,737	7.61	9.51	1,463	0	0.00	NO	-
Warrick	307.05	2	62,280	4,737	7.61	9.51	2,880	715	24.83	YES	-
Warrick	307.05	3	62,280	4,737	7.61	9.51	2,474	302	12.21	YES	-
Warrick	307.05	4	62,280	4,737	7.61	9.51	2,266	292	12.89	YES	-
Warrick	308	1	62,280	4,737	7.61	9.51	671	147	21.91	YES	-
Warrick	308	2	62,280	4,737	7.61	9.51	2,257	50	2.22	NO	-
Warrick	308	3	62,280	4,737	7.61	9.51	1,172	155	13.23	YES	-
Warrick	308	4	62,280	4,737	7.61	9.51	838	136	16.23	YES	-



Potential Environmental Justice Impacts – Minority (Table 2)											
			Community of Comparison (County Data)				Affected Community (Block Group)				
County	Census Tract	Block Group	County Total for Minority Estimate	Number of People of Minority Heritage in County	Percent People of Minority Heritage in County	125% of Percent People of Minority Heritage in County	Block Group Total for Minority Estimate	Number of People of Minority Heritage in Block Group	Percent People of Minority Heritage in Block Group	Minority EJ Community?	Alternatives Impacted
Warrick	308	5	62,280	4,737	7.61	9.51	1,725	37	2.14	NO	-



TABLE 3. BREAKDOWN BY RACE – NOT HISPANIC OR LATINO IN BLOCK GROUPS

Block Groups Breakdown by Minority – Not Hispanic or Latino (Table 3)													
County	Census Tract	Block Group	Not Hispanic or Latino: White alone	Not Hispanic or Latino: Black or African American alone	Not Hispanic or Latino: American Indian and Alaska Native alone	Not Hispanic or Latino: Asian alone	Not Hispanic or Latino: Native Hawaiian & Other Pacific Islander alone	Not Hispanic or Latino: Some other race alone	Not Hispanic or Latino: Two or more races	Not Hispanic or Latino: Two races including some other race	Not Hispanic or Latino: Two races excluding Some other race, and three or more races	Minority EJ Community?	Alternatives Impacted
Crawford	9519	1	1,305	2	0	0	0	0	65	0	65	YES	-
Crawford	9519	2	1,135	25	0	0	0	10	55	0	55	YES	-
Crawford	9519	3	1,071	0	0	0	0	0	0	0	0	NO	-
Crawford	9520	1	1,112	0	0	0	0	0	37	0	37	YES	-
Crawford	9520	2	1,304	0	0	0	0	0	0	0	0	NO	-
Crawford	9520	3	1,653	4	0	0	0	0	18	0	18	NO	-
Crawford	9521	1	1,091	10	0	0	0	0	12	0	12	NO	-
Crawford	9521	2	908	0	9	0	0	0	9	0	9	YES	-
Crawford	9521	3	572	0	0	0	0	0	4	0	4	NO	-
Daviess	9543	1	984	0	0	0	0	0	22	0	22	NO	P, RPA P, R
Daviess	9543	2	1,061	0	0	42	0	0	17	0	17	NO	-
Daviess	9543	3	515	8	0	0	0	0	8	0	8	NO	-
Daviess	9543	4	806	0	0	40	0	0	22	0	22	NO	P, RPA P, R
Daviess	9543	5	613	6	0	7	0	0	13	0	13	NO	-
Daviess	9544	1	531	5	0	0	0	0	0	0	0	NO	-
Daviess	9544	2	736	17	0	0	0	0	10	0	10	NO	-
Daviess	9544	3	1,233	32	0	0	0	0	0	0	0	NO	-
Daviess	9545	1	1,897	0	0	0	0	0	0	0	0	NO	P, RPA P, R
Daviess	9545	2	3,979	0	0	0	0	0	0	0	0	NO	P, RPA P
Daviess	9545	3	1,585	0	0	0	0	0	0	0	0	NO	C
Daviess	9545	4	1,789	0	0	0	0	0	0	0	0	NO	P, RPA P
Daviess	9545	5	755	0	0	0	0	0	0	0	0	NO	B, C
Daviess	9546	1	1,363	0	0	0	0	0	0	0	0	NO	B, C
Daviess	9546	2	737	0	0	0	0	0	0	0	0	NO	-
Daviess	9546	3	510	0	0	0	0	0	32	0	32	NO	-



Block Groups Breakdown by Minority – Not Hispanic or Latino (Table 3)													
County	Census Tract	Block Group	Not Hispanic or Latino: White alone	Not Hispanic or Latino: Black or African American alone	Not Hispanic or Latino: American Indian and Alaska Native alone	Not Hispanic or Latino: Asian alone	Not Hispanic or Latino: Native Hawaiian & Other Pacific Islander alone	Not Hispanic or Latino: Some other race alone	Not Hispanic or Latino: Two or more races	Not Hispanic or Latino: Two races including some other race	Not Hispanic or Latino: Two races excluding Some other race, and three or more races	Minority EJ Community?	Alternatives Impacted
Daviess	9546	4	1,346	0	0	0	0	0	22	0	22	NO	B, C-
Daviess	9547	1	1,100	122	0	0	0	0	21	0	21	YES	-
Daviess	9547	2	761	98	0	0	0	0	72	0	72	YES	-
Daviess	9547	3	491	0	0	0	0	0	33	0	33	YES	-
Daviess	9547	4	310	212	0	0	0	0	0	0	0	YES	-
Daviess	9548	1	1,106	41	0	0	0	0	0	0	0	NO	-
Daviess	9548	2	636	31	0	0	0	0	0	0	0	YES	-
Daviess	9548	3	601	0	0	0	0	0	0	0	0	NO	-
Daviess	9548	4	451	51	0	0	0	12	48	0	48	YES	-
Daviess	9549	1	909	0	0	0	0	0	0	0	0	NO	-
Daviess	9549	2	1,039	15	0	0	0	0	63	0	63	NO	-
Daviess	9549	3	1,161	0	0	0	15	0	0	0	0	NO	-
Daviess	9549	4	1,319	0	13	0	0	0	0	0	0	NO	-
Dubois	9532	1	1,257	3	0	0	0	0	0	0	0	NO	B, C, M, P, RPA P, R-
Dubois	9532	2	1,756	0	0	0	0	0	0	0	0	NO	B,-
Dubois	9532	3	2,643	0	0	0	0	0	0	0	0	NO	B, R-
Dubois	9532	4	869	0	0	0	0	0	0	0	0	YES	B, R
Dubois	9533	1	2,355	26	0	115	0	0	12	0	12	YES	R-
Dubois	9533	2	1,658	0	0	0	0	0	0	0	0	NO	R-
Dubois	9533	3	1,679	0	0	0	0	0	0	0	0	NO	R-
Dubois	9533	4	783	0	0	0	0	0	0	0	0	NO	R-
Dubois	9534	1	1,500	0	0	0	0	17	0	0	0	YES	R-
Dubois	9534	2	858	0	0	0	0	0	0	0	0	NO	R-
Dubois	9534	3	532	0	0	0	0	0	0	0	0	YES	R-
Dubois	9534	4	2,106	24	0	0	0	0	5	0	5	YES	R-
Dubois	9535	1	613	0	0	0	0	0	113	0	113	YES	C, M, O, P, RPA P, R
Dubois	9535	2	619	65	0	0	0	0	0	0	0	YES	O



Block Groups Breakdown by Minority – Not Hispanic or Latino (Table 3)

County	Census Tract	Block Group	Not Hispanic or Latino: White alone	Not Hispanic or Latino: Black or African American alone	Not Hispanic or Latino: American Indian and Alaska Native alone	Not Hispanic or Latino: Asian alone	Not Hispanic or Latino: Native Hawaiian & Other Pacific Islander alone	Not Hispanic or Latino: Some other race alone	Not Hispanic or Latino: Two or more races	Not Hispanic or Latino: Two races including some other race	Not Hispanic or Latino: Two races excluding Some other race, and three or more races	Minority EJ Community?	Alternatives Impacted
Dubois	9535	3	612	0	0	0	0	0	0	0	0	NO	C, M, O, P, RPA P-
Dubois	9535	4	1,087	31	0	0	0	0	27	0	27	YES	C, M, O, P, RPA P
Dubois	9535	5	1,508	1	0	0	0	0	2	0	2	YES	C, M, O, P, RPA P, R
Dubois	9536	1	972	0	0	0	0	0	0	0	0	YES	O
Dubois	9536	2	1,919	0	0	0	0	0	0	0	0	NO	-
Dubois	9536	3	810	0	0	0	0	0	6	0	6	NO	-
Dubois	9536	4	1,527	0	0	15	0	0	0	0	0	NO	-
Dubois	9537	1	908	0	0	6	0	0	0	0	0	NO	-
Dubois	9537	2	1,800	15	0	0	0	0	15	0	15	YES	B, C, M, O, P, RPA P, R
Dubois	9537	3	1,478	7	0	0	0	0	0	0	0	YES	C, M, O, P, RPA P
Dubois	9537	4	2,915	0	0	0	0	0	5	0	5	NO	-
Dubois	9538	1	355	0	0	0	0	0	0	0	0	YES	R-
Dubois	9538	2	1,131	0	0	0	0	0	58	0	58	YES	R-
Dubois	9538	3	243	0	0	163	0	0	0	0	0	YES	R-
Dubois	9538	4	1,056	0	0	1	0	0	0	0	0	YES	C, M, O, P, RPA P, R
Dubois	9538	5	829	104	0	0	0	0	0	0	0	YES	R-
Greene	9547.01	1	695	0	0	0	0	0	0	0	0	NO	-
Greene	9547.01	2	1,171	16	0	0	0	0	6	0	6	NO	-
Greene	9547.01	3	1,098	0	0	20	0	0	15	0	15	NO	-
Greene	9547.01	4	1,629	0	0	0	0	0	35	0	35	NO	-
Greene	9547.02	1	1,309	0	0	0	0	0	0	0	0	NO	-
Greene	9547.02	2	2,225	0	0	0	0	0	14	0	14	NO	-
Greene	9548	1	1,182	0	0	0	0	0	0	0	0	NO	-



Block Groups Breakdown by Minority – Not Hispanic or Latino (Table 3)													
County	Census Tract	Block Group	Not Hispanic or Latino: White alone	Not Hispanic or Latino: Black or African American alone	Not Hispanic or Latino: American Indian and Alaska Native alone	Not Hispanic or Latino: Asian alone	Not Hispanic or Latino: Native Hawaiian & Other Pacific Islander alone	Not Hispanic or Latino: Some other race alone	Not Hispanic or Latino: Two or more races	Not Hispanic or Latino: Two races including some other race	Not Hispanic or Latino: Two races excluding Some other race, and three or more races	Minority EJ Community?	Alternatives Impacted
Greene	9548	2	535	2	0	0	0	0	0	0	0	YES	-
Greene	9548	3	718	0	0	3	0	0	0	0	0	NO	-
Greene	9548	4	1,112	0	0	0	0	0	0	0	0	NO	-
Greene	9549	1	855	0	0	0	0	0	0	0	0	NO	-
Greene	9549	2	1,657	0	0	0	0	0	0	0	0	NO	-
Greene	9549	3	1,692	7	0	18	0	0	0	0	0	YES	-
Greene	9549	4	467	2	0	0	0	0	21	0	21	YES	-
Greene	9550	1	814	31	0	0	0	0	45	0	45	YES	-
Greene	9550	2	961	0	0	0	0	0	18	0	18	NO	-
Greene	9550	3	955	0	0	0	0	0	0	0	0	YES	-
Greene	9551	1	689	0	0	0	0	0	22	0	22	NO	-
Greene	9551	2	739	0	0	0	0	0	0	0	0	NO	-
Greene	9551	3	860	0	0	0	0	0	24	0	24	NO	-
Greene	9551	4	436	0	0	0	17	0	30	0	30	YES	-
Greene	9552	1	704	0	0	0	0	0	0	0	0	NO	-
Greene	9552	2	942	0	0	0	0	0	0	0	0	YES	-
Greene	9552	3	429	0	0	0	0	0	0	0	0	YES	-
Greene	9553	1	1,022	0	0	0	0	0	0	0	0	NO	-
Greene	9553	2	735	0	10	0	0	0	142	0	142	YES	P, RPA P, R
Greene	9553	3	939	8	0	0	0	0	19	0	19	NO	-
Greene	9553	4	653	1	0	13	0	0	0	0	0	NO	-
Greene	9553	5	641	0	0	5	0	0	0	0	0	NO	-
Greene	9554	1	911	39	0	0	0	0	0	0	0	YES	-
Greene	9554	2	876	4	0	5	0	0	0	0	0	NO	-
Greene	9554	3	615	3	0	0	0	0	14	0	14	NO	-
Greene	9554	4	805	0	0	0	0	0	11	0	11	NO	-
Lawrence	9504	1	1,484	0	0	0	0	0	0	0	0	NO	-
Lawrence	9504	2	1,080	14	0	0	0	0	77	0	77	YES	-
Lawrence	9504	3	1,000	0	0	0	0	0	52	0	52	YES	-



Block Groups Breakdown by Minority – Not Hispanic or Latino (Table 3)

County	Census Tract	Block Group	Not Hispanic or Latino: White alone	Not Hispanic or Latino: Black or African American alone	Not Hispanic or Latino: American Indian and Alaska Native alone	Not Hispanic or Latino: Asian alone	Not Hispanic or Latino: Native Hawaiian & Other Pacific Islander alone	Not Hispanic or Latino: Some other race alone	Not Hispanic or Latino: Two or more races	Not Hispanic or Latino: Two races including some other race	Not Hispanic or Latino: Two races excluding Some other race, and three or more races	Minority EJ Community?	Alternatives Impacted
Lawrence	9505	1	1,004	0	0	0	0	0	0	0	0	NO	-
Lawrence	9505	2	1,313	0	0	30	0	0	0	0	0	YES	-
Lawrence	9505	3	1,536	0	0	0	0	0	0	0	0	NO	-
Lawrence	9505	4	584	0	0	0	0	0	0	0	0	NO	-
Lawrence	9506	1	1,699	0	0	0	0	0	0	0	0	NO	-
Lawrence	9506	2	1,392	0	49	0	0	0	0	0	0	NO	-
Lawrence	9506	3	2,363	0	0	20	0	0	0	0	0	NO	-
Lawrence	9506	4	813	0	0	7	0	0	15	12	3	NO	M
Lawrence	9506	5	691	0	0	2	0	0	9	0	9	NO	M-
Lawrence	9507	1	1,681	0	28	0	0	0	16	0	16	NO	M-
Lawrence	9507	2	1,181	0	0	0	0	0	0	0	0	NO	M
Lawrence	9507	3	1,064	14	0	0	0	0	38	0	38	YES	-
Lawrence	9507	4	1,399	16	0	0	0	13	27	0	27	NO	O-
Lawrence	9507	5	1,388	0	0	0	0	0	0	0	0	NO	-
Lawrence	9508	1	1,032	0	0	0	0	0	8	0	8	YES	-
Lawrence	9508	2	999	0	0	0	0	0	0	0	0	NO	-
Lawrence	9508	3	1,624	20	0	0	0	0	39	0	39	NO	-
Lawrence	9509	1	480	0	0	67	0	0	12	0	12	YES	-
Lawrence	9509	2	561	3	0	0	0	0	28	0	28	NO	M
Lawrence	9509	3	786	24	58	0	0	0	11	0	11	YES	-
Lawrence	9509	4	619	0	0	0	0	0	42	0	42	YES	-
Lawrence	9510	1	855	20	0	32	0	0	0	0	0	YES	-
Lawrence	9510	2	785	0	0	0	0	0	0	0	0	NO	-
Lawrence	9510	3	803	0	31	0	0	0	0	0	0	YES	-
Lawrence	9510	4	769	0	0	25	0	0	0	0	0	YES	M
Lawrence	9511	1	534	2	0	0	0	0	76	0	76	YES	-
Lawrence	9511	2	1,047	9	0	9	27	0	55	0	55	YES	-
Lawrence	9511	3	1,116	1	0	0	0	0	5	0	5	NO	-
Lawrence	9512	1	1,479	10	0	0	0	0	26	0	26	NO	-



Block Groups Breakdown by Minority – Not Hispanic or Latino (Table 3)													
County	Census Tract	Block Group	Not Hispanic or Latino: White alone	Not Hispanic or Latino: Black or African American alone	Not Hispanic or Latino: American Indian and Alaska Native alone	Not Hispanic or Latino: Asian alone	Not Hispanic or Latino: Native Hawaiian & Other Pacific Islander alone	Not Hispanic or Latino: Some other race alone	Not Hispanic or Latino: Two or more races	Not Hispanic or Latino: Two races including some other race	Not Hispanic or Latino: Two races excluding Some other race, and three or more races	Minority EJ Community?	Alternatives Impacted
Lawrence	9512	2	3,386	0	60	31	0	0	0	0	0	NO	-
Lawrence	9512	3	1,178	0	0	0	0	0	0	0	0	NO	-
Lawrence	9512	4	870	0	0	0	0	0	0	0	0	NO	-
Lawrence	9513	1	695	26	0	0	0	0	0	0	0	NO	-
Lawrence	9513	2	630	11	0	0	0	0	0	0	0	NO	O-
Lawrence	9513	3	569	0	0	0	0	0	0	0	0	NO	-
Lawrence	9513	4	1,093	10	0	0	0	0	0	0	0	YES	O
Martin	9501	1	767	0	0	8	0	0	1	0	1	NO	P, RPA P, R-
Martin	9501	2	802	0	0	0	0	0	0	0	0	NO	M, P, RPA P-
Martin	9501	3	899	44	0	0	0	0	47	0	47	YES	M
Martin	9502	1	1,137	0	5	10	0	0	7	0	7	NO	RPA P, R-
Martin	9502	2	771	0	4	0	0	0	0	0	0	NO	RPA P, R-
Martin	9502	3	622	3	0	0	0	0	0	0	0	NO	RPA P, R-
Martin	9502	4	1,142	8	0	0	0	0	0	0	0	NO	M, P, RPA P, R
Martin	9503	1	1,228	22	0	0	0	0	0	0	0	NO	M-
Martin	9503	2	753	0	24	0	0	0	2	0	2	NO	-
Martin	9503	3	1,789	0	0	0	0	0	0	0	0	NO	C, M, P, RPA P, R-
Monroe	1	1	1,477	61	0	102	0	17	83	0	83	NO	-
Monroe	1	2	1,721	21	0	111	0	0	16	0	16	NO	-
Monroe	1	3	675	59	0	40	0	0	12	0	12	NO	-
Monroe	2.01	1	856	24	0	104	0	0	19	4	15	NO	-
Monroe	2.01	2	2,696	18	0	141	0	0	17	17	0	NO	-
Monroe	2.01	3	1,460	105	5	1,046	0	12	16	0	16	YES	-
Monroe	2.02	1	2,415	118	0	505	0	0	14	0	14	YES	-
Monroe	2.02	2	2,350	113	0	363	0	0	157	0	157	YES	-
Monroe	3.01	1	733	26	0	0	0	0	20	0	20	NO	-
Monroe	3.01	2	955	85	0	0	0	0	0	0	0	NO	-



Block Groups Breakdown by Minority – Not Hispanic or Latino (Table 3)													
County	Census Tract	Block Group	Not Hispanic or Latino: White alone	Not Hispanic or Latino: Black or African American alone	Not Hispanic or Latino: American Indian and Alaska Native alone	Not Hispanic or Latino: Asian alone	Not Hispanic or Latino: Native Hawaiian & Other Pacific Islander alone	Not Hispanic or Latino: Some other race alone	Not Hispanic or Latino: Two or more races	Not Hispanic or Latino: Two races including some other race	Not Hispanic or Latino: Two races excluding Some other race, and three or more races	Minority EJ Community?	Alternatives Impacted
Monroe	3.01	3	953	58	0	128	0	0	0	0	0	NO	-
Monroe	3.01	4	1,141	17	10	82	0	14	35	0	35	NO	-
Monroe	3.02	1	952	5	0	65	0	0	14	0	14	NO	-
Monroe	3.02	2	764	22	0	45	0	0	8	0	8	NO	-
Monroe	3.02	3	607	28	0	36	8	0	10	0	10	NO	-
Monroe	3.02	4	559	0	0	0	0	0	0	0	0	NO	-
Monroe	4.01	1	1,279	76	13	47	0	0	0	0	0	YES	-
Monroe	4.01	2	624	0	0	0	0	0	0	0	0	NO	-
Monroe	4.01	3	1,514	132	20	71	0	0	21	0	21	NO	-
Monroe	4.02	1	3,585	205	92	261	0	0	136	0	136	NO	-
Monroe	4.02	2	728	76	0	14	0	19	16	0	16	YES	-
Monroe	5.01	1	1,172	25	0	10	0	0	59	0	59	NO	-
Monroe	5.01	2	1,502	458	0	7	0	0	38	0	38	YES	-
Monroe	5.01	3	1,552	40	0	11	0	0	48	0	48	NO	-
Monroe	5.02	1	936	28	0	20	0	0	129	0	129	NO	-
Monroe	5.02	2	478	40	0	7	0	0	53	0	53	YES	-
Monroe	5.02	3	1,138	74	13	26	0	0	54	0	54	YES	-
Monroe	6.01	1	1,110	56	0	112	0	0	145	0	145	YES	-
Monroe	6.01	2	1,931	254	32	36	0	0	164	0	164	YES	-
Monroe	6.02	1	1,967	185	0	249	0	10	212	0	212	YES	-
Monroe	6.02	2	804	43	0	0	0	0	55	0	55	NO	-
Monroe	7	1	1,137	0	0	0	0	0	81	0	81	NO	-
Monroe	7	2	517	0	0	0	0	0	25	0	25	NO	-
Monroe	7	3	1,172	26	0	22	15	0	43	0	43	NO	-
Monroe	8	1	1,179	0	0	18	0	0	0	0	0	NO	-
Monroe	8	2	1,419	18	0	431	0	0	105	0	105	YES	-
Monroe	8	3	712	3	0	50	0	0	14	0	14	NO	-
Monroe	8	4	1,475	47	0	41	0	0	72	9	63	NO	-
Monroe	9.01	1	1,056	50	6	146	0	0	130	0	130	YES	-



Block Groups Breakdown by Minority – Not Hispanic or Latino (Table 3)

County	Census Tract	Block Group	Not Hispanic or Latino: White alone	Not Hispanic or Latino: Black or African American alone	Not Hispanic or Latino: American Indian and Alaska Native alone	Not Hispanic or Latino: Asian alone	Not Hispanic or Latino: Native Hawaiian & Other Pacific Islander alone	Not Hispanic or Latino: Some other race alone	Not Hispanic or Latino: Two or more races	Not Hispanic or Latino: Two races including some other race	Not Hispanic or Latino: Two races excluding Some other race, and three or more races	Minority EJ Community?	Alternatives Impacted
Monroe	9.01	2	1,325	16	0	320	0	0	97	0	97	YES	-
Monroe	9.03	1	1,268	27	0	143	0	0	244	0	244	YES	-
Monroe	9.03	2	589	122	12	67	0	0	38	0	38	YES	-
Monroe	9.03	3	785	0	0	51	0	0	15	0	15	NO	-
Monroe	9.03	4	1,538	95	9	171	0	0	41	0	41	NO	-
Monroe	9.04	1	833	60	0	487	0	0	0	0	0	YES	-
Monroe	9.04	2	549	84	0	979	0	0	56	0	56	YES	-
Monroe	9.04	3	1,713	33	0	474	0	0	19	0	19	YES	-
Monroe	10.01	1	1,956	19	0	156	0	0	0	0	0	NO	-
Monroe	10.01	2	1,631	17	0	201	0	0	0	0	0	NO	-
Monroe	10.01	3	1,173	95	0	95	0	0	15	0	15	NO	-
Monroe	10.02	1	1,093	0	0	99	0	0	31	0	31	NO	-
Monroe	10.02	2	1,178	17	0	373	0	0	79	0	79	YES	-
Monroe	10.02	3	1,109	0	0	38	0	0	0	0	0	NO	-
Monroe	10.02	4	1,648	63	0	29	0	0	45	0	45	NO	-
Monroe	11.01	1	1,207	217	0	0	0	0	10	0	10	YES	-
Monroe	11.01	2	1,193	36	0	33	0	0	18	0	18	NO	-
Monroe	11.01	3	690	141	0	334	0	0	44	0	44	YES	-
Monroe	11.01	4	1,132	84	0	194	0	0	115	0	115	YES	-
Monroe	11.02	1	1,823	42	0	0	0	0	45	0	45	NO	-
Monroe	11.02	2	2,202	120	0	353	0	0	113	0	113	YES	-
Monroe	11.03	1	1,168	0	0	0	0	0	52	0	52	NO	-
Monroe	11.03	2	914	0	0	29	0	0	38	0	38	NO	-
Monroe	11.03	3	397	17	0	0	0	0	66	0	66	NO	-
Monroe	12	1	961	0	0	0	0	0	0	0	0	NO	-
Monroe	12	2	987	0	0	0	0	0	0	0	0	NO	-
Monroe	12	3	1,223	56	0	0	0	0	0	0	0	NO	-
Monroe	12	4	601	0	0	0	0	0	0	0	0	NO	-
Monroe	12	5	805	66	26	0	0	0	15	0	15	NO	-



Block Groups Breakdown by Minority – Not Hispanic or Latino (Table 3)

County	Census Tract	Block Group	Not Hispanic or Latino: White alone	Not Hispanic or Latino: Black or African American alone	Not Hispanic or Latino: American Indian and Alaska Native alone	Not Hispanic or Latino: Asian alone	Not Hispanic or Latino: Native Hawaiian & Other Pacific Islander alone	Not Hispanic or Latino: Some other race alone	Not Hispanic or Latino: Two or more races	Not Hispanic or Latino: Two races including some other race	Not Hispanic or Latino: Two races excluding Some other race, and three or more races	Minority EJ Community?	Alternatives Impacted
Monroe	12	6	1,232	0	0	0	0	0	101	0	101	NO	-
Monroe	13.01	1	2,949	0	0	127	0	0	38	0	38	NO	-
Monroe	13.01	2	672	0	0	0	0	0	0	0	0	NO	-
Monroe	13.01	3	477	99	0	9	0	0	22	0	22	YES	-
Monroe	13.01	4	1,312	0	0	0	0	0	41	0	41	NO	-
Monroe	13.03	1	1,547	0	0	0	0	0	0	0	0	NO	-
Monroe	13.03	2	2,717	37	0	0	0	0	80	0	80	NO	-
Monroe	13.03	3	1,635	0	0	29	0	0	106	0	106	NO	-
Monroe	13.04	1	1,239	20	0	0	0	0	0	0	0	NO	-
Monroe	13.04	2	832	0	0	0	0	0	0	0	0	NO	-
Monroe	13.04	3	1,964	0	0	0	0	0	6	0	6	NO	-
Monroe	13.05	1	2,410	0	0	21	0	0	46	0	46	NO	-
Monroe	14.01	1	1,486	6	0	0	0	0	28	0	28	NO	-
Monroe	14.01	2	776	6	0	0	0	0	0	0	0	NO	-
Monroe	14.02	1	744	0	0	0	0	0	0	0	0	NO	-
Monroe	14.02	2	1,101	0	0	0	0	0	0	0	0	NO	-
Monroe	14.02	3	1,360	19	28	14	0	0	63	0	63	NO	-
Monroe	14.02	4	1,012	0	0	0	0	43	87	0	87	NO	-
Monroe	14.02	5	1,057	13	0	17	0	0	44	0	44	NO	-
Monroe	15.01	1	2,077	0	0	35	0	0	151	0	151	NO	-
Monroe	15.01	2	2,147	44	0	28	0	0	112	0	112	NO	-
Monroe	15.01	3	1,232	0	0	0	0	0	187	0	187	NO	-
Monroe	15.02	1	1,468	0	0	9	0	0	27	0	27	NO	-
Monroe	15.02	2	1,249	0	0	8	0	0	46	0	46	NO	-
Monroe	16	1	1,889	82	0	36	0	0	25	0	25	NO	-
Monroe	16	2	1,843	60	0	315	0	0	64	0	64	NO	-
Monroe	16	3	896	22	0	150	0	0	51	0	51	YES	-
Orange	9513	1	1,706	0	0	0	0	0	0	0	0	NO	-
Orange	9513	2	612	0	0	0	0	0	0	0	0	NO	-



Block Groups Breakdown by Minority – Not Hispanic or Latino (Table 3)													
County	Census Tract	Block Group	Not Hispanic or Latino: White alone	Not Hispanic or Latino: Black or African American alone	Not Hispanic or Latino: American Indian and Alaska Native alone	Not Hispanic or Latino: Asian alone	Not Hispanic or Latino: Native Hawaiian & Other Pacific Islander alone	Not Hispanic or Latino: Some other race alone	Not Hispanic or Latino: Two or more races	Not Hispanic or Latino: Two races including some other race	Not Hispanic or Latino: Two races excluding Some other race, and three or more races	Minority EJ Community?	Alternatives Impacted
Orange	9513	3	1,145	0	0	0	0	0	27	0	27	NO	-
Orange	9514	1	1,304	0	0	0	0	0	0	0	0	NO	-
Orange	9514	2	1,066	0	0	0	0	0	0	0	0	NO	O-
Orange	9514	3	976	0	0	0	0	0	0	0	0	NO	O-
Orange	9515	1	908	209	0	0	0	0	37	0	37	YES	O
Orange	9515	2	666	24	7	12	0	0	0	0	0	YES	O
Orange	9515	3	559	33	0	6	0	0	3	0	3	YES	O
Orange	9515	4	381	211	3	7	0	0	53	0	53	YES	-
Orange	9516	1	1,719	0	7	0	0	0	87	0	87	NO	O-
Orange	9516	2	1,442	0	0	0	0	0	0	0	0	NO	-
Orange	9517	1	1,038	12	0	0	0	0	14	0	14	NO	-
Orange	9517	2	508	0	0	0	0	0	0	0	0	NO	-
Orange	9517	3	752	11	0	71	0	0	0	0	0	YES	-
Orange	9517	4	555	0	0	0	0	0	0	0	0	NO	-
Orange	9518	1	940	0	0	0	0	0	0	0	0	NO	-
Orange	9518	2	1,188	0	0	0	0	0	0	0	0	NO	-
Orange	9518	3	1,121	0	0	0	0	0	0	0	0	NO	-
Perry	9522	1	1,031	0	0	0	0	0	0	0	0	NO	-
Perry	9522	2	935	0	0	6	0	0	0	0	0	NO	-
Perry	9522	3	2,073	385	0	0	0	0	6	0	6	YES	-
Perry	9522	4	850	0	0	0	0	0	0	0	0	NO	-
Perry	9523	1	882	0	0	0	0	0	0	0	0	NO	-
Perry	9523	2	1,023	0	0	0	0	0	0	0	0	NO	-
Perry	9523	3	1,284	0	0	4	0	0	59	2	57	NO	-
Perry	9524	1	1,097	4	21	0	0	0	0	0	0	NO	-
Perry	9524	2	866	0	0	0	0	0	0	0	0	NO	-
Perry	9524	3	901	0	0	5	0	2	18	4	14	NO	-
Perry	9524	4	938	8	0	0	0	0	14	0	14	NO	-
Perry	9525	1	942	43	0	34	0	0	15	0	15	YES	-



Block Groups Breakdown by Minority – Not Hispanic or Latino (Table 3)

County	Census Tract	Block Group	Not Hispanic or Latino: White alone	Not Hispanic or Latino: Black or African American alone	Not Hispanic or Latino: American Indian and Alaska Native alone	Not Hispanic or Latino: Asian alone	Not Hispanic or Latino: Native Hawaiian & Other Pacific Islander alone	Not Hispanic or Latino: Some other race alone	Not Hispanic or Latino: Two or more races	Not Hispanic or Latino: Two races including some other race	Not Hispanic or Latino: Two races excluding Some other race, and three or more races	Minority EJ Community?	Alternatives Impacted
Perry	9525	2	862	69	0	0	0	0	0	0	0	YES	-
Perry	9525	3	1,157	0	0	35	0	0	0	0	0	NO	-
Perry	9525	4	1,148	18	20	13	0	9	0	0	0	NO	-
Perry	9526	1	1,036	25	0	0	0	0	0	0	0	NO	-
Perry	9526	2	951	0	0	0	0	0	47	0	47	NO	-
Pike	9539	1	712	0	0	0	0	0	0	0	0	NO	B-
Pike	9539	2	1,152	0	0	0	0	0	0	0	0	NO	-
Pike	9539	3	1,169	56	0	111	0	0	28	0	28	YES	-
Pike	9540	1	655	0	0	0	0	0	16	0	16	NO	-
Pike	9540	2	1,072	19	0	0	0	0	16	0	16	NO	-
Pike	9540	3	1,247	34	0	0	0	0	18	0	18	YES	-
Pike	9541	1	565	0	0	0	0	0	0	0	0	NO	-
Pike	9541	2	1,952	0	0	0	0	0	0	0	0	NO	-
Pike	9541	3	605	0	0	0	0	0	0	0	0	NO	-
Pike	9542	1	627	0	0	0	0	0	0	0	0	NO	-
Pike	9542	2	873	0	0	0	0	0	37	0	37	YES	-
Pike	9542	3	710	0	0	0	0	0	5	5	0	NO	-
Pike	9542	4	584	0	0	0	0	0	0	0	0	NO	-
Spencer	9527	1	1,340	0	0	37	0	0	0	0	0	NO	-
Spencer	9527	2	879	0	0	0	0	0	0	0	0	NO	-
Spencer	9527	3	706	0	0	0	0	0	0	0	0	YES	-
Spencer	9527	4	830	0	0	0	0	0	20	0	20	YES	-
Spencer	9527	5	3,104	25	0	0	0	0	41	0	41	NO	-
Spencer	9528	1	996	0	0	0	0	0	0	0	0	NO	-
Spencer	9528	2	888	0	0	0	0	0	8	0	8	NO	-
Spencer	9528	3	1,222	11	0	0	0	0	42	0	42	NO	-
Spencer	9529	1	808	0	0	0	0	0	0	0	0	NO	-
Spencer	9529	2	837	0	0	0	0	0	6	6	0	NO	-
Spencer	9529	3	1,002	0	0	0	0	0	25	0	25	NO	-



Block Groups Breakdown by Minority – Not Hispanic or Latino (Table 3)													
County	Census Tract	Block Group	Not Hispanic or Latino: White alone	Not Hispanic or Latino: Black or African American alone	Not Hispanic or Latino: American Indian and Alaska Native alone	Not Hispanic or Latino: Asian alone	Not Hispanic or Latino: Native Hawaiian & Other Pacific Islander alone	Not Hispanic or Latino: Some other race alone	Not Hispanic or Latino: Two or more races	Not Hispanic or Latino: Two races including some other race	Not Hispanic or Latino: Two races excluding Some other race, and three or more races	Minority EJ Community?	Alternatives Impacted
Spencer	9530	1	971	0	14	0	0	0	5	0	5	NO	-
Spencer	9530	2	2,032	14	0	18	0	0	0	0	0	NO	-
Spencer	9530	3	739	0	0	0	0	0	0	0	0	NO	-
Spencer	9531	1	478	0	0	0	0	0	13	0	13	YES	-
Spencer	9531	2	2,565	93	16	14	0	0	55	7	48	YES	-
Warrick	301	1	1,144	0	0	0	0	0	0	0	0	NO	-
Warrick	301	2	503	0	0	0	0	0	0	0	0	NO	-
Warrick	301	3	1,091	0	0	26	0	0	0	0	0	NO	-
Warrick	301	4	875	0	0	0	0	0	0	0	0	NO	-
Warrick	302	1	812	3	0	0	0	0	14	0	14	NO	-
Warrick	302	2	968	0	0	0	3	0	0	0	0	NO	-
Warrick	302	3	799	0	0	0	0	0	91	0	91	YES	-
Warrick	302	4	1,188	0	0	0	0	0	12	0	12	NO	-
Warrick	303	1	3,610	53	0	66	0	0	52	0	52	NO	-
Warrick	303	2	1,645	35	23	9	0	0	0	0	0	NO	-
Warrick	304	1	1,271	0	0	0	0	0	31	0	31	NO	-
Warrick	304	2	580	0	0	0	0	0	0	0	0	NO	-
Warrick	304	3	747	2	0	0	0	0	13	0	13	NO	-
Warrick	305	1	1,875	0	0	64	0	19	55	37	18	YES	-
Warrick	305	2	1,701	0	0	0	0	0	82	0	82	NO	-
Warrick	305	3	1,883	8	0	60	0	0	8	0	8	NO	-
Warrick	305	4	880	76	0	0	0	0	56	0	56	YES	-
Warrick	306	1	1,141	11	0	0	0	0	54	0	54	NO	-
Warrick	306	2	846	0	0	0	0	0	0	0	0	NO	-
Warrick	306	3	1,273	0	21	0	0	0	0	0	0	NO	-
Warrick	306	4	506	17	0	0	0	0	0	0	0	NO	-
Warrick	306	5	676	8	0	0	0	0	0	0	0	NO	-
Warrick	306	6	936	0	0	0	0	0	0	0	0	NO	-
Warrick	306	7	682	0	0	0	0	0	20	0	20	NO	-



Block Groups Breakdown by Minority – Not Hispanic or Latino (Table 3)

County	Census Tract	Block Group	Not Hispanic or Latino: White alone	Not Hispanic or Latino: Black or African American alone	Not Hispanic or Latino: American Indian and Alaska Native alone	Not Hispanic or Latino: Asian alone	Not Hispanic or Latino: Native Hawaiian & Other Pacific Islander alone	Not Hispanic or Latino: Some other race alone	Not Hispanic or Latino: Two or more races	Not Hispanic or Latino: Two races including some other race	Not Hispanic or Latino: Two races excluding Some other race, and three or more races	Minority EJ Community?	Alternatives Impacted
Warrick	307.02	1	2,804	6	0	0	0	0	0	0	0	NO	-
Warrick	307.02	2	2,264	181	0	320	0	0	40	0	40	YES	-
Warrick	307.02	3	768	40	0	18	0	0	0	0	0	YES	-
Warrick	307.02	4	393	0	0	0	0	0	0	0	0	NO	-
Warrick	307.03	1	428	0	0	0	0	0	0	0	0	NO	-
Warrick	307.03	2	741	11	0	0	0	0	14	0	14	NO	-
Warrick	307.03	3	1,781	0	0	64	0	0	23	0	23	YES	-
Warrick	307.03	4	2,361	46	34	0	0	0	16	0	16	NO	-
Warrick	307.04	1	1,963	0	17	0	0	0	47	0	47	NO	-
Warrick	307.04	2	2,496	82	0	108	0	0	16	0	16	NO	-
Warrick	307.05	1	1,463	0	0	0	0	0	0	0	0	NO	-
Warrick	307.05	2	2,165	141	0	540	0	0	16	0	16	YES	-
Warrick	307.05	3	2,172	16	0	0	0	0	0	0	0	YES	-
Warrick	307.05	4	1,974	0	0	203	0	0	89	15	74	YES	-
Warrick	308	1	524	147	0	0	0	0	0	0	0	YES	-
Warrick	308	2	2,207	0	0	17	0	0	0	0	0	NO	-
Warrick	308	3	1,017	0	0	155	0	0	0	0	0	YES	-
Warrick	308	4	702	136	0	0	0	0	0	0	0	YES	-
Warrick	308	5	1,688	9	18	10	0	0	0	0	0	NO	-



TABLE 4. BREAKDOWN BY RACE – HISPANIC OR LATINO IN BLOCK GROUPS

Block Groups Breakdown by Minority - Hispanic or Latino (Table 4)														
County	Census Tract	Block Group	Hispanic or Latino: Total	Hispanic or Latino: White alone	Hispanic or Latino: Black or African American alone	Hispanic or Latino: American Indian and Alaska Native alone	Hispanic or Latino: Asian alone	Hispanic or Latino: Native Hawaiian & Other Pacific Islander alone	Hispanic or Latino: Some other race alone	Hispanic or Latino: Two or more races	Hispanic or Latino: Two races including some other race	Hispanic or Latino: Two races excluding Some other race, and three or more races	Minority EJ Community?	Alternatives Impacted
Crawford	9519	1	29	13	0	16	0	0	0	0	0	0	YES	-
Crawford	9519	2	0	0	0	0	0	0	0	0	0	0	YES	-
Crawford	9519	3	22	22	0	0	0	0	0	0	0	0	NO	-
Crawford	9520	1	32	32	0	0	0	0	0	0	0	0	YES	-
Crawford	9520	2	12	0	0	12	0	0	0	0	0	0	NO	-
Crawford	9520	3	22	0	0	0	0	0	0	22	0	22	NO	-
Crawford	9521	1	1	0	0	0	0	0	0	1	0	1	NO	-
Crawford	9521	2	40	40	0	0	0	0	0	0	0	0	YES	-
Crawford	9521	3	0	0	0	0	0	0	0	0	0	0	NO	-
Daviess	9543	1	0	0	0	0	0	0	0	0	0	0	NO	P, RPA P, R
Daviess	9543	2	0	0	0	0	0	0	0	0	0	0	NO	-
Daviess	9543	3	5	5	0	0	0	0	0	0	0	0	NO	-
Daviess	9543	4	0	0	0	0	0	0	0	0	0	0	NO	P, RPA P, R
Daviess	9543	5	3	3	0	0	0	0	0	0	0	0	NO	-
Daviess	9544	1	0	0	0	0	0	0	0	0	0	0	NO	-
Daviess	9544	2	0	0	0	0	0	0	0	0	0	0	NO	-
Daviess	9544	3	0	0	0	0	0	0	0	0	0	0	NO	C
Daviess	9545	1	0	0	0	0	0	0	0	0	0	0	NO	P, RPA P, R
Daviess	9545	2	26	26	0	0	0	0	0	0	0	0	NO	P, RPA P
Daviess	9545	3	8	8	0	0	0	0	0	0	0	0	NO	C
Daviess	9545	4	0	0	0	0	0	0	0	0	0	0	NO	P, RPA P
Daviess	9545	5	0	0	0	0	0	0	0	0	0	0	NO	C
Daviess	9546	1	0	0	0	0	0	0	0	0	0	0	NO	B, C
Daviess	9546	2	40	40	0	0	0	0	0	0	0	0	NO	-
Daviess	9546	3	6	6	0	0	0	0	0	0	0	0	NO	-
Daviess	9546	4	0	0	0	0	0	0	0	0	0	0	NO	B, C



Block Groups Breakdown by Minority - Hispanic or Latino (Table 4)

County	Census Tract	Block Group	Hispanic or Latino: Total	Hispanic or Latino: White alone	Hispanic or Latino: Black or African American alone	Hispanic or Latino: American Indian and Alaska Native alone	Hispanic or Latino: Asian alone	Hispanic or Latino: Native Hawaiian & Other Pacific Islander alone	Hispanic or Latino: Some other race alone	Hispanic or Latino: Two or more races	Hispanic or Latino: Two races including some other race	Hispanic or Latino: Two races excluding Some other race, and three or more races	Minority EJ Community?	Alternatives Impacted
Daviess	9547	1	376	0	0	0	0	0	376	0	0	0	YES	-
Daviess	9547	2	187	173	14	0	0	0	0	0	0	0	YES	-
Daviess	9547	3	147	147	0	0	0	0	0	0	0	0	YES	-
Daviess	9547	4	531	420	0	0	0	0	111	0	0	0	YES	-
Daviess	9548	1	58	58	0	0	0	0	0	0	0	0	NO	-
Daviess	9548	2	54	42	0	0	0	0	12	0	0	0	YES	-
Daviess	9548	3	52	52	0	0	0	0	0	0	0	0	NO	-
Daviess	9548	4	10	10	0	0	0	0	0	0	0	0	YES	-
Daviess	9549	1	68	58	0	0	0	0	10	0	0	0	NO	-
Daviess	9549	2	10	10	0	0	0	0	0	0	0	0	NO	-
Daviess	9549	3	65	65	0	0	0	0	0	0	0	0	NO	-
Daviess	9549	4	0	0	0	0	0	0	0	0	0	0	NO	-
Dubois	9532	1	0	0	0	0	0	0	0	0	0	0	NO	B, C, M, O, P, RPA P, R-
Dubois	9532	2	0	0	0	0	0	0	0	0	0	0	NO	B, -
Dubois	9532	3	0	0	0	0	0	0	0	0	0	0	NO	B, R-
Dubois	9532	4	119	0	0	56	0	0	0	63	0	63	YES	B, R
Dubois	9533	1	654	444	0	0	0	0	175	35	35	0	YES	R-
Dubois	9533	2	0	0	0	0	0	0	0	0	0	0	NO	R-
Dubois	9533	3	2	0	0	0	0	0	0	2	2	0	NO	R-
Dubois	9533	4	0	0	0	0	0	0	0	0	0	0	NO	-R
Dubois	9534	1	41	41	0	0	0	0	0	0	0	0	YES	R-
Dubois	9534	2	0	0	0	0	0	0	0	0	0	0	NO	R-
Dubois	9534	3	12	12	0	0	0	0	0	0	0	0	YES	R-
Dubois	9534	4	292	237	9	0	0	0	46	0	0	0	YES	C, R-
Dubois	9535	1	0	0	0	0	0	0	0	0	0	0	YES	C, M, O, P, RPA P, R
Dubois	9535	2	0	0	0	0	0	0	0	0	0	0	YES	O
Dubois	9535	3	0	0	0	0	0	0	0	0	0	0	NO	C, M, O, P, RPA P-



Block Groups Breakdown by Minority - Hispanic or Latino (Table 4)														
County	Census Tract	Block Group	Hispanic or Latino: Total	Hispanic or Latino: White alone	Hispanic or Latino: Black or African American alone	Hispanic or Latino: American Indian and Alaska Native alone	Hispanic or Latino: Asian alone	Hispanic or Latino: Native Hawaiian & Other Pacific Islander alone	Hispanic or Latino: Some other race alone	Hispanic or Latino: Two or more races	Hispanic or Latino: Two races including some other race	Hispanic or Latino: Two races excluding Some other race, and three or more races	Minority EJ Community?	Alternatives Impacted
Dubois	9535	4	191	176	0	0	0	0	15	0	0	0	YES	C, M, O, P, RPA P
Dubois	9535	5	84	75	0	0	0	0	9	0	0	0	YES	C, M, O, P, RPA P, R
Dubois	9536	1	77	0	0	0	0	0	18	59	59	0	YES	O
Dubois	9536	2	0	0	0	0	0	0	0	0	0	0	NO	-
Dubois	9536	3	5	5	0	0	0	0	0	0	0	0	NO	-
Dubois	9536	4	0	0	0	0	0	0	0	0	0	0	NO	-
Dubois	9537	1	9	9	0	0	0	0	0	0	0	0	NO	-
Dubois	9537	2	26	13	0	0	0	0	13	0	0	0	YES	B, C, M, O, P, RPA P, R
Dubois	9537	3	50	16	0	16	0	0	18	0	0	0	YES	C, M, O, P, RPA P
Dubois	9537	4	3	3	0	0	0	0	0	0	0	0	NO	-
Dubois	9538	1	74	74	0	0	0	0	0	0	0	0	YES	R-
Dubois	9538	2	620	190	0	45	0	0	313	72	0	72	YES	R-
Dubois	9538	3	654	183	286	0	0	0	185	0	0	0	YES	R-
Dubois	9538	4	92	85	0	0	0	0	7	0	0	0	YES	C, M, O, P, RPA P, R
Dubois	9538	5	324	263	0	0	0	0	61	0	0	0	YES	R-
Greene	9547.01	1	0	0	0	0	0	0	0	0	0	0	NO	-
Greene	9547.01	2	0	0	0	0	0	0	0	0	0	0	NO	-
Greene	9547.01	3	0	0	0	0	0	0	0	0	0	0	NO	-
Greene	9547.01	4	21	21	0	0	0	0	0	0	0	0	NO	-
Greene	9547.02	1	5	0	0	0	0	0	0	5	0	5	NO	-
Greene	9547.02	2	0	0	0	0	0	0	0	0	0	0	NO	-
Greene	9548	1	0	0	0	0	0	0	0	0	0	0	NO	-
Greene	9548	2	32	5	0	3	0	0	5	19	19	0	YES	-
Greene	9548	3	8	5	0	0	0	0	3	0	0	0	NO	-
Greene	9548	4	10	10	0	0	0	0	0	0	0	0	NO	-



Block Groups Breakdown by Minority - Hispanic or Latino (Table 4)														
County	Census Tract	Block Group	Hispanic or Latino: Total	Hispanic or Latino: White alone	Hispanic or Latino: Black or African American alone	Hispanic or Latino: American Indian and Alaska Native alone	Hispanic or Latino: Asian alone	Hispanic or Latino: Native Hawaiian & Other Pacific Islander alone	Hispanic or Latino: Some other race alone	Hispanic or Latino: Two or more races	Hispanic or Latino: Two races including some other race	Hispanic or Latino: Two races excluding Some other race, and three or more races	Minority EJ Community?	Alternatives Impacted
Greene	9549	1	0	0	0	0	0	0	0	0	0	0	NO	-
Greene	9549	2	0	0	0	0	0	0	0	0	0	0	NO	-
Greene	9549	3	62	62	0	0	0	0	0	0	0	0	YES	-
Greene	9549	4	4	4	0	0	0	0	0	0	0	0	YES	-
Greene	9550	1	0	0	0	0	0	0	0	0	0	0	YES	-
Greene	9550	2	0	0	0	0	0	0	0	0	0	0	NO	-
Greene	9550	3	53	53	0	0	0	0	0	0	0	0	YES	-
Greene	9551	1	0	0	0	0	0	0	0	0	0	0	NO	-
Greene	9551	2	5	5	0	0	0	0	0	0	0	0	NO	-
Greene	9551	3	0	0	0	0	0	0	0	0	0	0	NO	-
Greene	9551	4	103	103	0	0	0	0	0	0	0	0	YES	-
Greene	9552	1	10	10	0	0	0	0	0	0	0	0	NO	-
Greene	9552	2	48	9	14	0	0	0	25	0	0	0	YES	-
Greene	9552	3	36	0	0	0	0	0	0	36	36	0	YES	-
Greene	9553	1	8	8	0	0	0	0	0	0	0	0	NO	-
Greene	9553	2	0	0	0	0	0	0	0	0	0	0	YES	P, RPA P, R
Greene	9553	3	0	0	0	0	0	0	0	0	0	0	NO	-
Greene	9553	4	9	0	0	0	0	0	9	0	0	0	NO	-
Greene	9553	5	0	0	0	0	0	0	0	0	0	0	NO	-
Greene	9554	1	38	29	0	0	0	0	0	9	0	9	YES	-
Greene	9554	2	16	10	0	0	0	0	6	0	0	0	NO	-
Greene	9554	3	0	0	0	0	0	0	0	0	0	0	NO	-
Greene	9554	4	0	0	0	0	0	0	0	0	0	0	NO	-
Lawrence	9504	1	0	0	0	0	0	0	0	0	0	0	NO	-
Lawrence	9504	2	0	0	0	0	0	0	0	0	0	0	YES	-
Lawrence	9504	3	57	57	0	0	0	0	0	0	0	0	YES	-
Lawrence	9505	1	0	0	0	0	0	0	0	0	0	0	NO	-
Lawrence	9505	2	111	98	0	0	0	0	13	0	0	0	YES	-
Lawrence	9505	3	32	32	0	0	0	0	0	0	0	0	NO	-



Block Groups Breakdown by Minority - Hispanic or Latino (Table 4)														
County	Census Tract	Block Group	Hispanic or Latino: Total	Hispanic or Latino: White alone	Hispanic or Latino: Black or African American alone	Hispanic or Latino: American Indian and Alaska Native alone	Hispanic or Latino: Asian alone	Hispanic or Latino: Native Hawaiian & Other Pacific Islander alone	Hispanic or Latino: Some other race alone	Hispanic or Latino: Two or more races	Hispanic or Latino: Two races including some other race	Hispanic or Latino: Two races excluding Some other race, and three or more races	Minority EJ Community?	Alternatives Impacted
Lawrence	9505	4	0	0	0	0	0	0	0	0	0	0	NO	-
Lawrence	9506	1	0	0	0	0	0	0	0	0	0	0	NO	-
Lawrence	9506	2	21	8	0	0	0	0	13	0	0	0	NO	-
Lawrence	9506	3	0	0	0	0	0	0	0	0	0	0	NO	-
Lawrence	9506	4	23	23	0	0	0	0	0	0	0	0	NO	M
Lawrence	9506	5	9	0	0	0	0	0	7	2	2	0	NO	M-
Lawrence	9507	1	0	0	0	0	0	0	0	0	0	0	NO	M-
Lawrence	9507	2	0	0	0	0	0	0	0	0	0	0	NO	M
Lawrence	9507	3	36	0	0	0	0	0	0	36	36	0	YES	-
Lawrence	9507	4	0	0	0	0	0	0	0	0	0	0	NO	O-
Lawrence	9507	5	0	0	0	0	0	0	0	0	0	0	NO	-
Lawrence	9508	1	91	0	0	0	0	0	0	91	91	0	YES	-
Lawrence	9508	2	9	9	0	0	0	0	0	0	0	0	NO	-
Lawrence	9508	3	0	0	0	0	0	0	0	0	0	0	NO	-
Lawrence	9509	1	17	17	0	0	0	0	0	0	0	0	YES	-
Lawrence	9509	2	0	0	0	0	0	0	0	0	0	0	NO	M
Lawrence	9509	3	8	8	0	0	0	0	0	0	0	0	YES	-
Lawrence	9509	4	15	15	0	0	0	0	0	0	0	0	YES	-
Lawrence	9510	1	6	6	0	0	0	0	0	0	0	0	YES	-
Lawrence	9510	2	0	0	0	0	0	0	0	0	0	0	NO	-
Lawrence	9510	3	21	21	0	0	0	0	0	0	0	0	YES	-
Lawrence	9510	4	27	0	0	27	0	0	0	0	0	0	YES	M
Lawrence	9511	1	37	37	0	0	0	0	0	0	0	0	YES	-
Lawrence	9511	2	41	41	0	0	0	0	0	0	0	0	YES	-
Lawrence	9511	3	10	0	0	0	0	0	10	0	0	0	NO	-
Lawrence	9512	1	0	0	0	0	0	0	0	0	0	0	NO	-
Lawrence	9512	2	79	0	0	0	0	0	0	79	79	0	NO	-
Lawrence	9512	3	0	0	0	0	0	0	0	0	0	0	NO	-
Lawrence	9512	4	0	0	0	0	0	0	0	0	0	0	NO	-



Block Groups Breakdown by Minority - Hispanic or Latino (Table 4)														
County	Census Tract	Block Group	Hispanic or Latino: Total	Hispanic or Latino: White alone	Hispanic or Latino: Black or African American alone	Hispanic or Latino: American Indian and Alaska Native alone	Hispanic or Latino: Asian alone	Hispanic or Latino: Native Hawaiian & Other Pacific Islander alone	Hispanic or Latino: Some other race alone	Hispanic or Latino: Two or more races	Hispanic or Latino: Two races including some other race	Hispanic or Latino: Two races excluding Some other race, and three or more races	Minority EJ Community?	Alternatives Impacted
Lawrence	9513	1	0	0	0	0	0	0	0	0	0	0	NO	-
Lawrence	9513	2	0	0	0	0	0	0	0	0	0	0	NO	O-
Lawrence	9513	3	0	0	0	0	0	0	0	0	0	0	NO	-
Lawrence	9513	4	111	0	0	0	0	111	0	0	0	0	YES	O
Martin	9501	1	2	0	0	0	0	2	0	0	0	0	NO	P, RPA P, R-
Martin	9501	2	0	0	0	0	0	0	0	0	0	0	NO	M, P, RPA P-
Martin	9501	3	74	74	0	0	0	0	0	0	0	0	YES	M
Martin	9502	1	4	4	0	0	0	0	0	0	0	0	NO	P, RPA P, R-
Martin	9502	2	3	3	0	0	0	0	0	0	0	0	NO	RPA P, R-
Martin	9502	3	0	0	0	0	0	0	0	0	0	0	NO	RPA P, R-
Martin	9502	4	0	0	0	0	0	0	0	0	0	0	NO	M, P, RPA P, R
Martin	9503	1	0	0	0	0	0	0	0	0	0	0	NO	M-
Martin	9503	2	0	0	0	0	0	0	0	0	0	0	NO	-
Martin	9503	3	34	34	0	0	0	0	0	0	0	0	NO	C, M, P, RPA P, R-
Monroe	1	1	17	17	0	0	0	0	0	0	0	0	NO	-
Monroe	1	2	60	41	0	0	0	0	0	19	0	19	NO	-
Monroe	1	3	34	34	0	0	0	0	0	0	0	0	NO	-
Monroe	2.01	1	43	37	0	0	0	0	0	6	0	6	NO	-
Monroe	2.01	2	148	112	0	0	0	0	18	18	0	18	NO	-
Monroe	2.01	3	66	66	0	0	0	0	0	0	0	0	YES	-
Monroe	2.02	1	185	152	0	0	0	0	13	20	0	20	YES	-
Monroe	2.02	2	270	223	0	0	0	0	32	15	0	15	YES	-
Monroe	3.01	1	44	44	0	0	0	0	0	0	0	0	NO	-
Monroe	3.01	2	23	10	0	0	0	0	13	0	0	0	NO	-
Monroe	3.01	3	17	17	0	0	0	0	0	0	0	0	NO	-
Monroe	3.01	4	0	0	0	0	0	0	0	0	0	0	NO	-
Monroe	3.02	1	39	29	0	0	0	0	0	10	0	10	NO	-
Monroe	3.02	2	0	0	0	0	0	0	0	0	0	0	NO	-



Block Groups Breakdown by Minority - Hispanic or Latino (Table 4)

County	Census Tract	Block Group	Hispanic or Latino: Total	Hispanic or Latino: White alone	Hispanic or Latino: Black or African American alone	Hispanic or Latino: American Indian and Alaska Native alone	Hispanic or Latino: Asian alone	Hispanic or Latino: Native Hawaiian & Other Pacific Islander alone	Hispanic or Latino: Some other race alone	Hispanic or Latino: Two or more races	Hispanic or Latino: Two races including some other race	Hispanic or Latino: Two races excluding Some other race, and three or more races	Minority EJ Community?	Alternatives Impacted
Monroe	3.02	3	19	19	0	0	0	0	0	0	0	0	NO	-
Monroe	3.02	4	0	0	0	0	0	0	0	0	0	0	NO	-
Monroe	4.01	1	199	196	0	0	0	0	0	3	0	3	YES	-
Monroe	4.01	2	87	87	0	0	0	0	0	0	0	0	NO	-
Monroe	4.01	3	101	73	11	0	0	0	17	0	0	0	NO	-
Monroe	4.02	1	222	194	0	0	0	0	20	8	8	0	NO	-
Monroe	4.02	2	84	84	0	0	0	0	0	0	0	0	YES	-
Monroe	5.01	1	24	5	0	0	0	0	19	0	0	0	NO	-
Monroe	5.01	2	17	17	0	0	0	0	0	0	0	0	YES	-
Monroe	5.01	3	85	0	0	0	0	0	46	39	0	39	NO	-
Monroe	5.02	1	0	0	0	0	0	0	0	0	0	0	NO	-
Monroe	5.02	2	132	41	0	0	0	0	85	6	6	0	YES	-
Monroe	5.02	3	152	63	0	0	0	0	0	89	0	89	YES	-
Monroe	6.01	1	18	12	0	0	0	0	6	0	0	0	YES	-
Monroe	6.01	2	84	69	0	0	0	0	15	0	0	0	YES	-
Monroe	6.02	1	107	44	21	0	0	0	9	33	0	33	YES	-
Monroe	6.02	2	44	34	0	0	0	0	0	10	0	10	NO	-
Monroe	7	1	53	53	0	0	0	0	0	0	0	0	NO	-
Monroe	7	2	32	32	0	0	0	0	0	0	0	0	NO	-
Monroe	7	3	51	17	0	0	0	0	34	0	0	0	NO	-
Monroe	8	1	16	16	0	0	0	0	0	0	0	0	NO	-
Monroe	8	2	76	76	0	0	0	0	0	0	0	0	YES	-
Monroe	8	3	52	36	0	0	0	0	16	0	0	0	NO	-
Monroe	8	4	181	180	0	0	0	0	1	0	0	0	NO	-
Monroe	9.01	1	64	64	0	0	0	0	0	0	0	0	YES	-
Monroe	9.01	2	74	21	0	0	0	0	53	0	0	0	YES	-
Monroe	9.03	1	0	0	0	0	0	0	0	0	0	0	YES	-
Monroe	9.03	2	17	7	0	0	0	0	10	0	0	0	YES	-
Monroe	9.03	3	48	48	0	0	0	0	0	0	0	0	NO	-



Block Groups Breakdown by Minority - Hispanic or Latino (Table 4)														
County	Census Tract	Block Group	Hispanic or Latino: Total	Hispanic or Latino: White alone	Hispanic or Latino: Black or African American alone	Hispanic or Latino: American Indian and Alaska Native alone	Hispanic or Latino: Asian alone	Hispanic or Latino: Native Hawaiian & Other Pacific Islander alone	Hispanic or Latino: Some other race alone	Hispanic or Latino: Two or more races	Hispanic or Latino: Two races including some other race	Hispanic or Latino: Two races excluding Some other race, and three or more races	Minority EJ Community?	Alternatives Impacted
Monroe	9.03	4	64	64	0	0	0	0	0	0	0	0	NO	-
Monroe	9.04	1	15	15	0	0	0	0	0	0	0	0	YES	-
Monroe	9.04	2	49	49	0	0	0	0	0	0	0	0	YES	-
Monroe	9.04	3	19	14	0	0	0	0	5	0	0	0	YES	-
Monroe	10.01	1	74	32	0	0	0	0	42	0	0	0	NO	-
Monroe	10.01	2	0	0	0	0	0	0	0	0	0	0	NO	-
Monroe	10.01	3	0	0	0	0	0	0	0	0	0	0	NO	-
Monroe	10.02	1	96	32	0	64	0	0	0	0	0	0	NO	-
Monroe	10.02	2	98	98	0	0	0	0	0	0	0	0	YES	-
Monroe	10.02	3	97	97	0	0	0	0	0	0	0	0	NO	-
Monroe	10.02	4	33	33	0	0	0	0	0	0	0	0	NO	-
Monroe	11.01	1	275	275	0	0	0	0	0	0	0	0	YES	-
Monroe	11.01	2	183	29	0	0	13	0	0	141	80	61	NO	-
Monroe	11.01	3	0	0	0	0	0	0	0	0	0	0	YES	-
Monroe	11.01	4	53	53	0	0	0	0	0	0	0	0	YES	-
Monroe	11.02	1	50	46	0	0	0	0	0	4	4	0	NO	-
Monroe	11.02	2	185	117	6	0	0	0	0	62	0	62	YES	-
Monroe	11.03	1	0	0	0	0	0	0	0	0	0	0	NO	-
Monroe	11.03	2	39	39	0	0	0	0	0	0	0	0	NO	-
Monroe	11.03	3	0	0	0	0	0	0	0	0	0	0	NO	-
Monroe	12	1	0	0	0	0	0	0	0	0	0	0	NO	-
Monroe	12	2	10	10	0	0	0	0	0	0	0	0	NO	-
Monroe	12	3	0	0	0	0	0	0	0	0	0	0	NO	-
Monroe	12	4	30	30	0	0	0	0	0	0	0	0	NO	-
Monroe	12	5	0	0	0	0	0	0	0	0	0	0	NO	-
Monroe	12	6	78	78	0	0	0	0	0	0	0	0	NO	-
Monroe	13.01	1	10	10	0	0	0	0	0	0	0	0	NO	-
Monroe	13.01	2	0	0	0	0	0	0	0	0	0	0	NO	-
Monroe	13.01	3	0	0	0	0	0	0	0	0	0	0	YES	-



Block Groups Breakdown by Minority - Hispanic or Latino (Table 4)

County	Census Tract	Block Group	Hispanic or Latino: Total	Hispanic or Latino: White alone	Hispanic or Latino: Black or African American alone	Hispanic or Latino: American Indian and Alaska Native alone	Hispanic or Latino: Asian alone	Hispanic or Latino: Native Hawaiian & Other Pacific Islander alone	Hispanic or Latino: Some other race alone	Hispanic or Latino: Two or more races	Hispanic or Latino: Two races including some other race	Hispanic or Latino: Two races excluding Some other race, and three or more races	Minority EJ Community?	Alternatives Impacted
Monroe	13.01	4	0	0	0	0	0	0	0	0	0	0	NO	-
Monroe	13.03	1	0	0	0	0	0	0	0	0	0	0	NO	-
Monroe	13.03	2	0	0	0	0	0	0	0	0	0	0	NO	-
Monroe	13.03	3	0	0	0	0	0	0	0	0	0	0	NO	-
Monroe	13.04	1	7	7	0	0	0	0	0	0	0	0	NO	-
Monroe	13.04	2	0	0	0	0	0	0	0	0	0	0	NO	-
Monroe	13.04	3	21	21	0	0	0	0	0	0	0	0	NO	-
Monroe	13.05	1	12	12	0	0	0	0	0	0	0	0	NO	-
Monroe	14.01	1	36	0	0	0	0	0	36	0	0	0	NO	-
Monroe	14.01	2	0	0	0	0	0	0	0	0	0	0	NO	-
Monroe	14.02	1	31	31	0	0	0	0	0	0	0	0	NO	-
Monroe	14.02	2	0	0	0	0	0	0	0	0	0	0	NO	-
Monroe	14.02	3	0	0	0	0	0	0	0	0	0	0	NO	-
Monroe	14.02	4	21	0	0	0	0	0	21	0	0	0	NO	-
Monroe	14.02	5	29	0	0	0	0	0	29	0	0	0	NO	-
Monroe	15.01	1	67	67	0	0	0	0	0	0	0	0	NO	-
Monroe	15.01	2	14	14	0	0	0	0	0	0	0	0	NO	-
Monroe	15.01	3	15	15	0	0	0	0	0	0	0	0	NO	-
Monroe	15.02	1	24	8	0	0	0	0	16	0	0	0	NO	-
Monroe	15.02	2	60	0	0	0	0	0	60	0	0	0	NO	-
Monroe	16	1	141	128	0	0	0	0	13	0	0	0	NO	-
Monroe	16	2	19	19	0	0	0	0	0	0	0	0	NO	-
Monroe	16	3	58	58	0	0	0	0	0	0	0	0	YES	-
Orange	9513	1	18	18	0	0	0	0	0	0	0	0	NO	-
Orange	9513	2	0	0	0	0	0	0	0	0	0	0	NO	-
Orange	9513	3	32	0	0	0	0	0	32	0	0	0	NO	-
Orange	9514	1	0	0	0	0	0	0	0	0	0	0	NO	-
Orange	9514	2	0	0	0	0	0	0	0	0	0	0	NO	O-
Orange	9514	3	0	0	0	0	0	0	0	0	0	0	NO	O-



Block Groups Breakdown by Minority - Hispanic or Latino (Table 4)

County	Census Tract	Block Group	Hispanic or Latino: Total	Hispanic or Latino: White alone	Hispanic or Latino: Black or African American alone	Hispanic or Latino: American Indian and Alaska Native alone	Hispanic or Latino: Asian alone	Hispanic or Latino: Native Hawaiian & Other Pacific Islander alone	Hispanic or Latino: Some other race alone	Hispanic or Latino: Two or more races	Hispanic or Latino: Two races including some other race	Hispanic or Latino: Two races excluding Some other race, and three or more races	Minority EJ Community?	Alternatives Impacted
Orange	9515	1	0	0	0	0	0	0	0	0	0	0	YES	O
Orange	9515	2	12	9	0	0	0	0	3	0	0	0	YES	O
Orange	9515	3	21	20	0	0	0	0	1	0	0	0	YES	O
Orange	9515	4	22	18	0	0	0	0	0	4	4	0	YES	-
Orange	9516	1	0	0	0	0	0	0	0	0	0	0	NO	O-
Orange	9516	2	0	0	0	0	0	0	0	0	0	0	NO	-
Orange	9517	1	0	0	0	0	0	0	0	0	0	0	NO	-
Orange	9517	2	0	0	0	0	0	0	0	0	0	0	NO	-
Orange	9517	3	0	0	0	0	0	0	0	0	0	0	YES	-
Orange	9517	4	3	0	0	0	3	0	0	0	0	0	NO	-
Orange	9518	1	0	0	0	0	0	0	0	0	0	0	NO	-
Orange	9518	2	0	0	0	0	0	0	0	0	0	0	NO	-
Orange	9518	3	17	17	0	0	0	0	0	0	0	0	NO	-
Perry	9522	1	0	0	0	0	0	0	0	0	0	0	NO	-
Perry	9522	2	20	0	0	0	0	0	20	0	0	0	NO	-
Perry	9522	3	38	33	0	0	0	0	5	0	0	0	YES	-
Perry	9522	4	0	0	0	0	0	0	0	0	0	0	NO	-
Perry	9523	1	9	0	0	0	0	0	0	9	9	0	NO	-
Perry	9523	2	0	0	0	0	0	0	0	0	0	0	NO	-
Perry	9523	3	23	23	0	0	0	0	0	0	0	0	NO	-
Perry	9524	1	0	0	0	0	0	0	0	0	0	0	NO	-
Perry	9524	2	25	0	25	0	0	0	0	0	0	0	NO	-
Perry	9524	3	38	19	0	0	0	0	0	19	0	19	NO	-
Perry	9524	4	44	0	0	0	0	0	20	24	0	24	NO	-
Perry	9525	1	14	0	0	0	0	0	14	0	0	0	YES	-
Perry	9525	2	0	0	0	0	0	0	0	0	0	0	YES	-
Perry	9525	3	40	40	0	0	0	0	0	0	0	0	NO	-
Perry	9525	4	0	0	0	0	0	0	0	0	0	0	NO	-
Perry	9526	1	15	0	0	0	0	0	0	15	15	0	NO	-



Block Groups Breakdown by Minority - Hispanic or Latino (Table 4)

County	Census Tract	Block Group	Hispanic or Latino: Total	Hispanic or Latino: White alone	Hispanic or Latino: Black or African American alone	Hispanic or Latino: American Indian and Alaska Native alone	Hispanic or Latino: Asian alone	Hispanic or Latino: Native Hawaiian & Other Pacific Islander alone	Hispanic or Latino: Some other race alone	Hispanic or Latino: Two or more races	Hispanic or Latino: Two races including some other race	Hispanic or Latino: Two races excluding Some other race, and three or more races	Minority EJ Community?	Alternatives Impacted
Perry	9526	2	0	0	0	0	0	0	0	0	0	0	NO	-
Pike	9539	1	0	0	0	0	0	0	0	0	0	0	NO	B-
Pike	9539	2	23	0	0	0	0	0	23	0	0	0	NO	-
Pike	9539	3	0	0	0	0	0	0	0	0	0	0	YES	-
Pike	9540	1	0	0	0	0	0	0	0	0	0	0	NO	-
Pike	9540	2	0	0	0	0	0	0	0	0	0	0	NO	-
Pike	9540	3	10	10	0	0	0	0	0	0	0	0	YES	-
Pike	9541	1	0	0	0	0	0	0	0	0	0	0	NO	-
Pike	9541	2	32	0	0	0	0	0	32	0	0	0	NO	-
Pike	9541	3	0	0	0	0	0	0	0	0	0	0	NO	-
Pike	9542	1	0	0	0	0	0	0	0	0	0	0	NO	-
Pike	9542	2	50	46	0	0	0	0	4	0	0	0	YES	-
Pike	9542	3	0	0	0	0	0	0	0	0	0	0	NO	-
Pike	9542	4	0	0	0	0	0	0	0	0	0	0	NO	-
Spencer	9527	1	0	0	0	0	0	0	0	0	0	0	NO	-
Spencer	9527	2	9	9	0	0	0	0	0	0	0	0	NO	-
Spencer	9527	3	155	137	0	0	0	0	0	18	18	0	YES	-
Spencer	9527	4	222	215	0	0	0	0	7	0	0	0	YES	-
Spencer	9527	5	26	26	0	0	0	0	0	0	0	0	NO	-
Spencer	9528	1	13	13	0	0	0	0	0	0	0	0	NO	-
Spencer	9528	2	0	0	0	0	0	0	0	0	0	0	NO	-
Spencer	9528	3	9	3	0	0	0	0	6	0	0	0	NO	-
Spencer	9529	1	10	0	0	0	0	0	10	0	0	0	NO	-
Spencer	9529	2	20	0	0	1	0	0	19	0	0	0	NO	-
Spencer	9529	3	16	16	0	0	0	0	0	0	0	0	NO	-
Spencer	9530	1	0	0	0	0	0	0	0	0	0	0	NO	-
Spencer	9530	2	0	0	0	0	0	0	0	0	0	0	NO	-
Spencer	9530	3	5	0	0	0	0	0	5	0	0	0	NO	-
Spencer	9531	1	74	55	0	0	0	0	19	0	0	0	YES	-



Block Groups Breakdown by Minority - Hispanic or Latino (Table 4)														
County	Census Tract	Block Group	Hispanic or Latino: Total	Hispanic or Latino: White alone	Hispanic or Latino: Black or African American alone	Hispanic or Latino: American Indian and Alaska Native alone	Hispanic or Latino: Asian alone	Hispanic or Latino: Native Hawaiian & Other Pacific Islander alone	Hispanic or Latino: Some other race alone	Hispanic or Latino: Two or more races	Hispanic or Latino: Two races including some other race	Hispanic or Latino: Two races excluding Some other race, and three or more races	Minority EJ Community?	Alternatives Impacted
Spencer	9531	2	34	34	0	0	0	0	0	0	0	0	YES	-
Warrick	301	1	0	0	0	0	0	0	0	0	0	0	NO	-
Warrick	301	2	0	0	0	0	0	0	0	0	0	0	NO	-
Warrick	301	3	0	0	0	0	0	0	0	0	0	0	NO	-
Warrick	301	4	0	0	0	0	0	0	0	0	0	0	NO	-
Warrick	302	1	2	0	0	0	0	0	2	0	0	0	NO	-
Warrick	302	2	0	0	0	0	0	0	0	0	0	0	NO	-
Warrick	302	3	0	0	0	0	0	0	0	0	0	0	YES	-
Warrick	302	4	0	0	0	0	0	0	0	0	0	0	NO	-
Warrick	303	1	0	0	0	0	0	0	0	0	0	0	NO	-
Warrick	303	2	7	0	0	0	0	0	0	7	0	7	NO	-
Warrick	304	1	0	0	0	0	0	0	0	0	0	0	NO	-
Warrick	304	2	0	0	0	0	0	0	0	0	0	0	NO	-
Warrick	304	3	0	0	0	0	0	0	0	0	0	0	NO	-
Warrick	305	1	216	6	0	0	0	0	210	0	0	0	YES	-
Warrick	305	2	0	0	0	0	0	0	0	0	0	0	NO	-
Warrick	305	3	14	14	0	0	0	0	0	0	0	0	NO	-
Warrick	305	4	0	0	0	0	0	0	0	0	0	0	YES	-
Warrick	306	1	0	0	0	0	0	0	0	0	0	0	NO	-
Warrick	306	2	0	0	0	0	0	0	0	0	0	0	NO	-
Warrick	306	3	52	52	0	0	0	0	0	0	0	0	NO	-
Warrick	306	4	0	0	0	0	0	0	0	0	0	0	NO	-
Warrick	306	5	7	7	0	0	0	0	0	0	0	0	NO	-
Warrick	306	6	11	11	0	0	0	0	0	0	0	0	NO	-
Warrick	306	7	32	32	0	0	0	0	0	0	0	0	NO	-
Warrick	307.02	1	69	60	0	0	0	0	0	9	9	0	NO	-
Warrick	307.02	2	128	89	0	0	0	0	39	0	0	0	YES	-
Warrick	307.02	3	69	0	0	0	0	0	69	0	0	0	YES	-
Warrick	307.02	4	0	0	0	0	0	0	0	0	0	0	NO	-



Block Groups Breakdown by Minority - Hispanic or Latino (Table 4)														
County	Census Tract	Block Group	Hispanic or Latino: Total	Hispanic or Latino: White alone	Hispanic or Latino: Black or African American alone	Hispanic or Latino: American Indian and Alaska Native alone	Hispanic or Latino: Asian alone	Hispanic or Latino: Native Hawaiian & Other Pacific Islander alone	Hispanic or Latino: Some other race alone	Hispanic or Latino: Two or more races	Hispanic or Latino: Two races including some other race	Hispanic or Latino: Two races excluding Some other race, and three or more races	Minority EJ Community?	Alternatives Impacted
Warrick	307.03	1	12	12	0	0	0	0	0	0	0	0	NO	-
Warrick	307.03	2	0	0	0	0	0	0	0	0	0	0	NO	-
Warrick	307.03	3	104	104	0	0	0	0	0	0	0	0	YES	-
Warrick	307.03	4	26	26	0	0	0	0	0	0	0	0	NO	-
Warrick	307.04	1	34	34	0	0	0	0	0	0	0	0	NO	-
Warrick	307.04	2	45	37	0	0	0	0	8	0	0	0	NO	-
Warrick	307.05	1	0	0	0	0	0	0	0	0	0	0	NO	-
Warrick	307.05	2	18	18	0	0	0	0	0	0	0	0	YES	-
Warrick	307.05	3	286	286	0	0	0	0	0	0	0	0	YES	-
Warrick	307.05	4	0	0	0	0	0	0	0	0	0	0	YES	-
Warrick	308	1	0	0	0	0	0	0	0	0	0	0	YES	-
Warrick	308	2	33	33	0	0	0	0	0	0	0	0	NO	-
Warrick	308	3	0	0	0	0	0	0	0	0	0	0	YES	-
Warrick	308	4	0	0	0	0	0	0	0	0	0	0	YES	-
Warrick	308	5	0	0	0	0	0	0	0	0	0	0	NO	-

TABLE 5. EJ ANALYSIS LOW-INCOME POPULATIONS TOTALS

Potential Environmental Justice Impacts – Low Income (Table 5)											
County	Census Tract	Block Group	Community of Comparison (County Data)				Affected Community (Block Group)			Low Income EJ Community?	Alternatives Impacted
			County Total for Low Income Estimate	Number of People with Income Below Poverty Level in Past 12 Months	Percent of People with Income Below Poverty Level in Past 12 Months	125% of Percent of People of with Income Below Poverty Level	Block Group Total for Low-Income Estimate	Number of People with Income Below Poverty Level in Past 12 Months	Percent of People with Income Below Poverty Level in Past 12 Months		
Crawford	9519	1	10,363	1,858	17.93	22.41	1,376	275	19.99	NO	-
Crawford	9519	2	10,363	1,858	17.93	22.41	1,225	193	15.76	NO	-
Crawford	9519	3	10,363	1,858	17.93	22.41	1,093	129	11.80	NO	-
Crawford	9520	1	10,363	1,858	17.93	22.41	1,144	139	12.15	NO	-
Crawford	9520	2	10,363	1,858	17.93	22.41	1,275	173	13.57	NO	-
Crawford	9520	3	10,363	1,858	17.93	22.41	1,666	452	27.13	YES	-
Crawford	9521	1	10,363	1,858	17.93	22.41	1,053	203	19.28	NO	-
Crawford	9521	2	10,363	1,858	17.93	22.41	955	172	18.01	NO	-
Crawford	9521	3	10,363	1,858	17.93	22.41	576	122	21.18	NO	-
Daviess	9543	1	32,556	3,888	11.94	14.93	1,006	36	3.58	NO	P, RPA P, R
Daviess	9543	2	32,556	3,888	11.94	14.93	1,120	143	12.77	NO	-
Daviess	9543	3	32,556	3,888	11.94	14.93	534	85	15.92	YES	-
Daviess	9543	4	32,556	3,888	11.94	14.93	806	99	12.28	NO	P, RPA P, R
Daviess	9543	5	32,556	3,888	11.94	14.93	629	89	14.15	NO	-
Daviess	9544	1	32,556	3,888	11.94	14.93	534	42	7.87	NO	-
Daviess	9544	2	32,556	3,888	11.94	14.93	763	8	1.05	NO	-
Daviess	9544	3	32,556	3,888	11.94	14.93	1,265	145	11.46	NO	C
Daviess	9545	1	32,556	3,888	11.94	14.93	1,897	0	0.00	NO	P, RPA P, R
Daviess	9545	2	32,556	3,888	11.94	14.93	4,005	351	8.76	NO	P, RPA P
Daviess	9545	3	32,556	3,888	11.94	14.93	1,593	216	13.56	NO	C
Daviess	9545	4	32,556	3,888	11.94	14.93	1,746	167	9.56	NO	P, RPA P
Daviess	9545	5	32,556	3,888	11.94	14.93	754	12	1.59	NO	B, C
Daviess	9546	1	32,556	3,888	11.94	14.93	1,314	207	15.75	YES	B, C
Daviess	9546	2	32,556	3,888	11.94	14.93	710	289	40.70	YES	-
Daviess	9546	3	32,556	3,888	11.94	14.93	548	54	9.85	NO	-



Potential Environmental Justice Impacts – Low Income (Table 5)											
County	Census Tract	Block Group	Community of Comparison (County Data)				Affected Community (Block Group)			Low Income EJ Community?	Alternatives Impacted
			County Total for Low Income Estimate	Number of People with Income Below Poverty Level in Past 12 Months	Percent of People with Income Below Poverty Level in Past 12 Months	125% of Percent People of with Income Below Poverty Level	Block Group Total for Low-Income Estimate	Number of People with Income Below Poverty Level in Past 12 Months	Percent of People with Income Below Poverty Level in Past 12 Months		
Daviess	9546	4	32,556	3,888	11.94	14.93	1,368	31	2.27	NO	B, C-
Daviess	9547	1	32,556	3,888	11.94	14.93	1,619	127	7.84	NO	-
Daviess	9547	2	32,556	3,888	11.94	14.93	1,100	292	26.55	YES	-
Daviess	9547	3	32,556	3,888	11.94	14.93	659	63	9.56	NO	-
Daviess	9547	4	32,556	3,888	11.94	14.93	1,053	221	20.99	YES	-
Daviess	9548	1	32,556	3,888	11.94	14.93	1,192	204	17.11	YES	-
Daviess	9548	2	32,556	3,888	11.94	14.93	587	98	16.70	YES	-
Daviess	9548	3	32,556	3,888	11.94	14.93	653	124	18.99	YES	-
Daviess	9548	4	32,556	3,888	11.94	14.93	572	150	26.22	YES	-
Daviess	9549	1	32,556	3,888	11.94	14.93	969	150	15.48	YES	-
Daviess	9549	2	32,556	3,888	11.94	14.93	1,127	19	1.69	NO	-
Daviess	9549	3	32,556	3,888	11.94	14.93	1,241	352	28.36	YES	-
Daviess	9549	4	32,556	3,888	11.94	14.93	1,192	114	9.56	NO	-
Dubois	9532	1	41,649	3,767	9.04	11.31	1,260	7	0.56	NO	B, C, M, O, P, RPA P, R-
Dubois	9532	2	41,649	3,767	9.04	11.31	1,756	0	0.00	NO	B, R-
Dubois	9532	3	41,649	3,767	9.04	11.31	2,643	322	12.18	YES	B, R-
Dubois	9532	4	41,649	3,767	9.04	11.31	988	0	0.00	NO	B
Dubois	9533	1	41,649	3,767	9.04	11.31	3,162	373	11.80	YES	R-
Dubois	9533	2	41,649	3,767	9.04	11.31	1,591	397	24.95	YES	R-
Dubois	9533	3	41,649	3,767	9.04	11.31	1,377	67	4.87	NO	R-
Dubois	9533	4	41,649	3,767	9.04	11.31	783	22	2.81	NO	R-
Dubois	9534	1	41,649	3,767	9.04	11.31	1,558	43	2.76	NO	R-
Dubois	9534	2	41,649	3,767	9.04	11.31	759	18	2.37	NO	R-
Dubois	9534	3	41,649	3,767	9.04	11.31	544	13	2.39	NO	R-
Dubois	9534	4	41,649	3,767	9.04	11.31	2,181	309	14.17	YES	B, R-
Dubois	9535	1	41,649	3,767	9.04	11.31	726	14	1.93	NO	C, M, O, P, RPA P, R
Dubois	9535	2	41,649	3,767	9.04	11.31	684	90	13.16	YES	O



Potential Environmental Justice Impacts – Low Income (Table 5)											
County	Census Tract	Block Group	Community of Comparison (County Data)				Affected Community (Block Group)			Low Income EJ Community?	Alternatives Impacted
			County Total for Low Income Estimate	Number of People with Income Below Poverty Level in Past 12 Months	Percent of People with Income Below Poverty Level in Past 12 Months	125% of Percent People of with Income Below Poverty Level	Block Group Total for Low-Income Estimate	Number of People with Income Below Poverty Level in Past 12 Months	Percent of People with Income Below Poverty Level in Past 12 Months		
Dubois	9535	3	41,649	3,767	9.04	11.31	612	22	3.59	NO	C, M, O, P, RPA P-
Dubois	9535	4	41,649	3,767	9.04	11.31	1,336	271	20.28	YES	C, M, O, P, RPA P
Dubois	9535	5	41,649	3,767	9.04	11.31	1,595	6	0.38	NO	C, M, O, P, RPA P, R
Dubois	9536	1	41,649	3,767	9.04	11.31	1,049	91	8.67	NO	O
Dubois	9536	2	41,649	3,767	9.04	11.31	1,919	23	1.20	NO	-
Dubois	9536	3	41,649	3,767	9.04	11.31	819	94	11.48	YES	-
Dubois	9536	4	41,649	3,767	9.04	11.31	1,542	144	9.34	NO	-
Dubois	9537	1	41,649	3,767	9.04	11.31	923	128	13.87	YES	-
Dubois	9537	2	41,649	3,767	9.04	11.31	1,856	54	2.91	NO	B, C, M, O, P, RPA P, R
Dubois	9537	3	41,649	3,767	9.04	11.31	1,535	97	6.32	NO	C, M, O, P, RPA P
Dubois	9537	4	41,649	3,767	9.04	11.31	2,827	163	5.77	NO	-
Dubois	9538	1	41,649	3,767	9.04	11.31	429	0	0.00	NO	R-
Dubois	9538	2	41,649	3,767	9.04	11.31	1,729	491	28.40	YES	R-
Dubois	9538	3	41,649	3,767	9.04	11.31	1,060	429	40.47	YES	R-
Dubois	9538	4	41,649	3,767	9.04	11.31	1,149	62	5.40	NO	C, M, O, P, RPA P, R
Dubois	9538	5	41,649	3,767	9.04	11.31	1,257	17	1.35	NO	R-
Greene	9547.01	1	31,730	4,527	14.27	17.83	695	131	18.85	YES	-
Greene	9547.01	2	31,730	4,527	14.27	17.83	1,193	21	1.76	NO	-
Greene	9547.01	3	31,730	4,527	14.27	17.83	1,133	79	6.97	NO	-
Greene	9547.01	4	31,730	4,527	14.27	17.83	1,685	369	21.90	YES	-
Greene	9547.02	1	31,730	4,527	14.27	17.83	1,314	71	5.40	NO	-
Greene	9547.02	2	31,730	4,527	14.27	17.83	2,178	389	17.86	YES	-
Greene	9548	1	31,730	4,527	14.27	17.83	1,182	17	1.44	NO	-
Greene	9548	2	31,730	4,527	14.27	17.83	569	64	11.25	NO	-



Potential Environmental Justice Impacts – Low Income (Table 5)											
County	Census Tract	Block Group	Community of Comparison (County Data)				Affected Community (Block Group)			Low Income EJ Community?	Alternatives Impacted
			County Total for Low Income Estimate	Number of People with Income Below Poverty Level in Past 12 Months	Percent of People with Income Below Poverty Level in Past 12 Months	125% of Percent People of with Income Below Poverty Level	Block Group Total for Low-Income Estimate	Number of People with Income Below Poverty Level in Past 12 Months	Percent of People with Income Below Poverty Level in Past 12 Months		
Greene	9548	3	31,730	4,527	14.27	17.83	729	166	22.77	YES	-
Greene	9548	4	31,730	4,527	14.27	17.83	1,078	204	18.92	YES	-
Greene	9549	1	31,730	4,527	14.27	17.83	855	72	8.42	NO	-
Greene	9549	2	31,730	4,527	14.27	17.83	1,657	16	0.97	NO	-
Greene	9549	3	31,730	4,527	14.27	17.83	1,747	216	12.36	NO	-
Greene	9549	4	31,730	4,527	14.27	17.83	494	180	36.44	YES	-
Greene	9550	1	31,730	4,527	14.27	17.83	865	70	8.09	NO	-
Greene	9550	2	31,730	4,527	14.27	17.83	926	189	20.41	YES	-
Greene	9550	3	31,730	4,527	14.27	17.83	1,008	310	30.75	YES	-
Greene	9551	1	31,730	4,527	14.27	17.83	711	196	27.57	YES	-
Greene	9551	2	31,730	4,527	14.27	17.83	744	107	14.38	NO	-
Greene	9551	3	31,730	4,527	14.27	17.83	876	151	17.24	NO	-
Greene	9551	4	31,730	4,527	14.27	17.83	586	117	19.97	YES	-
Greene	9552	1	31,730	4,527	14.27	17.83	714	321	44.96	YES	-
Greene	9552	2	31,730	4,527	14.27	17.83	981	248	25.28	YES	-
Greene	9552	3	31,730	4,527	14.27	17.83	465	14	3.01	NO	-
Greene	9553	1	31,730	4,527	14.27	17.83	1,030	65	6.31	NO	-
Greene	9553	2	31,730	4,527	14.27	17.83	887	72	8.12	NO	P, RPA P, R
Greene	9553	3	31,730	4,527	14.27	17.83	966	9	0.93	NO	-
Greene	9553	4	31,730	4,527	14.27	17.83	610	209	34.26	YES	-
Greene	9553	5	31,730	4,527	14.27	17.83	646	0	0.00	NO	-
Greene	9554	1	31,730	4,527	14.27	17.83	866	56	6.47	NO	-
Greene	9554	2	31,730	4,527	14.27	17.83	892	139	15.58	NO	-
Greene	9554	3	31,730	4,527	14.27	17.83	632	138	21.84	YES	-
Greene	9554	4	31,730	4,527	14.27	17.83	816	121	14.83	NO	-
Lawrence	9504	1	44,695	5,549	12.42	15.52	1,484	184	12.40	NO	-
Lawrence	9504	2	44,695	5,549	12.42	15.52	1,171	26	2.22	NO	-
Lawrence	9504	3	44,695	5,549	12.42	15.52	1,109	38	3.43	NO	-



Potential Environmental Justice Impacts – Low Income (Table 5)											
County	Census Tract	Block Group	Community of Comparison (County Data)				Affected Community (Block Group)			Low Income EJ Community?	Alternatives Impacted
			County Total for Low Income Estimate	Number of People with Income Below Poverty Level in Past 12 Months	Percent of People with Income Below Poverty Level in Past 12 Months	125% of Percent People of with Income Below Poverty Level	Block Group Total for Low-Income Estimate	Number of People with Income Below Poverty Level in Past 12 Months	Percent of People with Income Below Poverty Level in Past 12 Months		
Lawrence	9505	1	44,695	5,549	12.42	15.52	961	291	30.28	YES	-
Lawrence	9505	2	44,695	5,549	12.42	15.52	1,454	89	6.12	NO	-
Lawrence	9505	3	44,695	5,549	12.42	15.52	1,568	0	0.00	NO	-
Lawrence	9505	4	44,695	5,549	12.42	15.52	584	30	5.14	NO	-
Lawrence	9506	1	44,695	5,549	12.42	15.52	1,699	34	2.00	NO	-
Lawrence	9506	2	44,695	5,549	12.42	15.52	1,462	71	4.86	NO	-
Lawrence	9506	3	44,695	5,549	12.42	15.52	2,367	234	9.89	NO	-
Lawrence	9506	4	44,695	5,549	12.42	15.52	844	170	20.14	YES	M
Lawrence	9506	5	44,695	5,549	12.42	15.52	705	89	12.62	NO	M-
Lawrence	9507	1	44,695	5,549	12.42	15.52	1,710	99	5.79	NO	M-
Lawrence	9507	2	44,695	5,549	12.42	15.52	1,181	384	32.51	YES	M
Lawrence	9507	3	44,695	5,549	12.42	15.52	1,152	160	13.89	NO	-
Lawrence	9507	4	44,695	5,549	12.42	15.52	1,408	178	12.64	NO	O-
Lawrence	9507	5	44,695	5,549	12.42	15.52	1,371	74	5.40	NO	-
Lawrence	9508	1	44,695	5,549	12.42	15.52	1,131	227	20.07	YES	-
Lawrence	9508	2	44,695	5,549	12.42	15.52	848	72	8.49	NO	-
Lawrence	9508	3	44,695	5,549	12.42	15.52	1,548	262	16.93	YES	-
Lawrence	9509	1	44,695	5,549	12.42	15.52	565	161	28.50	YES	-
Lawrence	9509	2	44,695	5,549	12.42	15.52	503	122	24.25	YES	M
Lawrence	9509	3	44,695	5,549	12.42	15.52	887	150	16.91	YES	-
Lawrence	9509	4	44,695	5,549	12.42	15.52	676	145	21.45	YES	-
Lawrence	9510	1	44,695	5,549	12.42	15.52	838	9	1.07	NO	-
Lawrence	9510	2	44,695	5,549	12.42	15.52	785	104	13.25	NO	-
Lawrence	9510	3	44,695	5,549	12.42	15.52	843	115	13.64	NO	-
Lawrence	9510	4	44,695	5,549	12.42	15.52	821	94	11.45	NO	M
Lawrence	9511	1	44,695	5,549	12.42	15.52	636	389	61.16	YES	-
Lawrence	9511	2	44,695	5,549	12.42	15.52	1,188	149	12.54	NO	-
Lawrence	9511	3	44,695	5,549	12.42	15.52	1,091	191	17.51	YES	-



Potential Environmental Justice Impacts – Low Income (Table 5)											
County	Census Tract	Block Group	Community of Comparison (County Data)				Affected Community (Block Group)			Low Income EJ Community?	Alternatives Impacted
			County Total for Low Income Estimate	Number of People with Income Below Poverty Level in Past 12 Months	Percent of People with Income Below Poverty Level in Past 12 Months	125% of Percent People of with Income Below Poverty Level	Block Group Total for Low-Income Estimate	Number of People with Income Below Poverty Level in Past 12 Months	Percent of People with Income Below Poverty Level in Past 12 Months		
Lawrence	9512	1	44,695	5,549	12.42	15.52	1,478	118	7.98	NO	-
Lawrence	9512	2	44,695	5,549	12.42	15.52	3,556	301	8.46	NO	-
Lawrence	9512	3	44,695	5,549	12.42	15.52	1,162	131	11.27	NO	-
Lawrence	9512	4	44,695	5,549	12.42	15.52	870	104	11.95	NO	-
Lawrence	9513	1	44,695	5,549	12.42	15.52	721	151	20.94	YES	-
Lawrence	9513	2	44,695	5,549	12.42	15.52	641	40	6.24	NO	O-
Lawrence	9513	3	44,695	5,549	12.42	15.52	569	16	2.81	NO	-
Lawrence	9513	4	44,695	5,549	12.42	15.52	1,108	347	31.32	YES	O
Martin	9501	1	9,884	1,156	11.70	14.62	778	28	3.60	NO	P, RPA P, R-
Martin	9501	2	9,884	1,156	11.70	14.62	802	25	3.12	NO	M, P, RPA P-
Martin	9501	3	9,884	1,156	11.70	14.62	867	193	22.26	YES	M
Martin	9502	1	9,884	1,156	11.70	14.62	1,147	99	8.63	NO	P, RPA P, R-
Martin	9502	2	9,884	1,156	11.70	14.62	778	101	12.98	NO	RPA P, R-
Martin	9502	3	9,884	1,156	11.70	14.62	625	52	8.32	NO	RPA P, R-
Martin	9502	4	9,884	1,156	11.70	14.62	1,109	194	17.49	YES	M, P, RPA P, R
Martin	9503	1	9,884	1,156	11.70	14.62	1,202	126	10.48	NO	M-
Martin	9503	2	9,884	1,156	11.70	14.62	753	152	20.19	YES	-
Martin	9503	3	9,884	1,156	11.70	14.62	1,823	186	10.20	NO	C, M, P, RPA P, R-
Monroe	1	1	130,635	30,706	23.51	29.38	1,464	1,199	81.90	YES	-
Monroe	1	2	130,635	30,706	23.51	29.38	1,920	1,608	83.75	YES	-
Monroe	1	3	130,635	30,706	23.51	29.38	820	504	61.46	YES	-
Monroe	2.01	1	130,635	30,706	23.51	29.38	26	10	38.46	YES	-
Monroe	2.01	2	130,635	30,706	23.51	29.38	0	0	0.00	NO	-
Monroe	2.01	3	130,635	30,706	23.51	29.38	133	81	60.90	YES	-
Monroe	2.02	1	130,635	30,706	23.51	29.38	88	67	76.14	YES	-
Monroe	2.02	2	130,635	30,706	23.51	29.38	0	0	0.00	NO	-
Monroe	3.01	1	130,635	30,706	23.51	29.38	823	273	33.17	YES	-
Monroe	3.01	2	130,635	30,706	23.51	29.38	1,063	137	12.89	NO	-



Potential Environmental Justice Impacts – Low Income (Table 5)											
County	Census Tract	Block Group	Community of Comparison (County Data)				Affected Community (Block Group)			Low Income EJ Community?	Alternatives Impacted
			County Total for Low Income Estimate	Number of People with Income Below Poverty Level in Past 12 Months	Percent of People with Income Below Poverty Level in Past 12 Months	125% of Percent People of with Income Below Poverty Level	Block Group Total for Low-Income Estimate	Number of People with Income Below Poverty Level in Past 12 Months	Percent of People with Income Below Poverty Level in Past 12 Months		
Monroe	3.01	3	130,635	30,706	23.51	29.38	1,156	886	76.64	YES	-
Monroe	3.01	4	130,635	30,706	23.51	29.38	1,076	359	33.36	YES	-
Monroe	3.02	1	130,635	30,706	23.51	29.38	767	371	48.37	YES	-
Monroe	3.02	2	130,635	30,706	23.51	29.38	839	138	16.45	NO	-
Monroe	3.02	3	130,635	30,706	23.51	29.38	708	303	42.80	YES	-
Monroe	3.02	4	130,635	30,706	23.51	29.38	559	48	8.59	NO	-
Monroe	4.01	1	130,635	30,706	23.51	29.38	1,541	359	23.30	NO	-
Monroe	4.01	2	130,635	30,706	23.51	29.38	711	128	18.00	NO	-
Monroe	4.01	3	130,635	30,706	23.51	29.38	1,859	578	31.09	YES	-
Monroe	4.02	1	130,635	30,706	23.51	29.38	4,490	577	12.85	NO	-
Monroe	4.02	2	130,635	30,706	23.51	29.38	918	192	20.92	NO	-
Monroe	5.01	1	130,635	30,706	23.51	29.38	1,290	104	8.06	NO	-
Monroe	5.01	2	130,635	30,706	23.51	29.38	1,826	313	17.14	NO	-
Monroe	5.01	3	130,635	30,706	23.51	29.38	1,736	77	4.44	NO	-
Monroe	5.02	1	130,635	30,706	23.51	29.38	1,113	204	18.33	NO	-
Monroe	5.02	2	130,635	30,706	23.51	29.38	710	41	5.77	NO	-
Monroe	5.02	3	130,635	30,706	23.51	29.38	1,457	155	10.64	NO	-
Monroe	6.01	1	130,635	30,706	23.51	29.38	1,430	405	28.32	NO	-
Monroe	6.01	2	130,635	30,706	23.51	29.38	2,494	1,407	56.42	YES	-
Monroe	6.02	1	130,635	30,706	23.51	29.38	2,730	1,280	46.89	YES	-
Monroe	6.02	2	130,635	30,706	23.51	29.38	905	372	41.10	YES	-
Monroe	7	1	130,635	30,706	23.51	29.38	1,271	123	9.68	NO	-
Monroe	7	2	130,635	30,706	23.51	29.38	574	102	17.77	NO	-
Monroe	7	3	130,635	30,706	23.51	29.38	1,315	100	7.60	NO	-
Monroe	8	1	130,635	30,706	23.51	29.38	1,213	218	17.97	NO	-
Monroe	8	2	130,635	30,706	23.51	29.38	1,976	822	41.60	YES	-
Monroe	8	3	130,635	30,706	23.51	29.38	823	16	1.94	NO	-
Monroe	8	4	130,635	30,706	23.51	29.38	1,787	330	18.47	NO	-



Potential Environmental Justice Impacts – Low Income (Table 5)											
County	Census Tract	Block Group	Community of Comparison (County Data)				Affected Community (Block Group)			Low Income EJ Community?	Alternatives Impacted
			County Total for Low Income Estimate	Number of People with Income Below Poverty Level in Past 12 Months	Percent of People with Income Below Poverty Level in Past 12 Months	125% of Percent People of with Income Below Poverty Level	Block Group Total for Low-Income Estimate	Number of People with Income Below Poverty Level in Past 12 Months	Percent of People with Income Below Poverty Level in Past 12 Months		
Monroe	9.01	1	130,635	30,706	23.51	29.38	1,452	839	57.78	YES	-
Monroe	9.01	2	130,635	30,706	23.51	29.38	1,831	539	29.44	YES	-
Monroe	9.03	1	130,635	30,706	23.51	29.38	1,682	586	34.84	YES	-
Monroe	9.03	2	130,635	30,706	23.51	29.38	845	194	22.96	NO	-
Monroe	9.03	3	130,635	30,706	23.51	29.38	899	164	18.24	NO	-
Monroe	9.03	4	130,635	30,706	23.51	29.38	1,845	397	21.52	NO	-
Monroe	9.04	1	130,635	30,706	23.51	29.38	1,395	442	31.68	YES	-
Monroe	9.04	2	130,635	30,706	23.51	29.38	1,717	988	57.54	YES	-
Monroe	9.04	3	130,635	30,706	23.51	29.38	2,258	703	31.13	YES	-
Monroe	10.01	1	130,635	30,706	23.51	29.38	2,130	294	13.80	NO	-
Monroe	10.01	2	130,635	30,706	23.51	29.38	1,849	167	9.03	NO	-
Monroe	10.01	3	130,635	30,706	23.51	29.38	1,361	195	14.33	NO	-
Monroe	10.02	1	130,635	30,706	23.51	29.38	1,319	44	3.34	NO	-
Monroe	10.02	2	130,635	30,706	23.51	29.38	1,713	105	6.13	NO	-
Monroe	10.02	3	130,635	30,706	23.51	29.38	1,244	334	26.85	NO	-
Monroe	10.02	4	130,635	30,706	23.51	29.38	1,818	142	7.81	NO	-
Monroe	11.01	1	130,635	30,706	23.51	29.38	1,662	605	36.40	YES	-
Monroe	11.01	2	130,635	30,706	23.51	29.38	1,343	896	66.72	YES	-
Monroe	11.01	3	130,635	30,706	23.51	29.38	1,209	335	27.71	NO	-
Monroe	11.01	4	130,635	30,706	23.51	29.38	1,578	143	9.06	NO	-
Monroe	11.02	1	130,635	30,706	23.51	29.38	1,783	491	27.54	NO	-
Monroe	11.02	2	130,635	30,706	23.51	29.38	2,906	202	6.95	NO	-
Monroe	11.03	1	130,635	30,706	23.51	29.38	1,220	134	10.98	NO	-
Monroe	11.03	2	130,635	30,706	23.51	29.38	1,011	15	1.48	NO	-
Monroe	11.03	3	130,635	30,706	23.51	29.38	480	12	2.50	NO	-
Monroe	12	1	130,635	30,706	23.51	29.38	862	120	13.92	NO	-
Monroe	12	2	130,635	30,706	23.51	29.38	953	49	5.14	NO	-
Monroe	12	3	130,635	30,706	23.51	29.38	1,279	174	13.60	NO	-



Potential Environmental Justice Impacts – Low Income (Table 5)											
County	Census Tract	Block Group	Community of Comparison (County Data)				Affected Community (Block Group)			Low Income EJ Community?	Alternatives Impacted
			County Total for Low Income Estimate	Number of People with Income Below Poverty Level in Past 12 Months	Percent of People with Income Below Poverty Level in Past 12 Months	125% of Percent People of with Income Below Poverty Level	Block Group Total for Low-Income Estimate	Number of People with Income Below Poverty Level in Past 12 Months	Percent of People with Income Below Poverty Level in Past 12 Months		
Monroe	12	4	130,635	30,706	23.51	29.38	631	33	5.23	NO	-
Monroe	12	5	130,635	30,706	23.51	29.38	877	252	28.73	NO	-
Monroe	12	6	130,635	30,706	23.51	29.38	1,411	23	1.63	NO	-
Monroe	13.01	1	130,635	30,706	23.51	29.38	3,124	191	6.11	NO	-
Monroe	13.01	2	130,635	30,706	23.51	29.38	672	0	0.00	NO	-
Monroe	13.01	3	130,635	30,706	23.51	29.38	607	16	2.64	NO	-
Monroe	13.01	4	130,635	30,706	23.51	29.38	1,353	115	8.50	NO	-
Monroe	13.03	1	130,635	30,706	23.51	29.38	1,547	65	4.20	NO	-
Monroe	13.03	2	130,635	30,706	23.51	29.38	2,791	468	16.77	NO	-
Monroe	13.03	3	130,635	30,706	23.51	29.38	1,770	0	0.00	NO	-
Monroe	13.04	1	130,635	30,706	23.51	29.38	1,266	246	19.43	NO	-
Monroe	13.04	2	130,635	30,706	23.51	29.38	832	177	21.27	NO	-
Monroe	13.04	3	130,635	30,706	23.51	29.38	1,991	327	16.42	NO	-
Monroe	13.05	1	130,635	30,706	23.51	29.38	2,410	361	14.98	NO	-
Monroe	14.01	1	130,635	30,706	23.51	29.38	1,556	148	9.51	NO	-
Monroe	14.01	2	130,635	30,706	23.51	29.38	768	29	3.78	NO	-
Monroe	14.02	1	130,635	30,706	23.51	29.38	775	37	4.77	NO	-
Monroe	14.02	2	130,635	30,706	23.51	29.38	1,101	17	1.54	NO	-
Monroe	14.02	3	130,635	30,706	23.51	29.38	1,484	165	11.12	NO	-
Monroe	14.02	4	130,635	30,706	23.51	29.38	1,163	85	7.31	NO	-
Monroe	14.02	5	130,635	30,706	23.51	29.38	1,160	34	2.93	NO	-
Monroe	15.01	1	130,635	30,706	23.51	29.38	2,330	167	7.17	NO	-
Monroe	15.01	2	130,635	30,706	23.51	29.38	2,301	286	12.43	NO	-
Monroe	15.01	3	130,635	30,706	23.51	29.38	1,420	99	6.97	NO	-
Monroe	15.02	1	130,635	30,706	23.51	29.38	1,528	189	12.37	NO	-
Monroe	15.02	2	130,635	30,706	23.51	29.38	1,353	34	2.51	NO	-
Monroe	16	1	130,635	30,706	23.51	29.38	2,173	1,738	79.98	YES	-
Monroe	16	2	130,635	30,706	23.51	29.38	2,301	1,604	69.71	YES	-



Potential Environmental Justice Impacts – Low Income (Table 5)											
County	Census Tract	Block Group	Community of Comparison (County Data)				Affected Community (Block Group)			Low Income EJ Community?	Alternatives Impacted
			County Total for Low Income Estimate	Number of People with Income Below Poverty Level in Past 12 Months	Percent of People with Income Below Poverty Level in Past 12 Months	125% of Percent People of with Income Below Poverty Level	Block Group Total for Low-Income Estimate	Number of People with Income Below Poverty Level in Past 12 Months	Percent of People with Income Below Poverty Level in Past 12 Months		
Monroe	16	3	130,635	30,706	23.51	29.38	685	604	88.18	YES	-
Orange	9513	1	19,186	2,848	14.84	18.56	1,724	338	19.61	YES	-
Orange	9513	2	19,186	2,848	14.84	18.56	602	82	13.62	NO	-
Orange	9513	3	19,186	2,848	14.84	18.56	1,204	45	3.74	NO	-
Orange	9514	1	19,186	2,848	14.84	18.56	1,304	175	13.42	NO	-
Orange	9514	2	19,186	2,848	14.84	18.56	1,066	85	7.97	NO	O-
Orange	9514	3	19,186	2,848	14.84	18.56	976	62	6.35	NO	O-
Orange	9515	1	19,186	2,848	14.84	18.56	1,144	184	16.08	NO	O
Orange	9515	2	19,186	2,848	14.84	18.56	706	107	15.16	NO	O
Orange	9515	3	19,186	2,848	14.84	18.56	544	59	10.85	NO	O
Orange	9515	4	19,186	2,848	14.84	18.56	669	141	21.08	YES	-
Orange	9516	1	19,186	2,848	14.84	18.56	1,813	104	5.74	NO	O-
Orange	9516	2	19,186	2,848	14.84	18.56	1,442	273	18.93	YES	-
Orange	9517	1	19,186	2,848	14.84	18.56	957	192	20.06	YES	-
Orange	9517	2	19,186	2,848	14.84	18.56	508	117	23.03	YES	-
Orange	9517	3	19,186	2,848	14.84	18.56	743	91	12.25	NO	-
Orange	9517	4	19,186	2,848	14.84	18.56	558	98	17.56	NO	-
Orange	9518	1	19,186	2,848	14.84	18.56	940	215	22.87	YES	-
Orange	9518	2	19,186	2,848	14.84	18.56	1,188	350	29.46	YES	-
Orange	9518	3	19,186	2,848	14.84	18.56	1,098	130	11.84	NO	-
Perry	9522	1	17,325	2,067	11.93	14.91	1,031	84	8.15	NO	-
Perry	9522	2	17,325	2,067	11.93	14.91	961	49	5.10	NO	-
Perry	9522	3	17,325	2,067	11.93	14.91	1,097	166	15.13	YES	-
Perry	9522	4	17,325	2,067	11.93	14.91	850	23	2.71	NO	-
Perry	9523	1	17,325	2,067	11.93	14.91	869	27	3.11	NO	-
Perry	9523	2	17,325	2,067	11.93	14.91	1,023	41	4.01	NO	-
Perry	9523	3	17,325	2,067	11.93	14.91	1,354	120	8.86	NO	-
Perry	9524	1	17,325	2,067	11.93	14.91	1,026	152	14.81	NO	-



Potential Environmental Justice Impacts – Low Income (Table 5)											
County	Census Tract	Block Group	Community of Comparison (County Data)				Affected Community (Block Group)			Low Income EJ Community?	Alternatives Impacted
			County Total for Low Income Estimate	Number of People with Income Below Poverty Level in Past 12 Months	Percent of People with Income Below Poverty Level in Past 12 Months	125% of Percent People of with Income Below Poverty Level	Block Group Total for Low-Income Estimate	Number of People with Income Below Poverty Level in Past 12 Months	Percent of People with Income Below Poverty Level in Past 12 Months		
Perry	9524	2	17,325	2,067	11.93	14.91	891	18	2.02	NO	-
Perry	9524	3	17,325	2,067	11.93	14.91	936	137	14.64	NO	-
Perry	9524	4	17,325	2,067	11.93	14.91	969	162	16.72	YES	-
Perry	9525	1	17,325	2,067	11.93	14.91	1,048	202	19.27	YES	-
Perry	9525	2	17,325	2,067	11.93	14.91	931	159	17.08	YES	-
Perry	9525	3	17,325	2,067	11.93	14.91	1,114	8	0.72	NO	-
Perry	9525	4	17,325	2,067	11.93	14.91	1,208	278	23.01	YES	-
Perry	9526	1	17,325	2,067	11.93	14.91	1,023	247	24.14	YES	-
Perry	9526	2	17,325	2,067	11.93	14.91	994	194	19.52	YES	-
Pike	9539	1	12,086	1,418	11.73	14.67	712	29	4.07	NO	B-
Pike	9539	2	12,086	1,418	11.73	14.67	1,172	94	8.02	NO	-
Pike	9539	3	12,086	1,418	11.73	14.67	1,364	252	18.48	YES	-
Pike	9540	1	12,086	1,418	11.73	14.67	671	55	8.20	NO	-
Pike	9540	2	12,086	1,418	11.73	14.67	1,047	213	20.34	YES	-
Pike	9540	3	12,086	1,418	11.73	14.67	1,227	163	13.28	NO	-
Pike	9541	1	12,086	1,418	11.73	14.67	565	71	12.57	NO	-
Pike	9541	2	12,086	1,418	11.73	14.67	1,903	133	6.99	NO	-
Pike	9541	3	12,086	1,418	11.73	14.67	605	9	1.49	NO	-
Pike	9542	1	12,086	1,418	11.73	14.67	561	142	25.31	YES	-
Pike	9542	2	12,086	1,418	11.73	14.67	960	81	8.44	NO	-
Pike	9542	3	12,086	1,418	11.73	14.67	715	101	14.13	NO	-
Pike	9542	4	12,086	1,418	11.73	14.67	584	75	12.84	NO	-
Spencer	9527	1	20,127	1,871	9.30	11.62	1,377	66	4.79	NO	-
Spencer	9527	2	20,127	1,871	9.30	11.62	880	18	2.05	NO	-
Spencer	9527	3	20,127	1,871	9.30	11.62	814	89	10.93	NO	-
Spencer	9527	4	20,127	1,871	9.30	11.62	1,026	107	10.43	NO	-
Spencer	9527	5	20,127	1,871	9.30	11.62	3,147	225	7.15	NO	-
Spencer	9528	1	20,127	1,871	9.30	11.62	1,009	77	7.63	NO	-



Potential Environmental Justice Impacts – Low Income (Table 5)											
County	Census Tract	Block Group	Community of Comparison (County Data)				Affected Community (Block Group)			Low Income EJ Community?	Alternatives Impacted
			County Total for Low Income Estimate	Number of People with Income Below Poverty Level in Past 12 Months	Percent of People with Income Below Poverty Level in Past 12 Months	125% of Percent People of with Income Below Poverty Level	Block Group Total for Low-Income Estimate	Number of People with Income Below Poverty Level in Past 12 Months	Percent of People with Income Below Poverty Level in Past 12 Months		
Spencer	9528	2	20,127	1,871	9.30	11.62	896	38	4.24	NO	-
Spencer	9528	3	20,127	1,871	9.30	11.62	1,277	127	9.95	NO	-
Spencer	9529	1	20,127	1,871	9.30	11.62	818	96	11.74	YES	-
Spencer	9529	2	20,127	1,871	9.30	11.62	860	6	0.70	NO	-
Spencer	9529	3	20,127	1,871	9.30	11.62	1,043	77	7.38	NO	-
Spencer	9530	1	20,127	1,871	9.30	11.62	990	251	25.35	YES	-
Spencer	9530	2	20,127	1,871	9.30	11.62	2,064	106	5.14	NO	-
Spencer	9530	3	20,127	1,871	9.30	11.62	744	0	0.00	NO	-
Spencer	9531	1	20,127	1,871	9.30	11.62	565	49	8.67	NO	-
Spencer	9531	2	20,127	1,871	9.30	11.62	2,617	539	20.60	YES	-
Warrick	301	1	61,153	4,218	6.90	8.62	1,144	110	9.62	YES	-
Warrick	301	2	61,153	4,218	6.90	8.62	503	81	16.10	YES	-
Warrick	301	3	61,153	4,218	6.90	8.62	1,117	46	4.12	NO	-
Warrick	301	4	61,153	4,218	6.90	8.62	848	34	4.01	NO	-
Warrick	302	1	61,153	4,218	6.90	8.62	828	54	6.52	NO	-
Warrick	302	2	61,153	4,218	6.90	8.62	971	92	9.47	YES	-
Warrick	302	3	61,153	4,218	6.90	8.62	890	46	5.17	NO	-
Warrick	302	4	61,153	4,218	6.90	8.62	1,195	58	4.85	NO	-
Warrick	303	1	61,153	4,218	6.90	8.62	3,772	254	6.73	NO	-
Warrick	303	2	61,153	4,218	6.90	8.62	1,671	70	4.19	NO	-
Warrick	304	1	61,153	4,218	6.90	8.62	1,292	193	14.94	YES	-
Warrick	304	2	61,153	4,218	6.90	8.62	580	24	4.14	NO	-
Warrick	304	3	61,153	4,218	6.90	8.62	762	196	25.72	YES	-
Warrick	305	1	61,153	4,218	6.90	8.62	2,229	269	12.07	YES	-
Warrick	305	2	61,153	4,218	6.90	8.62	1,723	227	13.17	YES	-
Warrick	305	3	61,153	4,218	6.90	8.62	1,884	123	6.53	NO	-
Warrick	305	4	61,153	4,218	6.90	8.62	1,012	19	1.88	NO	-
Warrick	306	1	61,153	4,218	6.90	8.62	1,154	205	17.76	YES	-



Potential Environmental Justice Impacts – Low Income (Table 5)											
County	Census Tract	Block Group	Community of Comparison (County Data)				Affected Community (Block Group)			Low Income EJ Community?	Alternatives Impacted
			County Total for Low Income Estimate	Number of People with Income Below Poverty Level in Past 12 Months	Percent of People with Income Below Poverty Level in Past 12 Months	125% of Percent People of with Income Below Poverty Level	Block Group Total for Low-Income Estimate	Number of People with Income Below Poverty Level in Past 12 Months	Percent of People with Income Below Poverty Level in Past 12 Months		
Warrick	306	2	61,153	4,218	6.90	8.62	796	81	10.18	YES	-
Warrick	306	3	61,153	4,218	6.90	8.62	1,346	43	3.19	NO	-
Warrick	306	4	61,153	4,218	6.90	8.62	523	44	8.41	NO	-
Warrick	306	5	61,153	4,218	6.90	8.62	609	0	0.00	NO	-
Warrick	306	6	61,153	4,218	6.90	8.62	947	0	0.00	NO	-
Warrick	306	7	61,153	4,218	6.90	8.62	734	182	24.80	YES	-
Warrick	307.02	1	61,153	4,218	6.90	8.62	2,771	103	3.72	NO	-
Warrick	307.02	2	61,153	4,218	6.90	8.62	2,809	18	0.64	NO	-
Warrick	307.02	3	61,153	4,218	6.90	8.62	802	44	5.49	NO	-
Warrick	307.02	4	61,153	4,218	6.90	8.62	393	41	10.43	YES	-
Warrick	307.03	1	61,153	4,218	6.90	8.62	440	62	14.09	YES	-
Warrick	307.03	2	61,153	4,218	6.90	8.62	766	0	0.00	NO	-
Warrick	307.03	3	61,153	4,218	6.90	8.62	1,934	54	2.79	NO	-
Warrick	307.03	4	61,153	4,218	6.90	8.62	2,483	262	10.55	YES	-
Warrick	307.04	1	61,153	4,218	6.90	8.62	2,025	106	5.23	NO	-
Warrick	307.04	2	61,153	4,218	6.90	8.62	2,729	87	3.19	NO	-
Warrick	307.05	1	61,153	4,218	6.90	8.62	1,438	292	20.31	YES	-
Warrick	307.05	2	61,153	4,218	6.90	8.62	2,773	120	4.33	NO	-
Warrick	307.05	3	61,153	4,218	6.90	8.62	2,474	0	0.00	NO	-
Warrick	307.05	4	61,153	4,218	6.90	8.62	2,266	44	1.94	NO	-
Warrick	308	1	61,153	4,218	6.90	8.62	544	0	0.00	NO	-
Warrick	308	2	61,153	4,218	6.90	8.62	2,241	307	13.70	YES	-
Warrick	308	3	61,153	4,218	6.90	8.62	1,172	61	5.20	NO	-
Warrick	308	4	61,153	4,218	6.90	8.62	838	166	19.81	YES	-
Warrick	308	5	61,153	4,218	6.90	8.62	1,725	0	0.00	NO	-



TABLE 6. EJ ANALYSIS MINORITY POPULATIONS TOTALS – LOCAL IMPROVEMENTS

Potential Environmental Justice Impacts – Minority (Table 6)											
County	Census Tract	Census Block Group	Local Improvement	Community of Comparison (County Data)				Affected Community (Block Group)			
				County Total for Minority Estimate	Number of People of Minority Heritage in County	Percent People of Minority Heritage in County	125% of Percent People of Minority Heritage in County	Block Group Total for Minority Estimate	Number of People of Minority Heritage in Block Group	Percent People of Minority Heritage in Block Group	Potential Minority EJ Impact?
Daviess	9543	1	9	33120	2796	8.442029	10.55	1006	22	2.186879	NO
Dubois	9533	2	4	285,813	4,165	1.46	1.82	1,658	0	0.00	NO
Dubois	9534	1	3, 4	285,813	4,165	1.46	1.82	1,558	58	3.72	YES
Dubois	9533	1	4, 5	285,813	4,165	1.46	1.82	3,162	807	25.52	YES
Dubois	9532	4	2	285,813	4,165	1.46	1.82	988	119	12.04	YES
Dubois	9535	1	5	285,813	4,165	1.46	1.82	726	113	15.56	YES
Dubois	9537	2	1	285,813	4,165	1.46	1.82	1,856	56	3.02	YES
Dubois	9536	1	16	285,813	4,165	1.46	1.82	1,049	77	7.34	YES
Dubois	9535	5	2	285,813	4,165	1.46	1.82	1,595	87	5.45	YES
Dubois	9532	3	3	285,813	4,165	1.46	1.82	2,643	0	0.00	NO
Dubois	9534	4	2, 3	285,813	4,165	1.46	1.82	2,427	321	13.23	YES
Dubois	9535	2	15	285,813	4,165	1.46	1.82	684	65	9.50	YES
Dubois	9538	2	2	285,813	4,165	1.46	1.82	1,809	678	37.48	YES
Dubois	9533	4	4	285,813	4,165	1.46	1.82	783	0	0.00	NO
Dubois	9533	3	4	285,813	4,165	1.46	1.82	1,681	2	0.12	NO
Dubois	9534	2	4	285,813	4,165	1.46	1.82	858	0	0.00	NO
Dubois	9532	1	5	285,813	4,165	1.46	1.82	1260	3	0.24	NO
Greene	9553	2	9	32,159	1,088	3.38	4.23	887	152	17.14	YES
Martin	9503	1	13	10212	302	2.957305	3.696631	1250	22	1.76	NO
Martin	9502	4	7	10,212	302	2.96	3.70	1,150	8	0.70	NO
Martin	9501	3	13	10212	302	2.957305	3.696631	1064	165	15.50752	YES



Potential Environmental Justice Impacts – Minority (Table 6)

County	Census Tract	Census Block Group	Local Improvement	Community of Comparison (County Data)				Affected Community (Block Group)			
				County Total for Minority Estimate	Number of People of Minority Heritage in County	Percent People of Minority Heritage in County	125% of Percent People of Minority Heritage in County	Block Group Total for Minority Estimate	Number of People of Minority Heritage in Block Group	Percent People of Minority Heritage in Block Group	Potential Minority EJ Impact?
Orange	9515	3	17	19,545	959	4.91	6.13	622	63	10.13	YES
Orange	9516	1	17	19,545	959	4.91	6.13	1,813	87	4.80	NO



TABLE 7. EJ ANALYSIS LOW INCOME POPULATIONS TOTALS – LOCAL IMPROVEMENTS

Potential Environmental Justice Impacts – Low-Income (Table 7)											
County	Census Tract	Census Block Group	Local Improvement	Community of Comparison (County Data)				Affected Community (Block Group)			Potential Low-Income EJ Impact?
				County Total for Low-Income Estimate	Number of People with Income Below Poverty Level in Past 12 Months	Percent of People with Income Below Poverty Level in Past 12 Months	125% of Percent People of with Income Below Poverty Level	Block Group Total for Low-Income Estimate	Number of People with Income Below Poverty Level in Past 12 Months	Percent of People with Income Below Poverty Level in Past 12 Months	
Daviess	9543	1	9	32,556	3,888	11.94	14.93	No Data	No Data	No Data	No Data
Dubois	9533	2	4	41,649	3,767	9.044634925	11.30579366	1,591	397	24.95285984	YES
Dubois	9534	1	3, 4	41,649	3,767	9.04	11.31	1,558	43	3	NO
Dubois	9533	1	4, 5	41,649	3,767	9.04	11.31	3,162	373	12	YES
Dubois	9532	4	2	41,649	3,767	9.04	11.31	988	0	0	NO
Dubois	9535	1	5	41,649	3,767	9.04	11.31	726	14	2	NO
Dubois	9537	2	1	41,649	3,767	9.04	11.31	1,856	54	3	NO
Dubois	9536	1	16	41,649	3,767	9.04	11.31	1,049	91	9	NO
Dubois	9535	5	2	41,649	3,767	9.04	11.31	1,595	6	0	NO
Dubois	9532	3	3	41,649	3,767	9.04	11.31	2,643	322	12	YES
Dubois	9534	4	2, 3	41,649	3,767	9.04	11.31	2,181	309	14	YES
Dubois	9535	2	15	41,649	3,767	9.04	11.31	684	90	13	YES
Dubois	9538	2	2	41,649	3,767	9.04	11.31	1,729	491	28	YES
Dubois	9533	4	4	41,649	3,767	9.04	11.31	No Data	No Data	No Data	No Data
Dubois	9533	3	4	41,649	3,767	9.04	11.31	No Data	No Data	No Data	No Data
Dubois	9534	2	4	41,649	3,767	9.04	11.31	No Data	No Data	No Data	No Data
Dubois	9532	1	5	41,649	3,767	9.04	11.31	No Data	No Data	No Data	No Data
Greene	9553	2	9	31,730	4,527	14.27	17.83	887	72	8	NO
Martin	9503	1	13	9,884	1,156	11.69566977	14.61958721	No Data	No Data	No Data	No Data
Martin	9502	4	7	9,884	1,156	11.69566977	14.61958721	1,109	194	17.49323715	YES
Martin	9501	3	13	9,884	1,156	11.70	14.62	867	193	22	YES
Orange	9515	3	17	19,186	2,848	14.8441572	18.5551965	544	59	10.84558824	NO
Orange	9516	1	17	19,186	2,848	14.84	18.56	No Data	No Data	No Data	No Data



ENVIROMENTAL JUSTICE OUTREACH PLAN

Mid-States Corridor Tier 1 Environmental Impact Statement

Prepared for
Indiana Department of Transportation
Mid-States Corridor Regional Development Authority
MAY 2020
UPDATED MAY 4, 2021
UPDATED AUGUST 13, 2023

Prepared by
Mid-States Corridor Project Consultant Public Involvement Team





Environmental Justice (EJ)

Environmental justice is the fair treatment and meaningful involvement of all people, regardless of race, ethnicity, income, national origin, or educational level with respect to the development, implementation and enforcement of environmental laws, regulations, and policies. Fair treatment means that no population, due to policy or economic disempowerment, is forced to bear a disproportionate burden of the negative human health and environmental impacts, including social and economic effects, resulting from transportation decisions, programs and policies made, implemented, and enforced at the Federal, State, local or tribal level.

Environmental Justice (EJ) is important because it helps to ensure full and fair participation by potentially affected communities in every phase of the transportation decision-making process. When this is accomplished, the development, construction, operation and maintenance of transportation projects should reflect an equitable distribution of benefits and burdens. EJ is not a new concept. In 1994, President Clinton issued Executive Order 12898, directing federal agencies, to the greatest extent practicable, to identify and address disproportionately high and adverse human health or environmental effects of their programs, policies, and activities on minority populations and low-income populations. In 1997, the Department of Transportation (U.S. DOT) issued an Order to address EJ in minority populations and low-income populations to summarize and expand upon the requirements of Executive Order 12898 on EJ. The FHWA issued its own EJ Order in 1998 (Order 6640.23). U.S. DOT, FHWA, and other modal administrations have since updated the respective orders and continually seek to enhance their efforts to address EJ effects of their programs, policies, and activities.

Public engagement and participation in decision-making is a fundamental principle of EJ and is critical to achieving outcomes that reflect the needs of all affected stakeholders to the greatest extent feasible. Minority and low-income communities have historically borne disproportionately high and adverse human health or environmental effects of transportation infrastructure projects. Active and meaningful participation of all affected communities will help ensure that transportation plans and projects avoid, and when avoidance is not possible, minimize, or mitigate these impacts on minority and low-income populations. For this reason, DOT is committed to using public engagement to encourage and empower EJ populations to engage meaningfully in the planning and implementation of DOT programs, policies, and activities.

Mid-States Corridor Outreach Approach

The Environmental Justice Outreach Plan was created at the beginning of the project. The COVID-19 pandemic forced the project team to pause and then, with the guidance of FHWA, shift plans. This document was modified to reflect the original plan and the changes. The Environmental Justice Action Plan was crafted as a response to the pandemic and outlines how the project team modified outreach to meet the restrictions and apprehension surrounding COVID-19.

The public outreach program for this project included specific efforts to engage potentially affected environmental justice communities in this tiered-environmental study. The Tier 1 activities were planned with a two-phased approach. During Phase 1 Pre-Screening of Alternatives, engagement activities focused on reaching a broader range of individuals. Phase 2 Post-Screening of Alternatives was intended to focus on meetings with potential environmental justice communities after the number of potential alternatives was screened to a lesser level. This approach would have allowed better opportunities for detailed discussions while still gathering input from these communities within each



geographic region of the project. Unfortunately, the onset of the COVID-19 pandemic precluded the project team from conducting targeted, small group meetings to gather input from potential environmental justice community members. The original Phase 2: Post-Screening of Alternatives plan was replaced with an EJ Action Plan in response to the changing conditions presented by the pandemic. The Action Plan included a flier distribution program available both in English and Spanish in areas proximate to CBGs. To read more about the Action Plan activities see Phase 2 below.

Phase 1: Pre-Screening of Alternatives

The first round of Public Information Meetings (PIMs) provided an opportunity for the public to identify potential preliminary alternatives as well as provide input on the Draft Purpose and Need. Public Information Meetings were held in three different communities regarding the Purpose and Need. Evening meetings in Jasper, Washington and French Lick were held at local high schools. The meeting locations were chosen to be accessible to all stakeholders including those with physical disabilities, minorities, low-income, elderly, and transit dependent. People in need of assistance were told to contact the project office. Resources were available through INDOT's Office of Public Involvement/Communications to provide accommodations for Limited English Proficiency individuals as well.

Another option for those who found it difficult to attend the meetings, the "Meeting in a Box" format was developed and hosted at 17 public libraries throughout the project study area. Library locations were selected based on their proximity to the preliminary alternatives and potentially impacted EJ communities. Libraries were chosen not just to provide an opportunity for local access to information. They also offer extended daily hours and, in some cases, weekend hours. Librarians were available to assist with understanding study materials. For adults without access to reliable childcare, the libraries provided greater flexibility to participate. The "Meeting in a Box" included all PIM materials along with directions on how to provide general comments or comments on potential preliminary alternatives. It also allowed for submitting additional alternatives (line(s) on a map) for consideration. Comments and potential preliminary alternatives were collected from each public library 30 days after distribution and incorporated into the project database. Another "Meeting in a Box" opportunity was provided to coincide with the second round of PIMs. This second round of meetings concentrated on gathering input on the Screening of Alternatives document. A questionnaire was developed to allow people to rank their preferences of alternatives and give feedback on the facility type, current obstacles, and concerns. This questionnaire was available at the "Meetings in a Box" libraries as well as the other meeting materials. The public meetings were held at schools in three communities, Loogootee, Bedford, and Jasper. The meetings, held in late February of 2020, would mark the end of in person outreach for an extended period.

Phase 2: Post-Screening of Alternatives

As the comment period for the second round of Public Information Meetings closed, so did the state of Indiana. According to the NY Times, on March 24, 2020, Gov. Eric J. Holcomb asked "Hoosiers to hunker down" in response to the global COVID-19 pandemic. All non-essential employees were ordered to stay home and shelter in place. The project office was closed and wouldn't reopen until February of 2021 when it was available by appointment only. Also in February, as the project was restarting, project team members met electronically with members of FHWA, including a Public Outreach Specialist from D.C. to discuss best practices for outreach in the COVID-19 era. During this meeting, a new course of action was



identified. **The EJ Action Plan** was created in response to the challenges still present in an environment where people remained concerned about the pandemic.

The original plan emphasized meetings with potential environmental justice communities after the number of alternatives was reduced during screening. This approach would have allowed more opportunities for detailed discussions while still gathering input from these communities within each geographic region of the project. In May 2021 it was determined that the proposed Post-Screening of Alternatives targeted meetings were no longer feasible due to the COVID-19 outbreak.

In the absence of these meetings, the EJ Action Plan instituted a flier distribution program to reach EJ populations throughout the project study area. A list of flier locations are included at the end of this plan. Fliers were strategically posted at local grocery and convenience store retailers, especially those within or proximate to EJ communities because they were reliably open for business and visited frequently. The fliers were also posted at several other local facilities, including libraries, healthcare facilities, municipal buildings, etc. throughout the project study area. The distribution of fliers was included as an additional outreach effort to increase project awareness within EJ communities and direct them to additional information regarding the project.

The flier distribution targeted EJ block groups overlapping or proximate to each alternative. Locations for fliers were identified within each of those block groups with more locations identified in groups with higher population densities. Additionally, fliers were posted at “Meeting in a Box” library locations.

Fliers were posted in the spring of 2021 to increase awareness of the project. A second round of fliers was posted with the release of the Draft Environmental Impact Statement (DEIS) in April 2022 coinciding with the public hearings and formal DEIS comment period. The postings were targeted at increasing awareness within EJ communities. They were accompanied by other outreach mechanisms, including the project website, social media and news outlets. All notified people about the DEIS publication. “Meeting in a Box” materials were provided at the library locations to solicit feedback on the DEIS and provide EJ communities with more convenient access to the updated project information.

As mentioned above, the original outreach plan called for meetings close to identified EJ communities. The planned locations were:

- Grandview/Rockport
- Dale
- Huntingburg
- French Lick/West Baden
- Mitchell
- Bedford/Oolitic
- Loogootee
- Odon
- Washington
- Rural Martin (Dover Hill) and Lawrence (Williams area) Counties

While the targeted meetings meant to be held in Phase 2 were not feasible, the plans for those meetings proximate to Refined Preferred Alternative P (RPA P) are provided below as an example of the targeted outreach that was planned for Tier 1 and will be duplicated in the Tier 2 studies. The plan provided for project team members to gain input from local officials, churches and social service organizations and arrange for meetings proximate to areas with identified potential environmental



justice communities. Because these plans were developed at the beginning of the project, they refer only to Alternative P and don't include mention of RPA P which was added in response to comments on the Draft Environmental Impact Statement.

Note: A map of the potential environmental justice communities is included at the end of this plan.

Grandview/Rockport Area

There are three census block groups (CBG) in this area that touch the existing US 231 corridor. US 231 is a limited access expressway facility from the Natcher Bridge at SR 66 near Rockport to I-64 near Dale.

- Census tract 9531, block group 1: potential low income EJ community
- Census tract 9528, block group 2: potential minority EJ community
- Census tract 9528, block group 3: potential low income and minority EJ community

Access to and across US 231 will only change in the vicinity of these potential EJ communities if the decision is made to upgrade to a fully access-controlled freeway facility. Population concentrations are far-removed from the US 231 area so disproportionate relocations to low-income and minority populations is not likely. Additionally, changes to access within proximity of any concentrations of potential EJ communities is not likely. SR 66 is already an interchange and SR 70 would also retain access to US 231. However, a freeway alternative is still possible* so a meeting is proposed for this region.

Proposed Meeting: The Project Team proposes to host a meeting at the Spencer County Library Grandview Branch (403 Main Street, Grandview) between May and July of 2020. The team will coordinate with the Spencer County Division of Family Resources in Rockport, along with representatives from the City of Rockport and Town of Grandview to assist in notifying community members about the meeting. Meeting fliers will be placed in their respective offices and phone contacts will be made with appropriate community members and representatives. Fliers will include information about submitting input and comments on the projects.

Dale Area

There are two census block groups in this area that touch the existing US 231 corridor.

- Census tract 9527, block groups 3 & 4: potential low-income EJ communities

These census tracts encompass the entire Town of Dale. There is no concern with displacing or relocating disproportionate concentrations of low-income families regardless of the alternative or facility type decision. However, there are currently three access points from US 231 to Dale and this would change considerably if the decision were made to upgrade to a freeway facility*.

Proposed Meeting: The Project Team proposes to host a meeting at the Dale Community Center (103 N. Wallace Street) between May and July of 2020. The team will coordinate with the North Spencer County Community Action Center in Dale, as well as the Spencer County Family Resources Center in Rockport to assist in notifying community members about the meeting. Meeting fliers will be placed at their respective offices and phone contacts will be made with appropriate community members and representatives.

Huntingburg Area

There is one census block group in this area near Alternatives P, M, C, O and RPA P. The location is southeast of Huntingburg.



- Census tract 9538, block group 4: potential low-income EJ community

The potential for displacing or relocating disproportionate concentrations of low-income families in this area is low, even if an eastern variation is identified. There is potential for access changes that may impact traffic patterns, especially for work commutes.

Proposed Meeting: The Project Team proposes to host a meeting at Southridge Jr. /Sr. High School (1112 S. Main St., Huntingburg) between May and July of 2020. The team will coordinate with the Dubois County Office of Family Resources in Jasper to assist in notifying community members about the meeting and if English as a Second Language accommodations are needed. Meeting fliers will be placed at Huntingburg government centers and phone contacts will be made with appropriate community members and representatives. Fliers will include information about submitting input and comments on the projects.

Loogootee Area

There is only one census block group that touches Alternative P and RPA P. The CBG slightly reaches the western variations of these alternatives and more prominently touches the eastern variations.

- Census tract 9502, block group 1: potential low-income EJ community

Access to and from work opportunities is important for the residents of Loogootee and Martin County. The facility type decision will determine the amount of access onto and across the highway facility should the decision be made to select Alternative P or RPA P. It is important to note that one of the second round of Public Information Meetings was held at the Loogootee Junior-Senior High School.

Proposed Meeting: The Project Team proposes to host a meeting at the Martin County Community building (2668 US 50, Loogootee) between May and July of 2020. If this location does not work out the local schools are a common local gathering place and easily accessible by most community residents. The team will coordinate with the Martin County Family Social Services office in Loogootee to assist in notifying community members about the meeting. Meeting fliers will be posted at local government buildings and phone contacts will be made with appropriate community members and social services representatives. Fliers will include information about submitting input and comments on the projects.

Odon Area

There is only one census block group that touches Alternative P or RPA P. This CBG encompasses the area southeast of Odon along SR 58 crossing US 231 (Farlen) to the east.

- Census tract 9543, block group 4: potential minority EJ community

The area where Alternative P and RPA P is proposed in the vicinity of Odon is sparsely populated. Further the primary access in the area is SR 58 which would maintain access regardless of facility type. A meeting will be held to provide ample opportunities for these communities to engage in the decision-making process.

Proposed Meeting: The Project Team proposes to host a meeting at the North Daviess Jr/Sr High School (5494 E State Rd 58, Elnora) between May and July of 2020. The local schools are a common local gathering place and easily accessible by most community residents. The team will coordinate with the Daviess County Division of Family Resources office in Washington to assist in notifying community members about the meeting. Meeting fliers will be posted at local government buildings and phone



Environmental Justice Outreach Plan

contacts will be made with appropriate community members and social services representatives. Fliers will include information about submitting input and comments on the projects.

*The freeway option was removed from consideration during the Tier 1 Study. This means impacts to the Grandview/Rockport and Dale EJ communities are expected to be minimal. Tier 2 studies will analyze needs in these communities to develop targeted outreach.



Library Locations			
Bloomfield-Eastern Greene County Public Library	125 S Franklin St	Bloomfield	812-384-4125
Monroe County Public Library	303 E Kirkwood Ave	Bloomington	812-349-3050
Bedford Public Library	1323 K St	Bedford	812-275-4471
Mitchell Community Public Library	804 W Main St	Mitchell	812-849-2412
Shoals Public Library	404 High St	Shoals	812-247-3838
Loogootee Public Library	106 N Line St	Loogootee	812-295-3713
Washington Carnegie Public Library	300 W Main St	Washington	812-254-4586
Pike County Public Library	1008 E Maple St	Petersburg	812-354-6257
Pike County Public Library - Otwell Branch	2301 N Spring St	Otwell	812-380-0066
Huntingburg Public Library	419 N Jackson St	Huntingburg	812-683-2052
Jasper-Dubois County Public Library	1116 Main St	Jasper	812-482-2712
Dubois Branch Library	5506 E Main St	Dubois	812-678-2548
Ferdinand Branch Library	112 E 16th St	Ferdinand	812-367-1671
Melton Public Library	8496 West College St		812-936-2177
Orleans Town and Township Public Library	174 North Maple St	Orleans	812-865-3270
Spencer County Public Library	210 Walnut St	Rockport	812-649-4866
Lincoln Heritage Public Library	105 Wallace St	Dale	812-937-7170



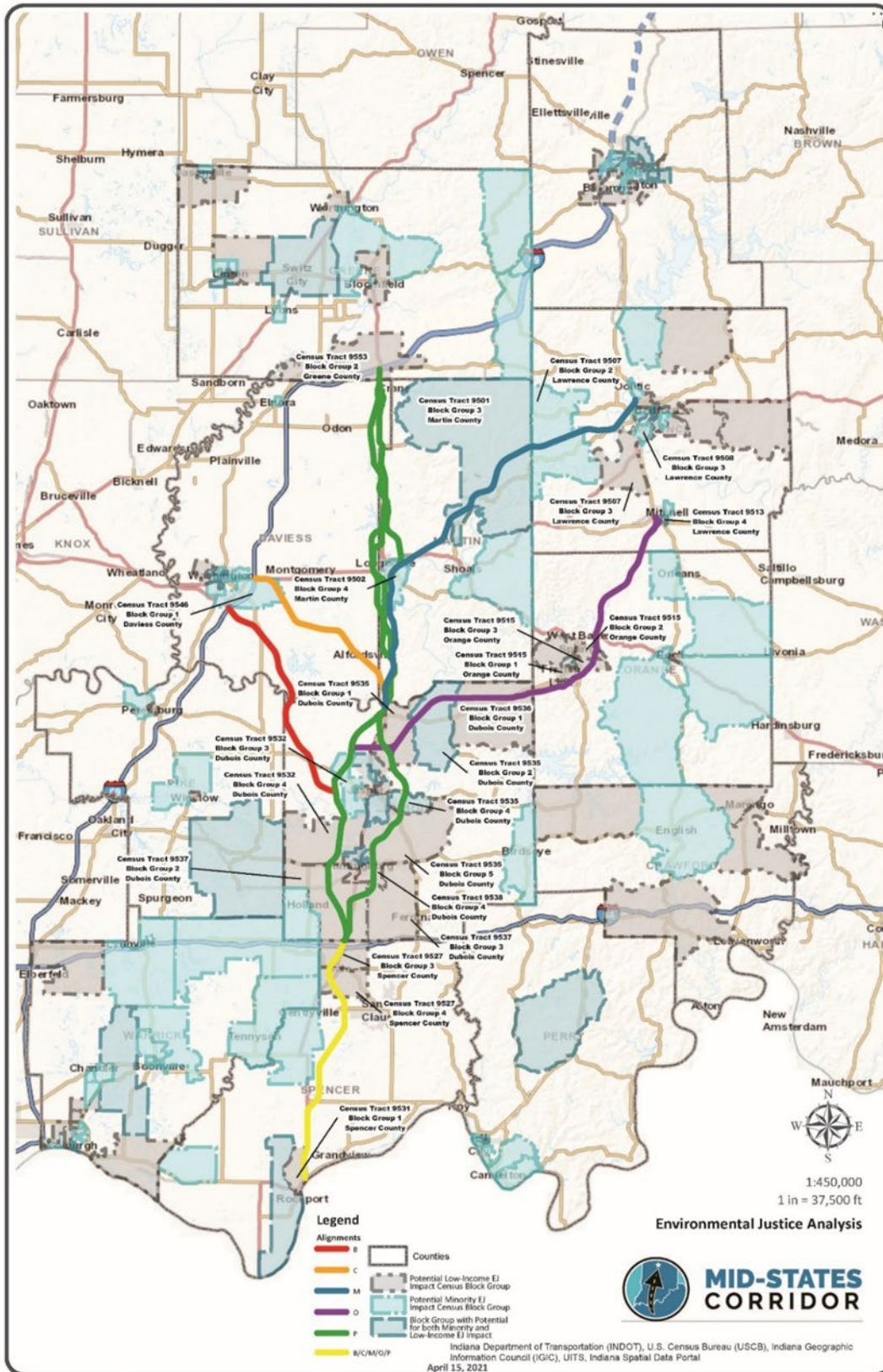
Mid-States Corridor Flier Locations (Table 2)			
Region	Name	Address	Phone
Grandview	Spencer County Public Library Grandview Branch	403 Main St, Grandview, IN 47615	812-649-9732
	Grandview Town Hall	316 Main St, Grandview, IN 47615	812-649-2573
Rockport	Rockport IGA	509 Main St, Rockport, IN 47635	812-649-2435
	Chuckles 16	612 N 5th St, Rockport, IN 47635	812-649-9419
	Rockport City Hall	509 Main St, Rockport, IN 47635	812-649-2435
	Spencer County Public Library	Walnut St &, S 3rd St, Rockport, IN 47635	812-649-4866
Tennyson	Tennyson Post Office	124 S Main St, Tennyson, IN 47637	800-275-8777
	Tennyson Town Hall/Water Dept	112 N Main St, Tennyson, IN 47637	812-567-8816
Dale	Dale Community Center	103 N Wallace St, Dale, IN 47523	812-937-2446
	Lincoln Heritage Public Library	105 N Wallace St, Dale, IN 47523	812-937-7170
	Holiday Foods	550 S Washington St, Dale, IN 47523	812-937-2856
	Dale Town Hall	103 S Wallace St, Dale, IN 47523	812-937-2086
Huntingburg	Mor For Less Grocery	103 N Main St, Huntingburg, IN 47542	812-683-2405
	Huntingburg Elementary School	501 W Sunset Dr, Huntingburg, IN 47542	812-683-1172
	Huntingburg City Hall	508 E 4th St, Huntingburg, IN 47542	812-683-2211
	Huntingburg Post Office	410 N Jackson St, Huntingburg, IN 47542	800-275-8777
Holland	Sunoco Gas Station	402 Main St, Holland, IN 47541	812-536-3421
	Holland Post Office	403 W Main St, Holland, IN 47541	800-275-8777
Jasper	Holiday Foods	847 3rd Ave, Jasper, IN 47546	812-482-4464
	Dollar General Store	4117 Mannheim Rd, Jasper, IN 47546	812-329-2650
	Dollar General Store	671 3rd Ave, Jasper, IN 47546	423-939-9540
	St. Vincent De Paul Store	1320 3rd Ave, Jasper, IN 47546	812-482-3601
	Jasper Memorial Hospital	800 W 9th St, Jasper, IN 47546	812-996-2345
St. Anthony/St. Marks	St. Anthony Community Center	PO Box 34, 4665 S Cross St, St Anthony, IN 47575	812-326-2761
	St. Anthony Post Office	4531 S Cross St, St Anthony, IN 47575	800-275-8777
French Lick / West Baden	French Lick Post Office	8617 W College St, French Lick, IN 47432	800-275-8777



Mid-States Corridor Flier Locations (Table 2)			
Region	Name	Address	Phone
	Jay C Food Store	8276 IN-56, West Baden Springs, IN 47469	812-936-9890
	French Lick Town Hall	7959 W Hunters Run Dr, French Lick, IN 47432	812-936-4737
	West Baden Springs Town Hall	8361 IN-56, West Baden Springs, IN 47469	812-936-7119
Washington	Casey's General Store	2009 E National Hwy, Washington, IN 47501	812-254-2301
	Walmart Supercenter	1801 S, IN-57, Washington, IN 47501	812-254-6681
	Mayor's Office	200 Harned Ave, Washington, IN 47501	812-254-5575
	Daviess County Courthouse	200 E Walnut St, Washington, IN 47501	812-254-1091
Odon	Jay C Food Store	309 W Main St, Odon, IN 47562	812-636-0101
	Casey's General Store	101 W Elnora St, Odon, IN 47562	812-636-0333
Loogootee	Ruler Foods	600 W Broadway St, Loogootee, IN 47553	812-295-3030
	IGA	500 W Broadway St, Loogootee, IN 47553	812-295-2949
	Loogootee Post Office	203 NW 1st St, Loogootee, IN 47553	800-275-8777
	City Government Office	401 John F Kennedy Ave, Loogootee, IN 47553	812-295-3200
Dover Hill / Williams	Dover Hill Christian Union Church	15581 IN-450, Shoals, IN 47581	812-388-6832
	Mount Union Church of Christ	14504 Dover Hill Rd, Loogootee, IN 47553	812-247-2317
	Williams Post Office	61 Kern St, Williams, IN 47470	800-275-8777
	White River Bait & Tackle	249 Hendrickson St, Williams, IN 47470	812-388-7362
	Bethel Baptist Church	10637 Williams Rd, Williams, IN 47470	N/A
	Williams Church of Christ	304 Ridge Rd, Williams, IN 47470	812-388-7399
	Williams First Baptist Church	373 Ridge Rd, Williams, IN 47470	812-388-7321
Mitchell	Ruler Foods	1240 W Main St, Mitchell, IN 47446	812-849-3442
	City Government Office	407 S 6th St, Mitchell, IN 47446	812-848-5161
	Mitchell Post Office	118 N 7th St, Mitchell, IN 47446	800-275-8777
Bedford	Walmart Supercenter	3200 John Williams Blvd, Bedford, IN 47421	812-275-0335
	Jay C Food Store	2631 16th St, Bedford, IN 47421	812-275-0725



Region	Name	Address	Phone
	Bedford Post Office	1720 H St, Bedford, IN 47421	800-275-8777
	Mayor's Office	1102 16th St, Bedford, IN 47421	812-279-6555
Oolitic	Casey's General Store	113 7th St, Oolitic, IN 47451	812-277-1871
	Dollar General Store	203 Hoosier Ave, Oolitic, IN 47451	812-329-2320





**MID-STATES
CORRIDOR**

ENVIRONMENTAL JUSTICE ACTION PLAN

Mid-States Corridor Tier 1 Environmental Impact Statement

Prepared for

Indiana Department of Transportation

Mid-States Corridor Regional Development Authority

MAY 4, 2021

UPDATED AUGUST 13, 2023

Prepared by

Mid-States Corridor Project Consultant Public Involvement Team





Action Plan

In the absence of any foreseeable “end” to meeting restrictions as well as the likelihood of varying levels of comfort with face-to-face meetings in the coming months, the project team was approved to replace Phase 2: Post-Screening of Alternatives with this EJ Action Plan. The proposed actions were developed in a meeting with representatives from FHWA Indiana Division and FHWA Headquarters held in February 2021 to address best strategies for outreach in during the pandemic. The Action Plan was reviewed and approved by INDOT and FHWA as an alternative to the meetings planned in EJ communities.

Mobile-Friendly Website

Despite the limitations that Environmental Justice communities face such as limited internet access, limited access to computers and limited transportation options, experts with FHWA indicated most have smart phones. The Mid-States Corridor Project Website is a mobile-friendly website. Users can access the website and view content, including project documents in a format designed to be viewed with a smart phone. The website provides a comment form and provides email and phone contact information. The website also contains a translation feature which converts the website text to Spanish and a note to request translation of any posted PDF documents.

Project Office

A project office was established on the Jasper campus of Vincennes University early in the project. Per local protocols, the project office was closed in late March of 2020. When restrictions began to be lifted, the project office reopened by appointment only. Project representatives were in the office on designated days to address phone inquiries or meet with visitors that had arranged an appointment.

Flier Distribution

During the COVID pandemic, people’s time in public settings was limited. However, people were still patronizing grocery and convenience stores to buy essentials. Team members posted fliers at local grocery and convenience store retailers, especially those within or proximate to EJ communities. The fliers were posted at several other local facilities, including libraries, healthcare facilities, municipal buildings, etc. throughout the project study area.

The flier distribution targeted block groups overlapping or proximate to each alternative. Locations for fliers were identified within each of those block groups with more locations identified in groups with higher population densities. Additionally, fliers were posted at all Meeting-in-a-Box library locations (see **Table 1**). A copy of the flier in English and Spanish along with a list of identified locations is included with this Action Plan.

Fliers were posted in the spring of 2021. A second round of fliers were posted in Spring 2022 to correspond with the release of the Draft Environmental Impact Statement and the associated public hearings and formal comment period. **Table 2** contains flier placement locations.

Public Hearing

Two public hearings were held to present the Draft Environmental Impact Statement to the public and to solicit formal public comments. Local health protocols were observed and a virtual option was offered in the form of a video presentation.



Meetings-in-a-Box

As with both rounds of Public Information Meetings, Meetings-in-a-Box were placed at public libraries throughout the project study area. Meeting handouts were provided along with comment forms that could be completed and left in a comment box at the library or mailed or scanned and emailed to the project team. A list of libraries is included below.

Table 1: Library Locations

Library Locations			
Bloomfield-Eastern Greene County Public Library	125 S Franklin St	Bloomfield	812-384-4125
Monroe County Public Library	303 E Kirkwood Ave	Bloomington	812-349-3050
Bedford Public Library	1323 K St	Bedford	812-275-4471
Mitchell Community Public Library	804 W Main St	Mitchell	812-849-2412
Shoals Public Library	404 High St	Shoals	812-247-3838
Loogootee Public Library	106 N Line St	Loogootee	812-295-3713
Washington Carnegie Public Library	300 W Main St	Washington	812-254-4586
Pike County Public Library	1008 E Maple St	Petersburg	812-354-6257
Pike County Public Library - Otwell Branch	2301 N Spring St	Otwell	812-380-0066
Huntingburg Public Library	419 N Jackson St	Huntingburg	812-683-2052
Jasper-Dubois County Public Library	1116 Main St	Jasper	812-482-2712
Dubois Branch Library	5506 E Main St	Dubois	812-678-2548
Ferdinand Branch Library	112 E 16th St	Ferdinand	812-367-1671
Melton Public Library	8496 West College St		812-936-2177
Orleans Town and Township Public Library	174 North Maple St	Orleans	812-865-3270
Spencer County Public Library	210 Walnut St	Rockport	812-649-4866
Lincoln Heritage Public Library	105 Wallace St	Dale	812-937-7170

Table 2: Flier Locations

Mid-States Corridor Flier Locations			
Region	Name	Address	Phone
Grandview	Spencer County Public Library Grandview Branch	403 Main St, Grandview, IN 47615	812-649-9732
	Grandview Town Hall	316 Main St, Grandview, IN 47615	812-649-2573
Rockport	Rockport IGA	509 Main St, Rockport, IN 47635	812-649-2435



Mid-States Corridor Flier Locations			
	Chuckles 16	612 N 5th St, Rockport, IN 47635	812-649-9419
	Rockport City Hall	509 Main St, Rockport, IN 47635	812-649-2435
	Spencer County Public Library	Walnut St &, S 3rd St, Rockport, IN 47635	812-649-4866
Tennyson	Tennyson Post Office	124 S Main St, Tennyson, IN 47637	800-275-8777
	Tennyson Town Hall/Water Dept	112 N Main St, Tennyson, IN 47637	812-567-8816
Dale	Dale Community Center	103 N Wallace St, Dale, IN 47523	812-937-2446
	Lincoln Heritage Public Library	105 N Wallace St, Dale, IN 47523	812-937-7170
	Holiday Foods	550 S Washington St, Dale, IN 47523	812-937-2856
	Dale Town Hall	103 S Wallace St, Dale, IN 47523	812-937-2086
Huntingburg	Mor For Less Grocery	103 N Main St, Huntingburg, IN 47542	812-683-2405
	Huntingburg Elementary School	501 W Sunset Dr, Huntingburg, IN 47542	812-683-1172
	Huntingburg City Hall	508 E 4th St, Huntingburg, IN 47542	812-683-2211
	Huntingburg Post Office	410 N Jackson St, Huntingburg, IN 47542	800-275-8777
Holland	Sunoco Gas Station	402 Main St, Holland, IN 47541	812-536-3421
	Holland Post Office	403 W Main St, Holland, IN 47541	800-275-8777
Jasper	Holiday Foods	847 3rd Ave, Jasper, IN 47546	812-482-4464
	Dollar General Store	4117 Mannheim Rd, Jasper, IN 47546	812-329-2650
	Dollar General Store	671 3rd Ave, Jasper, IN 47546	423-939-9540
	St. Vincent De Paul Store	1320 3rd Ave, Jasper, IN 47546	812-482-3601
	Jasper Memorial Hospital	800 W 9th St, Jasper, IN 47546	812-996-2345
St. Anthony/St. Marks	St. Anthony Community Center	PO Box 34, 4665 S Cross St, St Anthony, IN 47575	812-326-2761
	St. Anthony Post Office	4531 S Cross St, St Anthony, IN 47575	800-275-8777
French Lick / West Baden	French Lick Post Office	8617 W College St, French Lick, IN 47432	800-275-8777
	Jay C Food Store	8276 IN-56, West Baden Springs, IN 47469	812-936-9890
	French Lick Town Hall	7959 W Hunters Run Dr, French Lick, IN 47432	812-936-4737
	West Baden Springs Town Hall	8361 IN-56, West Baden Springs, IN 47469	812-936-7119



Mid-States Corridor Flier Locations			
Washington	Casey's General Store	2009 E National Hwy, Washington, IN 47501	812-254-2301
	Walmart Supercenter	1801 S, IN-57, Washington, IN 47501	812-254-6681
	Mayor's Office	200 Harned Ave, Washington, IN 47501	812-254-5575
	Daviess County Courthouse	200 E Walnut St, Washington, IN 47501	812-254-1091
Odon	Jay C Food Store	309 W Main St, Odon, IN 47562	812-636-0101
	Casey's General Store	101 W Elnora St, Odon, IN 47562	812-636-0333
Loogootee	Ruler Foods	600 W Broadway St, Loogootee, IN 47553	812-295-3030
	IGA	500 W Broadway St, Loogootee, IN 47553	812-295-2949
	Loogootee Post Office	203 NW 1st St, Loogootee, IN 47553	800-275-8777
	City Government Office	401 John F Kennedy Ave, Loogootee, IN 47553	812-295-3200
Dover Hill / Williams	Dover Hill Christian Union Church	15581 IN-450, Shoals, IN 47581	812-388-6832
	Mount Union Church of Christ	14504 Dover Hill Rd, Loogootee, IN 47553	812-247-2317
	Williams Post Office	61 Kern St, Williams, IN 47470	800-275-8777
	White River Bait & Tackle	249 Hendrickson St, Williams, IN 47470	812-388-7362
	Bethel Baptist Church	10637 Williams Rd, Williams, IN 47470	N/A
	Williams Church of Christ	304 Ridge Rd, Williams, IN 47470	812-388-7399
	Williams First Baptist Church	373 Ridge Rd, Williams, IN 47470	812-388-7321
Mitchell	Ruler Foods	1240 W Main St, Mitchell, IN 47446	812-849-3442
	City Government Office	407 S 6th St, Mitchell, IN 47446	812-848-5161
	Mitchell Post Office	118 N 7th St, Mitchell, IN 47446	800-275-8777
Bedford	Walmart Supercenter	3200 John Williams Blvd, Bedford, IN 47421	812-275-0335
	Jay C Food Store	2631 16th St, Bedford, IN 47421	812-275-0725
	Bedford Post Office	1720 H St, Bedford, IN 47421	800-275-8777
	Mayor's Office	1102 16th St, Bedford, IN 47421	812-279-6555
Oolitic	Casey's General Store	113 7th St, Oolitic, IN 47451	812-277-1871
	Dollar General Store	203 Hoosier Ave, Oolitic, IN 47451	812-329-2320



Refined Preferred Alternative P Outreach

This portion of the plan was not in the original Action Plan developed with INDOT and FHWA. It was added in response to comments from community leaders and the public in the Loogootee and Martin County area. On March 1, 2023, the project team announced the addition of three variations in the Loogootee area. The outreach effort to inform the public of the changes included the development of a video that explained the process of adding the variations to increase flexibility as the decision on an alignment is determined in the Tier 2 studies. The video was paired with a press release, updated maps and a flyer that included a QR code to direct people to the materials on the project website. All these items were made available at local libraries along RPA P in order to provide EJ communities with easy accessibility to the materials. A 30-day comment period was provided to collect community feedback on the changes. Comment forms and comment boxes were also available at the local libraries.



**MID-STATES
CORRIDOR**



**MID-STATES
CORRIDOR**

An improved highway connection in southern Indiana

**Decisions about the location of this new road are expected soon.
Learn more and share your opinions here by June 2021.**



MIDSTATESCORRIDOR.COM



812-482-3116



**MID-STATES
CORRIDOR**

Una conexión mejorada de autopista en el sur de Indiana

**Se esperan pronto decisiones sobre la localidad de esta nueva carretera.
Aprenda más y comparta su opinión antes de Junio 2021.**



MIDSTATESCORRIDOR.COM



812-482-3116

